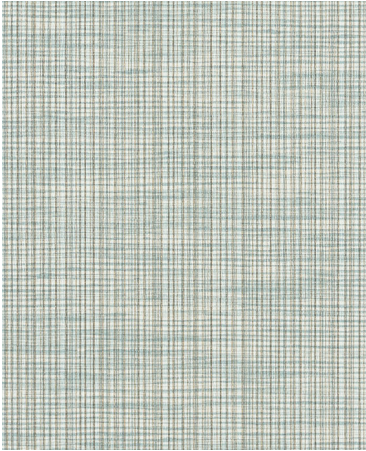


## IL | Vinyl



## CLEANING CODE

CFC: Coated Fabrics Cleaning - When a spill/stain occurs wipe immediately with a clean dry cloth. Carefully remove the majority of the stain then follow the steps below.

Soap & Water - Remove ordinary dirt and smudges with a mild soap and water solution using a soft cloth or towel. Rinse with fresh water and wipe dry.

Non-abrasive Cleaners - If residue remains, use a straight application of the following cleaners: Fantastik or 409 and gently clean with a soft cloth. Rinse with fresh water and wipe dry.

Isopropyl Alcohol - More stubborn stains may be eliminated using a cotton cloth soaked in 70-91% isopropyl (rubbing) alcohol. Wipe without spreading stain to surrounding area. A second application should be applied with vigorous rubbing in a circular motion. For highly textured material, a soft brush is recommended to clean valleys and crevices. Rinse with fresh water and wipe dry.

BC: Bleach Cleanable - 1 parts bleach, 9 parts water = 10% bleach, 90% water solution. Do not clean / disinfect fabric for longer than 10 minutes using the 10% bleach solution. Always rinse promptly with clean water after applying the bleach solution. Failure to do so will void any and all warranties.

Please note: If specific cleaners are not listed, then the pattern has not been tested for cleaning solution compatibility.

## DISINFECTANTS AND CLEANERS

303 FABRIC/VINYL CLEANER – Approved - Slight Effect

A&G BOATWASH & MULTIPURPOSE CLEANER – Approved - Slight Effect

ALL PURPOSE VINYL CLEANER – Approved - Slight Effect

ASEPTICARE TB-II – Approved - Slight Effect

BABE'S BOAT CARE WASH & MULTIPURPOSE CLEANER (6:1 ... – Approved - Slight Effect

BIO-KLEEN AMAZING (BOAT VINYL CLEANER) – Approved - Slight Effect

CAVIWIPES XL – Approved - No Effect

CLOROX HYDROGEN PEROXIDE CLEANER DISINFECTANT SPRA... – Approved - Slight Effect

DISPATCH (1:10 DILUTION) – Approved - Slight Effect  
FANTASTIK ALL PURPOSE CLEANER – Approved - Slight Effect  
FORMULA 409 ALL PURPOSE CLEANER – Approved - Slight Effect  
GLANCE NA (1:50 DILUTION) – Approved - Slight Effect  
GP FORWARD DILUTED (1:64 DILUTION) – Approved - Slight Effect  
LUSTRELL FAUX LEATHER CARE KIT & LUSTRELL REGULAR ... – Approved - Slight Effect  
LYSOL FOAMING – Approved - Slight Effect  
MOLD & MILDEW STAIN REMOVER – Approved - Slight Effect  
SUPER SANI CLOTH GERMICIDAL WIPES (PURPLE LID) – Approved - Slight Effect  
STRIDE FRAGRANCE FREE NEUTRAL CLEANER (1:266 WATE... – Approved - Slight Effect  
SANI CLOTH AF3 GERMICIDAL WIPES (GREY LID) – Approved - Slight Effect  
VINYL SAUCE – Approved - Slight Effect  
VIREX II 256- CONCENTRATE – Approved - Slight Effect  
VIROX 5 RTU (CN PRODUCT) – Approved - Slight Effect  
WEX-CIDE 128 CLEANER – Approved - Slight Effect  
DUCKY ALL PURPOSE CLEANER – Not Approved - Severe Effect  
OXIVIR TB – Not Approved - Severe Effect  
BLEACH (RATIO OF WATER TO BLEACH) See the bleach c... – Approved - No Effect  
OXYCIDE DAILY DISINFECTANT CLEANER – Not Approved - Severe Effect  
OXIVIR TB WIPES – Not Approved - Severe Effect  
PERISEPT 62 SPORICIDAL DISINFECTANT – Approved - No Effect  
3M HB QUAT DISINFECTANT CLEANER CONCENTRATE 25L – Approved - No Effect  
ECOLAB DISINFECTANT 1 WIPE – Approved - No Effect

KEY	DEFINITION
Approved   No Effect	No change in color or surface finish.
Approved   Slight Effect	A change in color or surface finish only visible at certain angles.
Approved   Moderate Effect	A change in color or surface finish visible from all angles and directions, but does not appreciably alter the original condition of the material.
Not Approved   Severe Effect	A change in color or surface finish, which obviously and markedly alters the original condition of the specimen.

The results for the cleaners/disinfectants listed does not imply "approved" or that the results are guaranteed. These evaluations are indicators after laboratory testing and may not be indicative of field performance. Customers should first determine if products are appropriate for use on their surfaces. The majority of today's disinfectant chemistries are mainly designed for use on hard environmental surfaces such as ceramic, porcelain, laminate, steel etc. After each application these types of disinfectants on seating surfaces the surface must be wiped with clean water and dried with a clean towel to remove any chemical residue that could eventually discolor or degrade the material surface.

Failure to follow the above dilution recommendations, directions when using using these types of cleaners/disinfectants or the application of a clean water rinse after each application can expedite a product failure and will void any warranty claim.