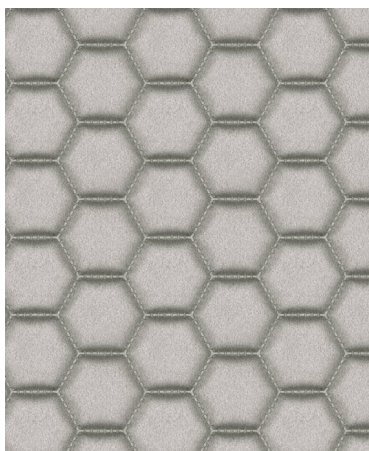


**MU | PVC Free****CLEANING CODE**

**WS:** Water/Solvent Cleaner - Spot clean with a mild solvent, an upholstery shampoo, or the foam from a mild detergent. When using a solvent or dry cleaning product, follow instructions carefully and clean only in a well-ventilated room. Avoid any product that contains carbon tetrachloride or other toxic materials. With either method, pretest a small area before proceeding. Always rinse promptly with clean water.

**CFC:** Coated Fabrics Cleaning - When a spill/stain occurs wipe immediately with a clean dry cloth. Carefully remove the majority of the stain then follow the steps below.

**Soap & Water** - Remove ordinary dirt and smudges with a mild soap and water solution using a soft cloth or towel. Rinse with fresh water and wipe dry.

**Non-abrasive Cleaners** - If residue remains, use a straight application of the following cleaners: Fantastik or 409 and gently clean with a soft cloth. Rinse with fresh water and wipe dry.

**Isopropyl Alcohol** - More stubborn stains may be eliminated using a cotton cloth soaked in 70-91% isopropyl (rubbing) alcohol. Wipe without spreading stain to surrounding area. A second application should be applied with vigorous rubbing in a circular motion. For highly textured material, a soft brush is recommended to clean valleys and crevices. Rinse with fresh water and wipe dry.

**BC:** Bleach Cleanable - 1 parts bleach, 4 parts water = 20% bleach, 80% water solution. Do not clean / disinfect fabric for longer than 10 minutes using the 20% bleach solution. Always rinse promptly with clean water after applying the bleach solution. Failure to do so will void any and all warranties.

Write-Away products from Mayer Fabrics defies unsightly ink spots and paint stains. Take action 'right away' on Write-Away products by following the cleaning instructions for Ink Stains. Always rinse thoroughly with clean water.

Please note: If specific cleaners are not listed, then the pattern has not been tested for cleaning solution compatibility.

**RECOMMENDED CARE AND CLEANING STEPS**

**General Maintenance:**

This polyurethane is inherently stain resistant, it is important to keep it clean at all times to maintain the original look and feel. Spot cleaning with a clean, soft towel with clean water will remove most of the everyday stains.

**Disinfection:**

This product can be disinfected with a 1:4 bleach dilution of water/bleach. Allow the mixture to linger for the time specified by the Center for Disease Control and Prevention.

Rinse all cleaning agents thoroughly with water and wipe with a soft cloth.

Residue left by cleaning agents will degrade and shorten the life and/or affect the product's appearance if not removed.

**DISINFECTANTS AND CLEANERS**

3M HB QUAT DISINFECTANT CONCENTRATE – Approved - No Effect

CAVIWIPES XL – Approved - No Effect

CAVICIDE – Approved - No Effect

CLOROX HEALTHCARE BLEACH GERMICIDAL WIPE – Approved - No Effect

CLOROX HEALTHCARE HYDROGEN PEROXIDE CLEANER DISINF... – Approved - No Effect

FORMULA 409 ALL PURPOSE CLEANER – Approved - No Effect

HYDROGEN PEROXIDE – Approved - No Effect

ISOPROPYL ALCOHOL – Approved - No Effect

LYSOL SPRAY DISINFECTANT – Approved - No Effect

OXIVIR 1 RTU – Approved - No Effect

OXIVIR FIVE 16 – Approved - No Effect

OXIVIR TB WIPES – Approved - No Effect

OXYCIDE DAILY DISINFECTANT CLEANER – Approved - No Effect

PERISEPT 62 SPORICIDAL DISINFECTANT – Approved - No Effect

SANI CLOTH AF3 GERMICIDAL WIPES (GREY LID) – Approved - No Effect

VIREX II 256- CONCENTRATE – Approved - No Effect

VIREX PLUS ONE-STEP DISINFECTANT CLEANER & DEODERI... – Approved - No Effect

VIREX TB- RTU (not for cellulosic & nylon fabrics) – Approved - No Effect

WEX-CIDE 128 CLEANER – Approved - No Effect

3M C DIFF SOLUTION TABLETS – Approved - No Effect

AMPHYL – Approved - No Effect

ECOLAB A-456 II – Approved - No Effect

BLEACH (RATIO OF WATER TO BLEACH) See the bleach c... – Approved - No Effect

OXIVIR TB – Approved - No Effect

KEY	DEFINITION
Approved   No Effect	No change in color or surface finish.
Approved   Slight Effect	A change in color or surface finish only visible at certain angles.
Approved   Moderate Effect	A change in color or surface finish visible from all angles and directions, but does not appreciably alter the original condition of the material.
Not Approved   Severe Effect	A change in color or surface finish, which obviously and markedly alters the original condition of the specimen.

The results for the cleaners/disinfectants listed does not imply "approved" or that the results are guaranteed. These evaluations are indicators after laboratory testing and may not be indicative of field performance. Customers should first determine if products are appropriate for use on their surfaces. The majority of today's disinfectant chemistries are mainly designed for use on hard environmental surfaces such as ceramic, porcelain, laminate, steel etc. After each application these types of disinfectants on seating surfaces the surface must be wiped with clean water and dried with a clean towel to remove any chemical residue that could eventually discolor or degrade the material surface.

Failure to follow the above dilution recommendations, directions when using using these types of cleaners/disinfectants or the application of a clean water rinse after each application can expedite a product failure and will void any warranty claim.