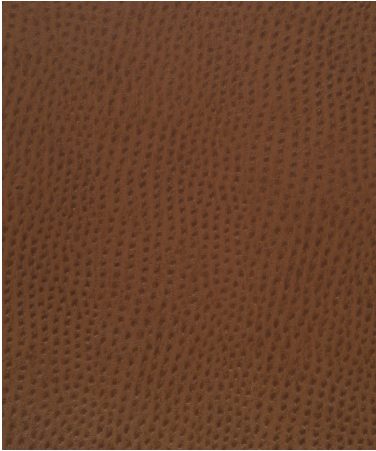


OUT | Faux Leather**CLEANING CODE**

WS: Water/Solvent Cleaner - Spot clean with a mild solvent, an upholstery shampoo, or the foam from a mild detergent. When using a solvent or dry cleaning product, follow instructions carefully and clean only in a well-ventilated room. Avoid any product that contains carbon tetrachloride or other toxic materials. With either method, pretest a small area before proceeding. Always rinse promptly with clean water.

CFC: Coated Fabrics Cleaning - When a spill/stain occurs wipe immediately with a clean dry cloth. Carefully remove the majority of the stain then follow the steps below.

Soap & Water - Remove ordinary dirt and smudges with a mild soap and water solution using a soft cloth or towel. Rinse with fresh water and wipe dry.

Non-abrasive Cleaners - If residue remains, use a straight application of the following cleaners: Fantastik or 409 and gently clean with a soft cloth. Rinse with fresh water and wipe dry.

Isopropyl Alcohol - More stubborn stains may be eliminated using a cotton cloth soaked in 70-91% isopropyl (rubbing) alcohol. Wipe without spreading stain to surrounding area. A second application should be applied with vigorous rubbing in a circular motion. For highly textured material, a soft brush is recommended to clean valleys and crevices. Rinse with fresh water and wipe dry.

BC: Bleach Cleanable - 1 parts bleach, 9 parts water = 10% bleach, 90% water solution. Do not clean / disinfect fabric for longer than 10 minutes using the 10% bleach solution. Always rinse promptly with clean water after applying the bleach solution. Failure to do so will void any and all warranties.

Please note: If specific cleaners are not listed, then the pattern has not been tested for cleaning solution compatibility.

DISINFECTANTS AND CLEANERS

ACCEL PREVENTION CONCENTRATE – Approved - Slight Effect

ACCEL TB – Approved - No Effect

BIREX SE DISINFECTANT – Approved - Slight Effect

CAVIWIPES – Approved - Slight Effect
CITRACE GERMACIDE – Approved - Slight Effect
CLOROX DISINFECTING WIPE – Approved - No Effect
CLOROX HEALTHCARE BLEACH GERMICIDAL WIPE – Approved - Slight Effect
CLOROX HEALTHCARE EZ-KILL QUAT ALCOHOL CLEANER DIS... – Approved - Slight Effect
CLOROX HYDROGEN PEROXIDE CLEANER DISINFECTANT SPRA... – Approved - No Effect
CLOROX HEALTHCARE HYDROGEN PEROXIDE CLEANER DISINF... – Approved - Slight Effect
ECOLAB NEUTRAL DISINFECTANT CLEANER – Approved - No Effect
FADE-A-DYNE II – Approved - Slight Effect
FANTASTIK ALL PURPOSE CLEANER – Approved - No Effect
FORMULA 409 ALL PURPOSE CLEANER – Approved - Slight Effect
GREEN WORKS ALL PURPOSE CLEANER – Approved - No Effect
ISOPROPYL ALCOHOL – Approved - No Effect
LYSOL FOAMING – Approved - No Effect
LYSOL SPRAY DISINFECTANT – Approved - No Effect
OASIS 146 MULTI-QUAT SANITIZER – Approved - No Effect
OASIS 144 QUAT SANITIZER – Approved - No Effect
OPTIM 33 TB DISINFECTANT (ALTERNATE FOR ACCEL TB) – Approved - Slight Effect
OXIVIR TB – Approved - No Effect
OXYCIDE DAILY DISINFECTANT CLEANER – Approved - No Effect
PERISEPT 62 SPORICIDAL DISINFECTANT – Approved - No Effect
PURELL FOOD SERVICE SANITIZER – Approved - No Effect
SUPER SANI CLOTH GERMICIDAL WIPES (PURPLE LID) – Approved - Slight Effect
SANI CLOTH HB GERMICIDAL WIPES (GREEN LID) – Approved - No Effect
SANI-PROFESSIONAL MULTI SURFACE WIPES – Approved - Slight Effect
SANI-PROFESSIONAL TABLE TURNERS WIPES – Approved - No Effect
SANIZIDE PLUS SURFACE DISINFECTANT SPRAY – Approved - Slight Effect
SIMPLE GREEN (1:10 DILUTION) – Approved - Slight Effect
SANI CLOTH AF3 GERMICIDAL WIPES (GREY LID) – Approved - No Effect
VIREX II 256- CONCENTRATE – Approved - No Effect
VIROX AHP 5 DISINFECTANT CLEANER SURFACE WIPES – Approved - No Effect
VIROX 5 CONCENTRATE (1:256 DILUTION; CN PRODUCT) – Approved - No Effect
VIROX 5 RTU (CN PRODUCT) – Approved - Slight Effect
ASEPTICARE TB-II – Not Approved - Severe Effect
CAVICIDE – Not Approved - Severe Effect
CLOROX BROAD SPECTRUM QUATERNARY DISINFECTANT CLEA... – Not Approved - Severe Effect
SANI CLOTH PLUS GERMICIDAL WIPES (RED LID) – Not Approved - Severe Effect
SANI CLOTH BLEACH GERMICIDAL WIPES (ORANGE LID) – Not Approved - Severe Effect
WEX-CIDE 128 CLEANER – Not Approved - Severe Effect
BLEACH (RATIO OF WATER TO BLEACH) See the bleach c... – Approved - No Effect
SUPER HDQ L 10 – Approved - No Effect
OXIVIR FIVE 16 – Approved - No Effect
OXIVIR TB WIPES – Approved - No Effect
VIREX PLUS ONE-STEP DISINFECTANT CLEANER & DEODERI... – Approved - No Effect

EVACLEAN PURTABS 500ppm – Approved - No Effect

SIMPLE GREEN TOWELS – Approved - No Effect

MAXIM FACILITY + ONE-STEP DISINFECTANT CLEANER AND... – Approved - No Effect

SANI CLOTH PRIME GERMICIDAL WIPES (FUCHSIA LID) – Approved - No Effect

3M HB QUAT DISINFECTANT CLEANER CONCENTRATE 25L – Approved - No Effect

OXIVIR 1 WIPES – Approved - No Effect

SPARTAN BNC-15 – Approved - No Effect

KEY	DEFINITION
Approved No Effect	No change in color or surface finish.
Approved Slight Effect	A change in color or surface finish only visible at certain angles.
Approved Moderate Effect	A change in color or surface finish visible from all angles and directions, but does not appreciably alter the original condition of the material.
Not Approved Severe Effect	A change in color or surface finish, which obviously and markedly alters the original condition of the specimen.

The results for the cleaners/disinfectants listed does not imply "approved" or that the results are guaranteed. These evaluations are indicators after laboratory testing and may not be indicative of field performance. Customers should first determine if products are appropriate for use on their surfaces. The majority of today's disinfectant chemistries are mainly designed for use on hard environmental surfaces such as ceramic, porcelain, laminate, steel etc. After each application these types of disinfectants on seating surfaces the surface must be wiped with clean water and dried with a clean towel to remove any chemical residue that could eventually discolor or degrade the material surface.

Failure to follow the above dilution recommendations, directions when using using these types of cleaners/disinfectants or the application of a clean water rinse after each application can expedite a product failure and will void any warranty claim.