



WC706-017  
Limestone



WC706-007  
Oatmeal



WC706-027  
Pumice



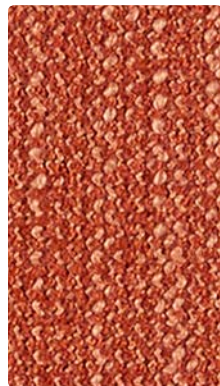
WC706-016  
Metal



WC706-006  
Iron



WC706-002  
Citrus



WC706-009  
Persimmon



WC706-008  
Port



WC706-005  
Plum



WC706-003  
Spring



WC706-024  
Sea



WC706-014  
Ocean



WC706-004  
Midnight



**Application**  
Upholstery Seating

**Content**  
100% Polyester

**Width**  
54 inches / 137 cm

**Abrasion** (Wyzenbeek/Cotton Duck)  
Exceeds 100,000 Double Rubs

**Finish**  
Crypton® with Antimicrobial Silver Ion Technology

**Reduced Environmental Impact**  
GREENGUARD Gold Certified



**TECHNICAL INFORMATION**

Content: 100% Polyester

Width: 54 inches / 137 cm

Backing: Crypton®

Approx. Repeat: None

Weight: 22.76 oz./linear yard / 705.64 g/lm

Finish: Crypton® with Antimicrobial Silver Ion Technology

Directional: Yes

Railroaded: No

**PERFORMANCE**

Surface Abrasion: Heavy Duty ASTM D4157  
(Wyzenbeek/Cotton Duck)

Pilling Resistance ASTM D3511

Colorfastness to Crocking AATCC 8

Colorfastness to Light AATCC 16

**Results**

Exceeds 100,000 Double Rubs

Class 3

Dry: Grade 4 min / Wet: Grade 4 min

Grade 4 at 40 hours

**FLAMMABILITY**

California Technical Bulletin 117-2013

NFPA 260 / UFAC Class 1

May comply with California Technical Bulletin 133 when combined with appropriate components.

**REDUCED ENVIRONMENTAL IMPACT**

This product is GREENGUARD Gold Certified for low chemical and particle emissions to UL standard UL 2818 and may contribute to LEED certification. For complete information visit [mayerfabrics.com](http://mayerfabrics.com) and [UL.com/gg](http://UL.com/gg).

**CLEANING INFORMATION**

C: Crypton Cleaning

BC: Bleach Cleanable – 1 part bleach, 9 parts water = 10% bleach, 90% water solution. Do not clean/disinfect fabric for longer than 10 minutes using the 10% bleach solution. Always rinse promptly with clean water after applying the bleach solution. Failure to do so will void any and all warranties.

**ADDITIONAL INFORMATION**

**Custom Capabilities:** All patterns can be custom colored. Minimum yardage applies.

**Digital Swatch Card Color Matching:** Due to color variations on different monitors and color printers, actual swatch colors may vary slightly. Please request a memo sample from Mayer Fabrics to ensure proper color representation.

**Specifications:** Specifications are correct at the time of printing. Current specifications are available on our website.



This fabric meets or exceeds these ACT performance guidelines.  
\*Certification Marks owned by ACT®



**MAYER**FABRICS