

162-002 **Caramel**



162-009 **Mesa**



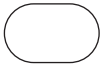
162-027 **Taupe**



162-017 **Sand**



162-003 **Patina**



Application
Panel

Content
100% Recycled Polyester

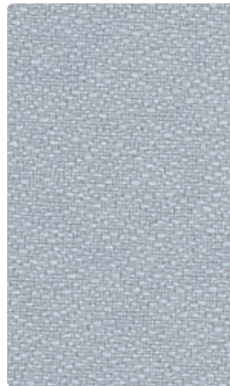
Width
66 inches

Finish
None

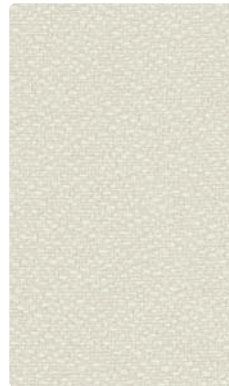
Reduced Environmental Impact
Recycled Content



162-010 **Earth**



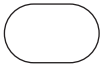
162-014 **Blue Mist**



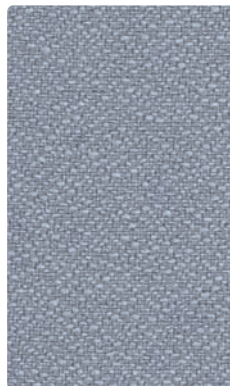
162-007 **Parchment**



162-026 **Fog**



162-000 **Pumice**



162-004 **Denim**



162-016 **Shadow**



162-006 **Ebony**

TECHNICAL INFORMATION

Content: **100% Recycled Polyester**
(65% Pre-/35% Post-Consumer)
 Width: 66"
 Weight: 7.8 oz./linear yard

Backing: None
 Finish: None
 Cleaning Code: WS

Visual Repeat: None
 Directional: No
 Railroaded: No

PERFORMANCE (*ACT* Registered Certification Marks)

Test Method	Results
Breaking Strength: ✂*	ASTM-D-5034 Warp 266 lbs / Fill 244 lbs
Seam Slippage: ✂*	ASTM-D-434 Warp 55 lbs/Fill 59 lbs
Colorfastness to Crocking: ●*	AATCC-8 Dry: Class 4 min / Wet: Class 4 min
Colorfastness to Light: ☀*	AATCC-16E Class 4 min at 40 hours

Class in the colorfastness requirements is based on a numerical scale of 5 for negligible or no color transfer to 1 for very severe color change or color transfer.

FLAMMABILITY 🔥*

ASTM E84 (Unadhered) Class 1 or A
 California Technical Bulletin 117, Section E

Passes
 Passes

REDUCED ENVIRONMENTAL IMPACT

Recycled Content



GREENGUARD Indoor Air Quality Certification requires products to meet some of the world's toughest chemical emissions standards. GREENGUARD Children & Schools Certification requires those products to meet or exceed additional criteria, including CA Section 01350, to account for the unique health sensitivities of children.



CLEANING INFORMATION

WS: Water/Solvent Cleaner – Spot clean, with a mild solvent, an upholstery shampoo, or the foam from a mild detergent. When using a solvent or dry cleaning product, follow instructions carefully and clean only in a well-ventilated room. Avoid any product that contains carbon tetrachloride or other toxic materials. With either method, pretest a small area before proceeding.

ADDITIONAL INFORMATION

Custom Capabilities: All patterns can be custom colored. Minimum yardage applies.

Memo Samples: Please keep this card intact. Individual memo samples can be ordered on our website or by contacting customer service.

Color Matching: Mayer Fabrics always attempts to ship a satisfactory commercial match. Because of industry standard dye lot variation, colors may not match exactly.

Specifications: Specifications are correct at the time of printing. Current specifications are available on our website.

For information or assistance with products or services, call us at 800.428.4415 or refer to our website, www.mayerfabrics.com.



This 100% polyester panel fabric is included in the Underwriters Laboratory Fabric Recognition Program. Additional testing of this U.L. recognized component fabric is not required on approved panels from participating manufacturers.



MAYERFABRICS

GSA-Contract # GS-28F-0022P