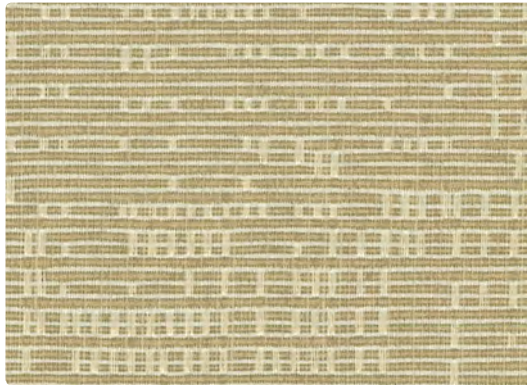


168-007 Alabaster



168-017 Stone



168-002 Chamois



168-000 Taupe



Application
Panel/Wall/Acoustic

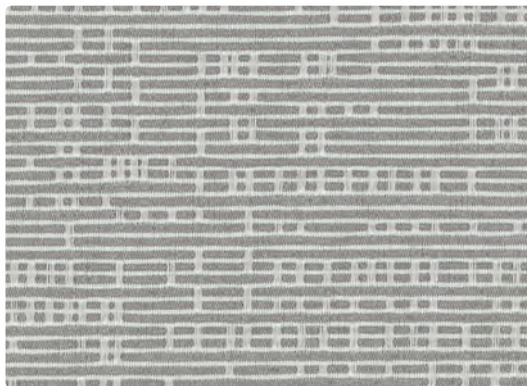
Content
100% Recycled Polyester

Width
66 inches / 168 cm

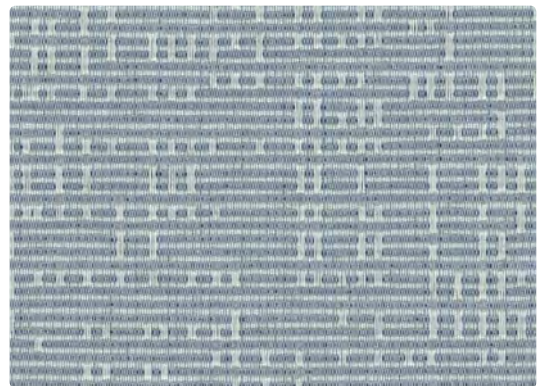
Finish
None

Reduced Environmental Impact
GREENGUARD Gold Certified

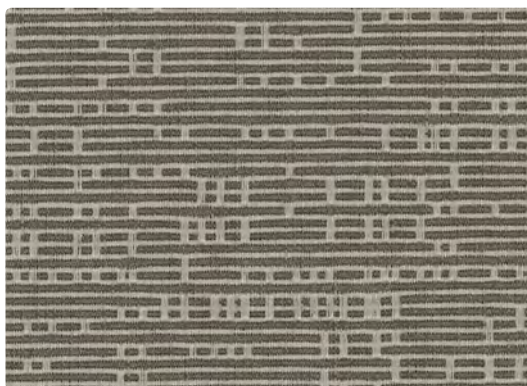
Eco System®
Sustainable. Attainable at Mayer Fabrics.



168-006 Pewter



168-004 Dusk



168-016 Flint



168-003 Spring



TECHNICAL INFORMATION

Content: **100% Recycled Polyester (65% Pre-/35% Post-Consumer)**

Width: 66" / 168 cm

Weight: 10.368 oz./linear yard / 321.44 g/lm

Backing: Acrylic

Finish: None

Approx. Repeat: 8.5 in/21.59 cm H, 33.103 in/84.08 cm V Non-Matching

Directional: Yes

Railroaded: No

PERFORMANCE

Colorfastness to Crocking AATCC 8

Results

Dry: Grade 4 min / Wet: Grade 3 min

Colorfastness to Light AATCC 16

Grade 4 min at 40 hours

FLAMMABILITY

ASTM E84 (Unadhered) Class 1 or A

California Technical Bulletin 117-2013

NFPA 260/UFAC Class 1

REDUCED ENVIRONMENTAL IMPACT

This product is **GREENGUARD Gold Certified** for low chemical and particle emissions to UL standard UL 2818 and may contribute to LEED certification. For complete information visit mayerfabrics.com and UL.com/gg.



CLEANING INFORMATION

WS: Water/Solvent Cleaner

BC: Bleach Cleanable – 1 part bleach, 9 parts water = 10% bleach, 90% water solution. Do not clean/disinfect fabric for longer than 10 minutes using the 10% bleach solution. Always rinse promptly with clean water after applying the bleach solution. Failure to do so will void any and all warranties.

ADDITIONAL INFORMATION

Custom Capabilities: All patterns can be custom colored. Minimum yardage applies.

Digital Swatch Card Color Matching: Due to color variations on different monitors and color printers, actual swatch colors may vary slightly. Please request a memo sample from Mayer Fabrics to ensure proper color representation.

Specifications: Specifications are correct at the time of printing. Current specifications are available on our website.



This fabric meets or exceeds these ACT performance guidelines.
*Certification Marks owned by ACT®

 This 100% polyester fabric is included in the Underwriter's Laboratory Fabric Recognition Program. Additional testing of this U.L. recognized component is not required on approved panels from participating manufacturers.

