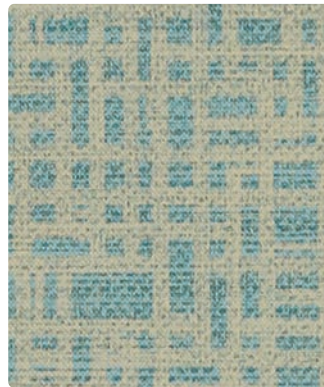


CH-001 Paprika



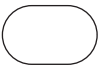
CH-007 Alabaster



CH-024 Aqua



CH-002 Caramel



**Application**  
Seating

**Content**  
100% Vinyl

**Width**  
54 inches

**Abrasion**  
Passes 1,300,000 Double Rubs

**Finish**  
PreFixx®

**Reduced Environmental Impact**  
GREENGUARD Certified



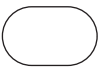
CH-013 Key Lime



CH-014 Cerulean



CH-010 Taupe



CH-003 Hedge



CH-004 Sapphire






CH-000 Bark

## TECHNICAL INFORMATION

Content: 100% Vinyl Width: 54" Weight: 28 oz./linear yard	Backing: Polyester Knit Finish: PreFixx® Cleanability: WS, BC	Approx. Repeat: 17" H, 17" V Random Match Directional: Yes Railroaded: No
---	---	---

## PERFORMANCE (\*Certification Marks owned by ACT\*)

Test Method	Results
Surface Abrasion: Heavy Duty  *	ASTM D-4157 (Cotton Duck) Passes 1,300,000 Double Rubs
Breaking Strength: ✂ *	CFFA-17 Warp 85 lbs/Fill 75 lbs
Colorfastness to Crocking:  *	AATCC-8 Dry: Class 4 min / Wet: Class 3 min
Colorfastness to Light:  *	CFFA-2 650 Hours
Cold Crack:	CFFA-6a -20° F

## FLAMMABILITY \*

California Technical Bulletin 117-2013	Passes	Fed. Spec. A-A-2950 (supercedes CCC-A-680A)	Passes
NFPA 260/UFAC Class 1	Passes	FMVSS 302	Passes
Boston Fire Dept. Code (BFD IX-1)	Passes	NFPA 701 (small scale)	Passes
FAA/FAR 25.853(a) & Appd F Part 1(a)(ii)	Passes	NY & NJ Port Authority	Passes

Should comply with California Technical Bulletin 133 when combined with appropriate components.

## REDUCED ENVIRONMENTAL IMPACT

This product is GREENGUARD Certified for low chemical and particle emissions to UL standard UL 2818 and may contribute to LEED certification. For complete information visit [mayerfabrics.com](http://mayerfabrics.com) and [UL.com/gg](http://UL.com/gg).

## SPECIFIC TREATMENTS

**PreFixx®** Protective Finish Anti-Microbial/Anti-Bacterial Protection Anti-Stain Finish/Easily Cleaned Anti-Static Slip Finish Urine Stain Resistant  
Mildew Resistant Superior Disinfectant Resistance Oil Resistant Sulfide Stain Resistant/All Colors UV Stabilized Pigments

**PreFixx®** The first protective finish that starts where other finishes finish. With PreFixx protection, it is possible to remove stains that could never be removed before. Now, with cost-proven stain resistance and cleanability, plus superior abrasion resistance, PreFixx protected vinyls protect you from high maintenance and frequent reupholstery costs.

## CARE AND CLEANING INFORMATION

**WS:** Water/Solvent Cleaner – Spot clean, with a mild solvent, an upholstery shampoo, or the foam from a mild detergent. When using a solvent or dry cleaning product, follow instructions carefully and clean only in a well-ventilated room. Avoid any product that contains carbon tetrachloride or other toxic materials. With either method, pretest a small area before proceeding.

**Normal Care and Cleaning:** Remove ordinary dirt and smudges with a mild soap and water solution and a clean, soft cloth or towel. Dry with a soft, lint-free cloth or towel. **CAUTION:** The use of vinyl "conditioners" or "protectants" is not recommended and should be avoided on vinyl upholstery treated with PreFixx® protective finish.

**Disinfecting:** Upholstery with PreFixx® protective finish can be disinfected with a diluted household bleach (sodium hypochlorite) solution (1:10 bleach to water ratio). Rinse with fresh water. Dry with a clean towel.

### Special Cleaning Problems

Although upholstery treated with PreFixx® protective finish is resistant to most common stains, the dyes and pigments in some staining agents have the ability to create a permanent stain if not treated properly. To clean difficult stains from upholstery treated with PreFixx® protective finish, locate the staining agent in the lists below and follow its recommended cleaning method. For best results, treat all stains immediately.

**Cleaning Tip:** To determine the method and type of cleaners, the source of the stain should be identified.

**Staining Agents:** Baby oil, ketchup, chocolate, motor oil, olive oil, grape juice, urine, blood, hair oil tonic, tea, coffee and betadine. Use Method 1

**Staining Agents:** Eye shadow, crayon and grease. Use Method 1. If stains remain, use Method 2.

**Staining Agents:** Tobacco tar (nicotine), permanent felt tip marker, yellow mustard, lipstick, ballpoint pen and spray paint. Use Method 1. If stains remain, use Method 2. For stubborn stains still remaining, use Method 3.

The recommended cleaners used in Cleaning Methods 1, 2, and 3 are progressively more aggressive. Often it is better to begin with the least aggressive cleaner, and move to the next strongest only if the stain remains. NEVER EXCEED a staining agent's recommended cleaner or cleaning method, however.

**Method 1:** Use Formula 409® All-Purpose Spray Cleaner or Fantastik® Spray Cleaner with a soft cloth or damp sponge. Rinse area with fresh water then dry with a clean, lint-free cloth.

**Method 2:** Use a solvent-type cleaner\*, such as rubbing (isopropyl) alcohol 91%. Rinse cleaned area with fresh water then dry with a clean, lint-free cloth.

**Method 3:** Use a strong, active solvent cleaner\* diluted in water (70% water/30% solvent cleaner) such as nail polish remover (acetone/water). Clean with a soft cloth or damp sponge. Stain should be removed with less than six (6) rubs. If the stain persists after six rubs, the stain has set and probably cannot be removed. Rinse cleaned area with fresh water, then dry with a clean, lint-free cloth.

\*CAUTION: Some solvents are highly flammable. Exercise proper care in cleaning and notify personnel in area of danger. Wear rubber gloves during all cleaning activities. Use caution in cleaning around buttons, stitching and wooden or decorative trim, since these solvents could seriously damage such areas.

FORMULA 409 is a registered trademark of the Chlorox Company

FANTASTIK is a registered trademark of Dow Chemical Products Inc.

## ADDITIONAL INFORMATION

**Custom Capabilities:** All patterns can be custom colored. Minimum yardage applies.

**Memo Samples:** Please keep this card intact. Individual memo samples can be ordered on our website or by contacting customer service.

**Fabric Color Matching:** Mayer Fabrics always attempts to ship a satisfactory commercial match. Because of industry standard dye lot variation, colors may not match exactly.

**Digital Swatch Card Color Matching:** Due to color variations on different monitors and color printers, actual swatch colors may vary slightly. Please request a memo sample from Mayer Fabrics to ensure proper color representation.

**Specifications:** Specifications are correct at the time of printing. Current specifications are available on our website.

**For information or assistance with products or services, call us at 800.428.4415 or refer to our website, [www.mayerfabrics.com](http://www.mayerfabrics.com).**



**MAYERFABRICS**

GSA Contract # GS-28F-0022P

