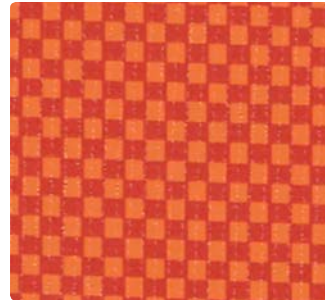


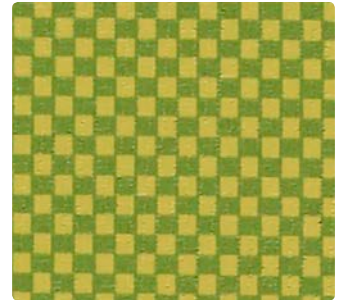
CQ-017 Silver



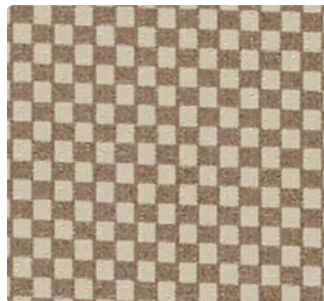
CQ-007 Almond



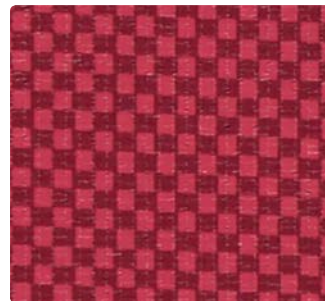
CQ-009 Orange Peel



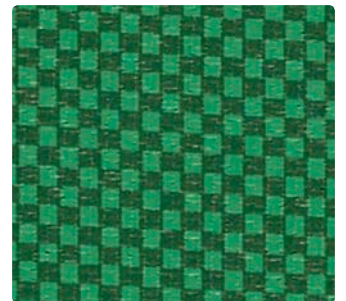
CQ-013 Pistachio



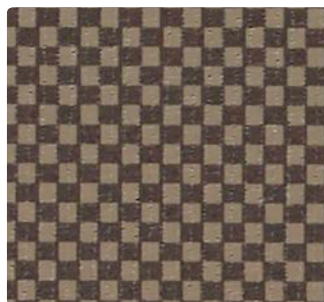
CQ-000 Café



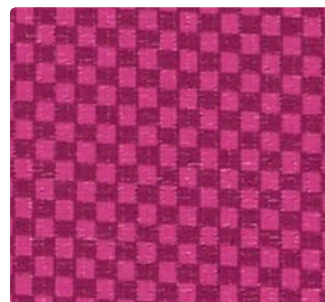
CQ-001 Cardinal



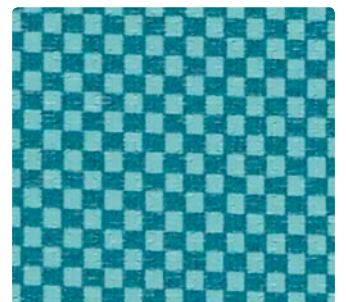
CQ-003 Shamrock



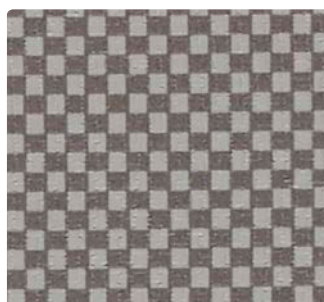
CQ-010 Cocoa



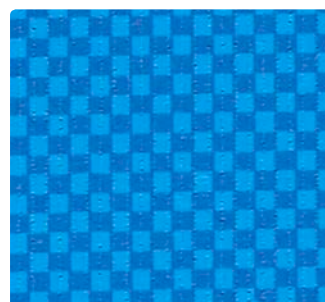
CQ-005 Mulberry



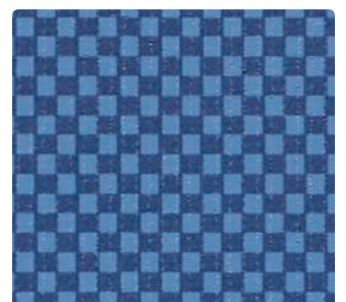
CQ-024 Ocean



CQ-006 Metal



CQ-014 Cobalt



CQ-004 Navy



Application
Upholstery Seating

Content
60% Polyurethane Polycarbonate
- **PVC FREE** face,
40% Polyester backing

Width
54 inches / 137 cm

Abrasion (Wyzenbeek/Cotton Duck)
Exceeds 100,000 Double Rubs

Finish
Soil and Stain Resistant Top Coat
with Ink Resistant Technology

Reduced Environmental Impact
GREENGUARD Certified
REACH and **RoHS** Compliant
PVC Free



TECHNICAL INFORMATION

Content: 60% Polyurethane Polycarbonate - **PVC FREE** face,
40% Polyester backing

Weight: 24.5 oz./linear yard / 759.58 g/lm

Width: 54 inches / 137 cm

Finish: Soil and Stain Resistant Top Coat with Ink Resistant Technology

Approx. Repeat: 0.25 in/0.64 cm H, 0.2 in/0.51 cm V

Directional: Yes

Railroaded: No

PERFORMANCE

Surface Abrasion: Heavy Duty ASTM D4157
(Wyzenbeek/Cotton Duck)

Results

Exceeds 100,000 Double Rubs

Colorfastness to Crocking AATCC 8

Dry: Grade 4 / Wet: Grade 4

Colorfastness to Light AATCC16 Option 3

Grade 4 at 200 hours

Hydrolysis Resistance ISO1419 (Tropical Test Method C)

10 weeks - no cracking, peeling or delamination

FLAMMABILITY

California Technical Bulletin 117-2013

NFPA 260 / UFAC Class 1

May comply with California Technical Bulletin 133 when combined with appropriate components.

REDUCED ENVIRONMENTAL IMPACT

This product is **GREENGUARD Certified for low chemical and particle emissions to UL standard UL 2818 and may contribute to LEED certification.** For complete information visit mayerfabrics.com and UL.com/gg.

REACH (Registration, Evaluation, Authorization and Restrictions of Chemicals) Compliant

RoHS (Restriction of Hazardous Substances) Compliant

PVC Free

CLEANING INFORMATION

W: Water-Based Cleaner

BC: Bleach Cleanable – 1 part bleach, 9 parts water = 10% bleach, 90% water solution. **Do not clean/disinfect fabric for longer than 10 minutes using the 10% bleach solution. Always rinse promptly with clean water after applying the bleach solution. Failure to do so will void any and all warranties.**

CFC: Coated Fabrics Cleaning – Refer to Mayer website for complete cleaning info.

DYE TRANSFER DISCLAIMER

Certain clothing and accessory dyes (such as those used on denim jeans) may migrate to lighter colors. This phenomenon is increased by humidity and temperature and is irreversible. Mayer Fabrics will not assume responsibility for dye transfer caused by external contaminants. Please check compatibility when using this product in combination with painted or varnished surfaces.

ADDITIONAL INFORMATION

Custom Capabilities: All patterns can be custom colored. Minimum yardage applies.

Digital Swatch Card Color Matching: Due to color variations on different monitors and color printers, actual swatch colors may vary slightly. Please request a memo sample from Mayer Fabrics to ensure proper color representation.

Specifications: Specifications are correct at the time of printing. Current specifications are available on our website.



This fabric meets or exceeds these ACT performance guidelines.
*Certification Marks owned by ACT®



MAYERFABRICS