

Application

Seating

Raw Material Content

Domestic Full Grain Leather, Chrome-Free (Vegetable Tanned)

Hide Size

50-55 Sq. Ft.

Abrasion

ASTM D 7255 - CS10 Wheel Taber, 1,000 cycles with 1,000 gram weight, Exceeds Heavy Duty

Finish

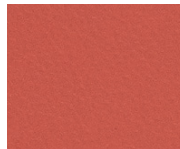
Semi-aniline, solvent free, also available **Powered by Crypton**

Reduced Environmental Impact

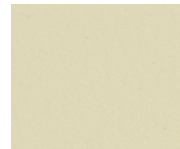
Chrome-Free (Vegetable Tanned); Domestic Leather; Biodegradable; No PCP's or CFC's in the Tanning Process; Low VOC



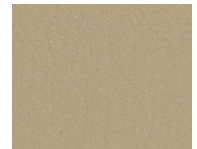
LCH-001
Crimson



LCH-019
Tangelo



LCH-007
Tapioca



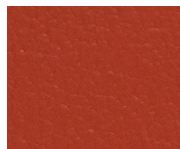
LCH-027
Clove



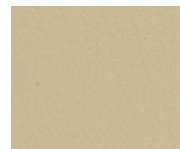
LCH-002
Sunbeam



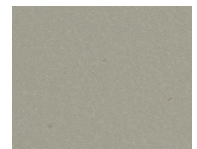
LCH-023
Sea Glass



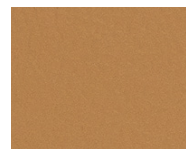
LCH-009
Red Pepper



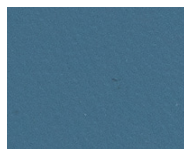
LCH-017
Almond



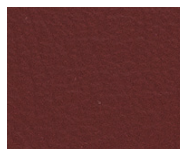
LCH-036
Stone



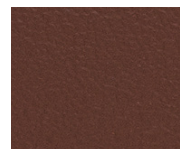
LCH-012
Butterscotch



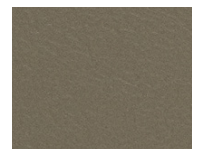
LCH-024
Como



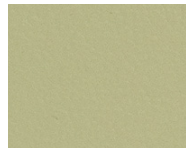
LCH-011
Chili



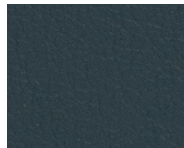
LCH-020
Cordovan



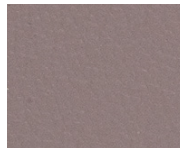
LCH-026
Seal



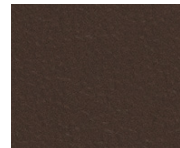
LCH-013
Spring



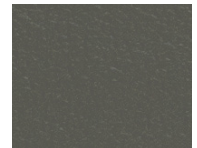
LCH-014
Atlantic



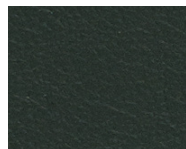
LCH-005
Haze



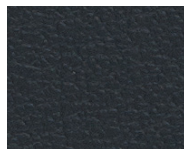
LCH-010
Chocolate



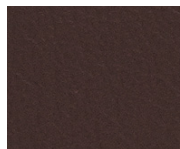
LCH-016
Thunder



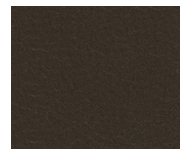
LCH-003
Laurel



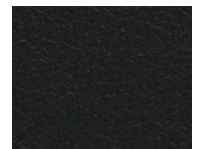
LCH-004
Navy



LCH-008
Burgundy



LCH-000
Sable



LCH-006
Black

TECHNICAL AND PERFORMANCE INFORMATION

Raw Material Content:	Domestic Full Grain Leather, Chrome-Free (Vegetable Tanned)		
Finish:	Semi-aniline, solvent free, also available Powered by Crypton		
Hide Size:	50-55 sq. ft.		
Weight:	2.5-3 oz. / sq. ft.		
Thickness:	FT MS 311-1011.1 - 1.0-1.2 MM		
Abrasion Resistance:	ASTM D 7255 - CS10 Wheel Taber, 1,000 cycles with 1,000 gram weight, Exceeds Heavy Duty		
Blocking:	FT MS 311-312.1 - Separate with ease and no finish damage		
Elongation:	FT MS 311-2031 - 40% max. at 100 lbs		
Grab Strength:	FT MS 311-2031 - 100 lbs. min.		
Stitch Tear:	FT MS 311-2151 - 15 lbs. min. (double hole)		
Flexibility:	ASTM D2097 - 60,000 cycles		
Colorfastness to Light:	AATCC 16 Xenon, 72 hour exposure - Class 4 min.		
Dry / Wet Crocking:	AATCC 8 - Class 4 min. / AATCC 8 - Class 4 min.		
Flammability:	California Technical Bulletin #117 NFPA 260 Boston Fire Code Can be treated to pass IMO A.652(16) 8.3 and FAR 25.853 (FAA spec), please specify Can comply with California Technical Bulletin 133 when combined with appropriate components	Passes Passes Passes	FMVSS 302 (Automotive) IMO A.652 (16) 8.2 NY/NJ Port Authority Passes Passes Passes

REDUCED ENVIRONMENTAL IMPACT

Domestic Leather, Chrome-Free (Vegetable Tanned) **Biodegradable** **No PCP's or CFC's In The Tanning Process, Lead Free** **Low VOC**

CARE AND CLEANING INFORMATION

Genuine leather requires the least care of all upholstery materials. Dusting with a clean dry cloth is the recommended routine cleaning method. For spots and spills, wipe excess liquid immediately and let air dry. If necessary, use lukewarm water with mild non-detergent soap, work into a thin lather with a soft cloth, rinse with clean water and buff to restore lustre.

ADDITIONAL INFORMATION

Custom Capabilities: Custom colors are available with a 10-hide minimum. The **Powered by Crypton** option is available with a one-hide minimum. Please consult your Mayer representative on cost and lead-time.

Fire Codes: For compliance with more stringent fire codes, please consult Mayer Fabrics.

Memo Samples: Please keep this card intact. Individual memo samples can be ordered on our web site or by contacting customer service.

Color Matching: Mayer Fabrics always attempts to ship a satisfactory commercial match. Because of industry standard dye lot variation, colors may not match exactly.

Specifications: Specifications are correct at the time of printing. Current specifications are available on our web site.

For information or assistance with products or services, call us at 800.428.4415 or refer to our web site, www.mayerfabrics.com.



BIODEGRADABLE



LOW VOC



GSA Contract #GS-28F-0022P