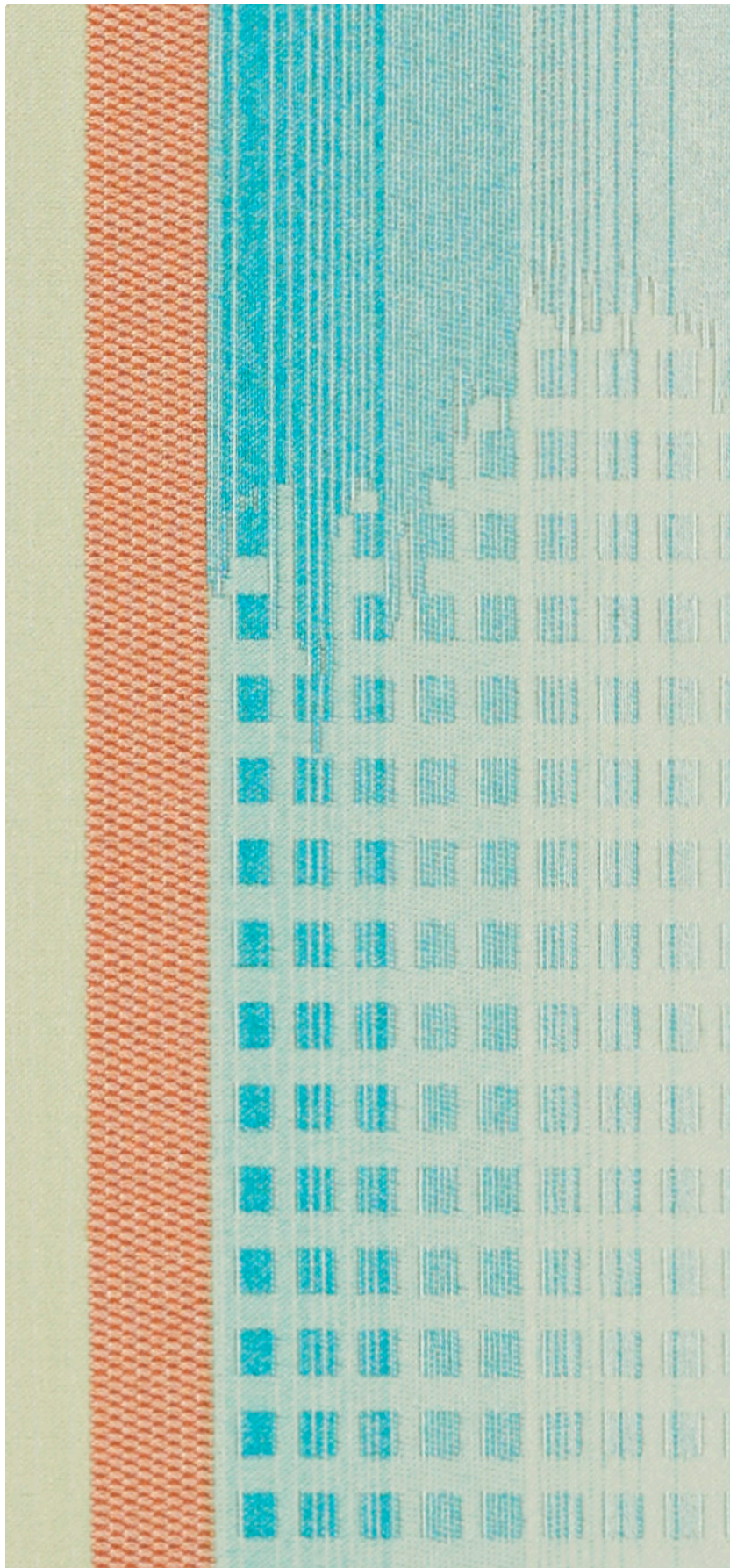


Cityscape
PC12-003
South Beach



Application
Privacy Curtain/Multi-Purpose

Content
58% Recycled Polyester,
42% FR Polyester

Width
72.75 inches

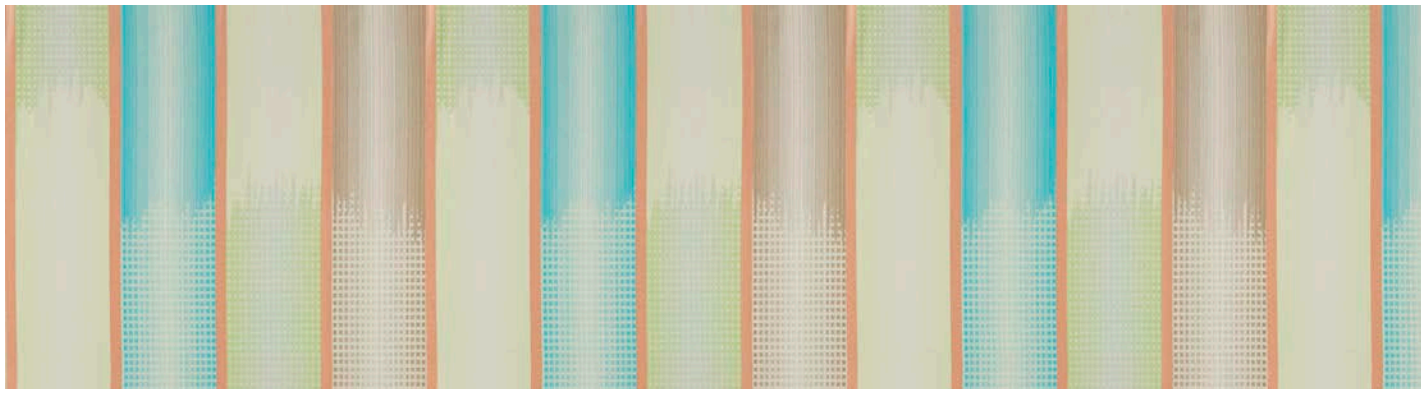
Finish
None

Reduced Environmental Impact
GREENGUARD Gold Certified

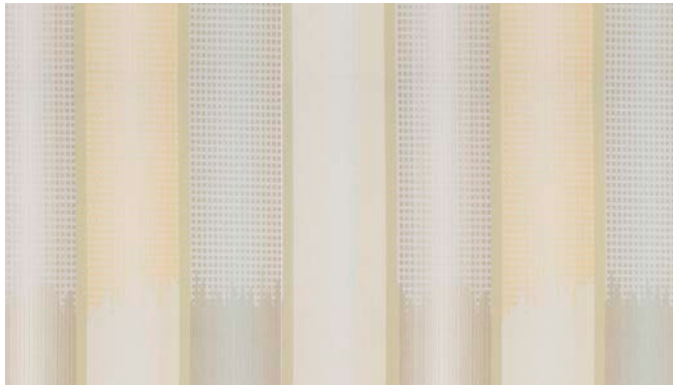


Please note that this pattern is shown railroaded, which means it will NOT need to be seamed when fabricated.

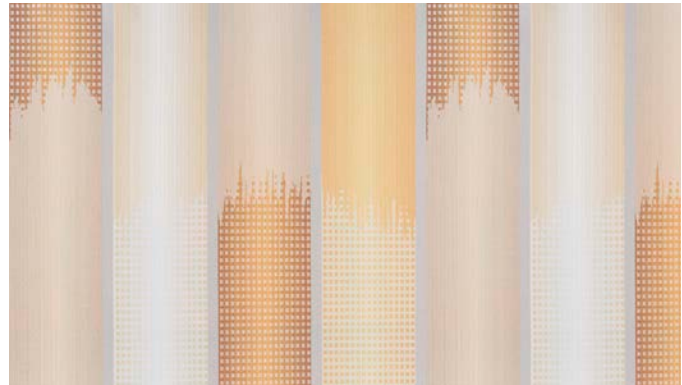
Repeat: 28.5" H, 72.75" V



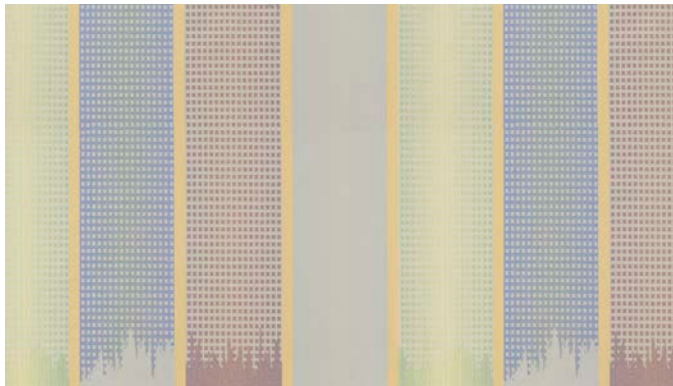
PC12-003 South Beach



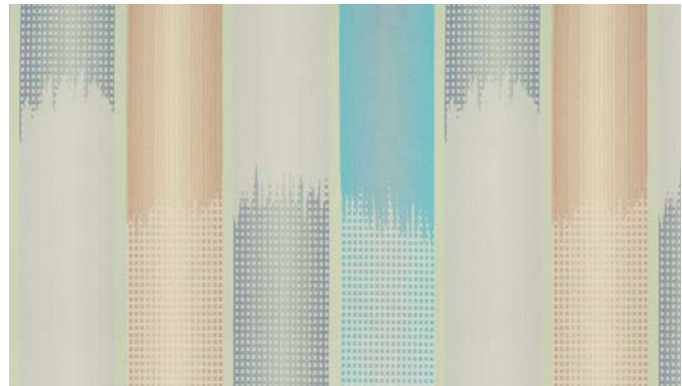
PC12-006 Cloudy Day



PC12-009 Autumn Sunset



PC12-005 Lavender Surprise



PC12-004 Blue Lagoon



WIDTH 72.75"

CONTENT 58% Recycled Polyester (29% Post-/29% Pre-Consumer), 42% FR Polyester

FINISH None

REPEAT 28.5" H, 72.75" V

SHOWN RAILROADED: Yes

FLAMMABILITY NFPA 701 Test Method 1, Cal 117-2013, NFPA 260/UFAC Class 1

LAUNDER Machine wash to 160° F, tumble dry at 140° F, remove immediately.

THIS FABRIC MEETS OR EXCEEDS ACT PERFORMANCE GUIDELINES.

☆ ♻️ 🔥 Certification Marks owned by ACT®

CUSTOM COLORS AVAILABLE

REDUCED ENVIRONMENTAL IMPACT
GREENGUARD Gold Certified

Due to color variations on different monitors and color printers, actual swatch colors may vary slightly. Please request a memo sample from Mayer Fabrics to ensure proper color representation.

GSA Contract #GS-28F-0022P



PC12CD  40615

☎ 317.267.2626 or 800.428.4415 📠 317.267.2629 or 877.7SAMPLE

www.mayerfabrics.com
©2015 Mayer-Paetz, Inc.