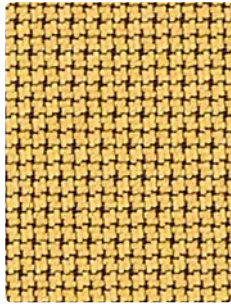


Upholstery

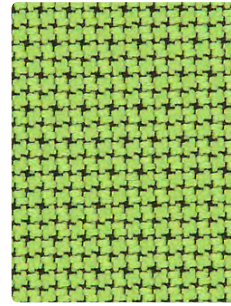
CROSS CHECK



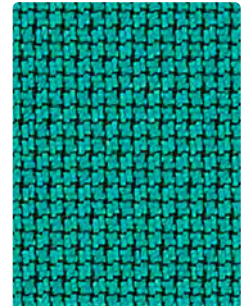
299-002
Sunshine



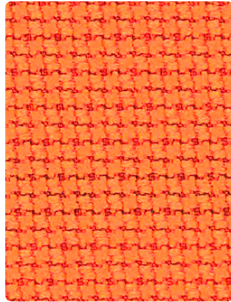
299-027
Stone



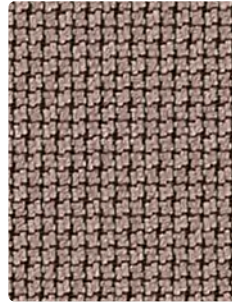
299-003
Lime



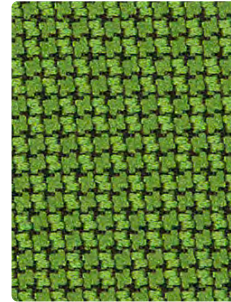
299-053
Peacock



299-009
Paradise



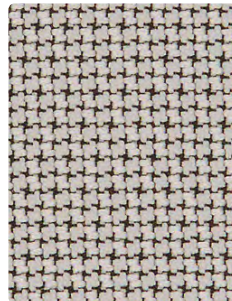
299-020
Taupe



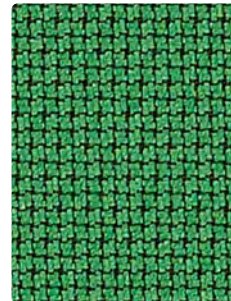
299-033
Evergreen



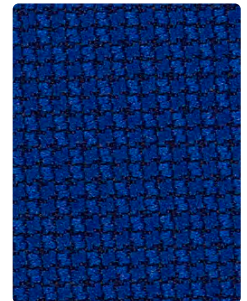
299-021
Red Baron



299-036
Dove



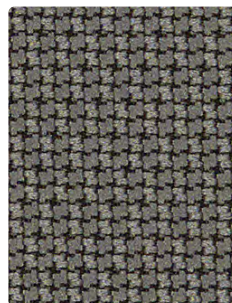
299-043
Bottle



299-024
Blue Ribbon



299-011
Vermillion



299-026
Platinum



299-037
Biscuit



299-054
Marine



299-015
Plumberry



299-006
Slate Black



299-000
Otter



299-014
Imperial

Upholstery
100% Polyester
54 inches / 137 cm
Passes 258,000 Double Rubs
Stain Repellent
GREENGUARD Gold Certified

CROSS CHECK

TECHNICAL INFORMATION

Application: Multi-use for upholstery, panels, wrapped walls, and acoustic

Content: 100% Polyester

Backing: Acrylic

Weight: 10.71 oz./linear yard / 332.05 g/lm

Width: 54 inches / 137 cm

Finish: Stain Repellent

Approx. Repeat: Non-Matching

Directional: No

Shown Railroaded: No

PERFORMANCE

Abrasion: Passes 258,000 Double Rubs
(Wyzenbeek/Cotton Duck)

Abrasion test results exceeding ACT Performance Guidelines are not an indicator of product lifespan. Multiple factors affect durability and appearance retention.

Crocking: Dry: Grade 4 min / Wet: Grade 3

Colorfastness to Light: Grade 4.5 at 40 hours

FLAMMABILITY

California Technical Bulletin 117-2013

NFPA 260/UFAC Class 1

ASTM E84 (Unadhered) Class 2 or B

REDUCED ENVIRONMENTAL IMPACT

This product is GREENGUARD Gold Certified for low chemical and particle emissions to UL standard UL 2818 and may contribute to LEED certification. For complete information visit mayerfabrics.com.

CLEANING INFORMATION

S: Solvent Cleaner

DYE TRANSFER DISCLAIMER

Certain clothing and accessory dyes (such as those used on denim jeans) may migrate to lighter colors. This phenomenon is increased by humidity and temperature and is irreversible. Mayer Fabrics will not assume responsibility for dye transfer caused by external contaminants. Please check compatibility when using this product in combination with painted or varnished surfaces.

ADDITIONAL INFORMATION

Custom Colors: All patterns can be custom colored. Minimum yardage applies.
Warranty: Please refer to the Mayer website for warranty information by pattern.
Digital Swatch Card Color Matching: Due to color variations on different monitors and color printers, actual swatch colors may vary slightly. Please request a memo sample from Mayer Fabrics to ensure proper color representation.
Complete and current product information available at mayerfabrics.com.



Water and Stain
Repellent Finish



This 100% polyester fabric is included in the Underwriter's Laboratory Fabric Recognition Program. Additional testing of this U.L. recognized component is not required on approved panels from participating manufacturers.



 **MAYERFABRICS**



299-2CD ©2006 MF1121

T 800.428.4415 mayerfabrics.com
500 S. Kitley Ave. Indianapolis, IN 46219