



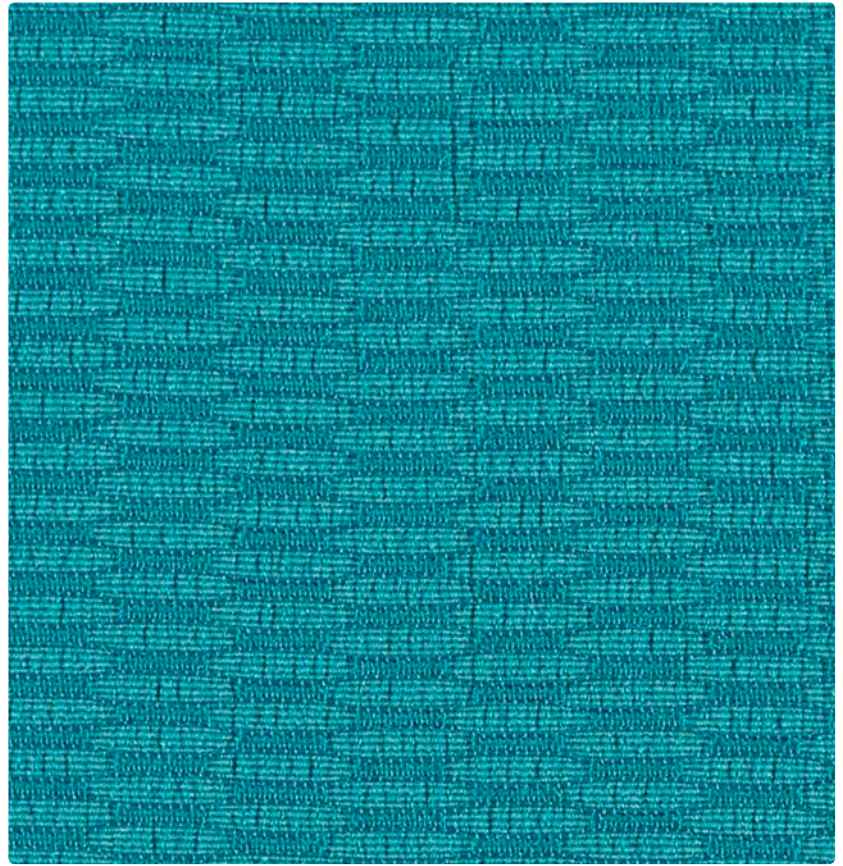
388-007 Abalone



388-017 French Beige



388-000 Sable



388-034 Turquoise



**Application**  
Multi-purpose for upholstery,  
panels and wrapped walls

**Content**  
96% Recycled Polyester,  
4% Polyester

**Width**  
54 inches / 137 cm

**Abrasion** (Wyzenbeek/Cotton Duck)  
Passes 70,000 Double Rubs

**Finish**  
None

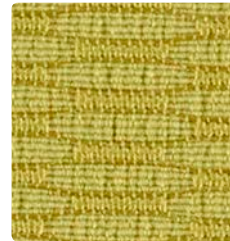
**Reduced Environmental Impact**  
GREENGUARD Gold Certified



388-010 Smokey Taupe



388-009 Blaze



388-002 Chrome Yellow



388-024 Skylight



388-016 Greystone



388-001 Vermillion



388-013 Apple Green



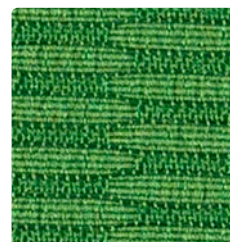
388-014 Cerulean



388-006 Ebony



388-005 Aubergine



388-003 Kelly Green



388-004 Cobalt



**TECHNICAL INFORMATION**Content: **96% Recycled Polyester (82% Post-/14% Pre-Consumer)**, 4% Polyester

Width: 54 inches / 137 cm

Weight: 14.83 oz./linear yard / 459.78 g/lm

Backing: None

Finish: None

Approx. Repeat: 0.8125 in/2.06 cm H, 0.25 in/0.64 cm V

Directional: Yes

Railroaded: No

**PERFORMANCE**Surface Abrasion: Heavy Duty ASTM D4157  
(Wyzenbeek/Cotton Duck)**Results**

Passes 70,000 Double Rubs

Pilling Resistance ASTM D3511

Class 4

Colorfastness to Crocking AATCC 8

Dry: Grade 4 min / Wet: Grade 4 min

Colorfastness to Light AATCC 16

Grade 4.5 at 60 hours

**FLAMMABILITY**

California Technical Bulletin 117-2013

NFPA 260/UFAC Class 1

ASTM E84 (Unadhered) Class 1 or A

May comply with California Technical Bulletin 133 when combined with appropriate components.

**REDUCED ENVIRONMENTAL IMPACT****This product is GREENGUARD Gold Certified for low chemical and particle emissions to UL standard UL 2818 and may contribute to LEED certification. For complete information visit [mayerfabrics.com](http://mayerfabrics.com) and [UL.com/gg](http://UL.com/gg).**

The Facts icon indicates that a textile has been evaluated based on the requirements of the multi-attribute sustainability standard NSF/ANSI 336 through an independent third-party certification body authorized by the Association for Contract Textiles.

**CLEANING INFORMATION**

WS: Water/Solvent Cleaner

**DYE TRANSFER DISCLAIMER**

Certain clothing and accessory dyes (such as those used on denim jeans) may migrate to lighter colors. This phenomenon is increased by humidity and temperature and is irreversible. Mayer Fabrics will not assume responsibility for dye transfer caused by external contaminants. Please check compatibility when using this product in combination with painted or varnished surfaces.

**ADDITIONAL INFORMATION****Custom Capabilities:** All patterns can be custom colored. Minimum yardage applies.**Digital Swatch Card Color Matching:** Due to color variations on different monitors and color printers, actual swatch colors may vary slightly. Please request a memo sample from Mayer Fabrics to ensure proper color representation.**Specifications:** Specifications are correct at the time of printing. Current specifications are available on our website.

This fabric meets or exceeds these ACT performance guidelines.  
\*Certification Marks owned by ACT®

**MAYERFABRICS**