

# ELEVATION

---

Upholstery Seating



**MAYER**FABRICS



**Application**  
Upholstery Seating

**Content**  
100% Recycled Polyester

**Width**  
54 inches / 137 cm

**Abrasion** (Wyzenbeek/Cotton Duck)  
Passes 80,000 Double Rubs

**Finish**  
Stain Repellent - PFOA and  
PFOS Free

**Reduced Environmental Impact**  
GREENGUARD Gold Certified

 **Eco-System**<sup>®</sup>  
Sustainable. Attainable at Mayer Fabrics.



451-013  
Spring



451-007  
Granite



451-014  
Sky



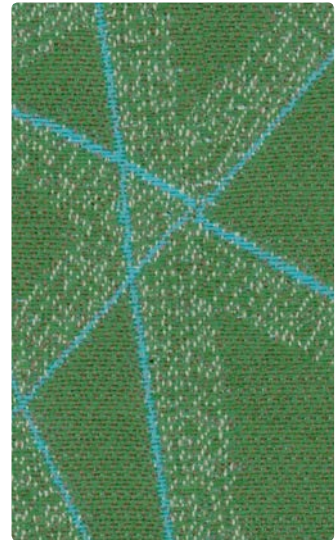
451-013  
Spring



451-002  
Caramel



451-011  
Cranberry



451-003  
Spearmint



451-006  
Storm



451-001  
Ruby



451-004  
Indigo

## TECHNICAL INFORMATION

Content: **100% Post-Consumer Recycled Polyester**

Width: 54 inches / 137 cm

Backing: Acrylic

Approx. Repeat: 14.25 in/36.20 cm H, 13.25 in/33.66 cm V Non-Matching

Weight: 15.8 oz./linear yard / 489.85 g/lm

Finish: Stain Repellent - **PFOA and PFOS Free**

Directional: Yes

Railroaded: No

## PERFORMANCE

Surface Abrasion: Heavy Duty ASTM D4157  
(Wyzenbeek/Cotton Duck)

Pilling Resistance ASTM D3511

Colorfastness to Crocking AATCC 8

Colorfastness to Light AATCC 16 Option 3

## Results

Passes 80,000 Double Rubs

Class 4 min

Dry: Grade 4 min / Wet: Grade 3 min

Grade 4 min at 40 hours

## FLAMMABILITY

California Technical Bulletin 117-2013

NFPA 260/UFAC Class 1

May comply with California Technical Bulletin 133 when combined with appropriate components.

## REDUCED ENVIRONMENTAL IMPACT

This product is **GREENGUARD Gold Certified** for low chemical and particle emissions to **UL standard UL 2818** and may contribute to **LEED** certification. For complete information visit [mayerfabrics.com](http://mayerfabrics.com) and [UL.com/gg](http://UL.com/gg).



## CLEANING INFORMATION

WS: Water/Solvent Cleaner

BC: Bleach Cleanable – 1 part bleach, 9 parts water = 10% bleach, 90% water solution. **Do not clean/disinfect fabric for longer than 10 minutes using the 10% bleach solution. Always rinse promptly with clean water after applying the bleach solution. Failure to do so will void any and all warranties.**

## DYE TRANSFER DISCLAIMER

Certain clothing and accessory dyes (such as those used on denim jeans) may migrate to lighter colors. This phenomenon is increased by humidity and temperature and is irreversible. Mayer Fabrics will not assume responsibility for dye transfer caused by external contaminants. Please check compatibility when using this product in combination with painted or varnished surfaces.

## ADDITIONAL INFORMATION

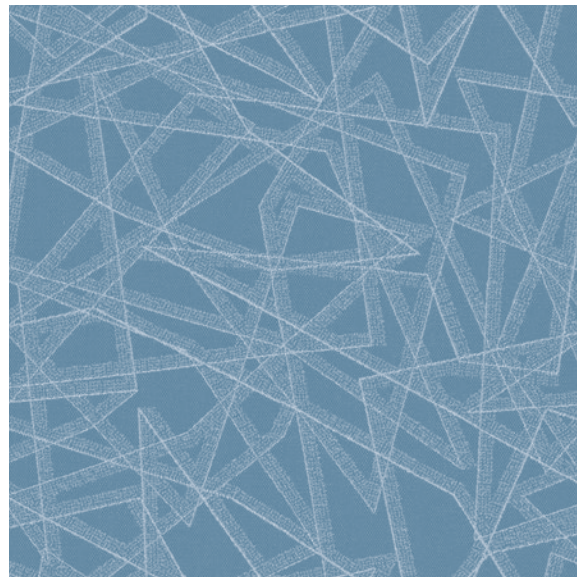
**Custom Capabilities:** All patterns can be custom colored. Minimum yardage applies.

**Digital Swatch Card Color Matching:** Due to color variations on different monitors and color printers, actual swatch colors may vary slightly. Please request a memo sample from Mayer Fabrics to ensure proper color representation.

**Specifications:** Specifications are correct at the time of printing. Current specifications are available on our website.



This fabric meets or exceeds these ACT performance guidelines.  
\*Certification Marks owned by ACT\*



ELEVATION –  
Approx. Repeat: 14.25 in/36.20 cm H, 13.25 in/33.66 cm V Non-Matching

