



623-007
Stone



623-002
Topaz



623-024
Lake



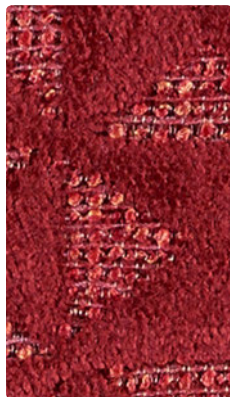
623-000
Mocha



623-009
Spice



623-016
Metal



623-001
Garnet



623-003
Laurel



623-023
Citron



623-006
Onyx



623-004
Indigo



623-014
Ink



623-013
Aegean

Application
Upholstery Seating

Content
61% Polyester, 30% Acrylic,
9% Viscose

Width
54 inches

Abrasion (Wyzenbeek/Cotton Duck)
Passes 145,000 Double Rubs

Finish
Stain Repellent – PFOA Free

Reduced Environmental Impact
GREENGUARD Gold Certified
OEKO-TEX® Certified

TECHNICAL INFORMATION

Content: 61% Polyester, 30% Acrylic, 9% Viscose

Width: 54"

Backing: Acrylic

Approx. Repeat: 14.17" H, 11.81" V Random Match

Weight: 25.08 oz./linear yard

Finish: Stain Repellent – PFOA Free

Directional: Yes

Railroaded: No

PERFORMANCESurface Abrasion: Heavy Duty ASTM D 4157
(Wyzenbeek/Cotton Duck)

Pilling Resistance ASTM D 3511

Colorfastness to Crocking AATCC 8

Colorfastness to Light AATCC 16 Option 3

ResultsPasses 145,000 Double Rubs
appearance retention, including end-user application and proper maintenance. Wyzenbeek results above 100,000 double rubs have not been shown to be a reliable indicator of increased fabric lifespan.

Class 4

Dry: Class 4 min / Wet: Class 4 min

Class 4.5 at 40 hours

FLAMMABILITY

California Technical Bulletin 117-2013

NFPA 260/UFAC Class 1

May comply with California Technical Bulletin 133 when combined with appropriate components.

REDUCED ENVIRONMENTAL IMPACT**This product is GREENGUARD Gold Certified for low chemical and particle emissions to UL standard UL 2818 and may contribute to LEED certification. For complete information visit mayerfabrics.com and UL.com/gg.****OEKO-TEX® Certified****CLEANING INFORMATION**

WS: Water/Solvent Cleaner

ADDITIONAL INFORMATION**Custom Capabilities:** All patterns can be custom colored. Minimum yardage applies.**Digital Swatch Card Color Matching:** Due to color variations on different monitors and color printers, actual swatch colors may vary slightly. Please request a memo sample from Mayer Fabrics to ensure proper color representation.**Specifications:** Specifications are correct at the time of printing. Current specifications are available on our website.This fabric meets or exceeds these ACT performance guidelines.
*Certification Marks owned by ACT®**MAYERFABRICS**