

# Coated Fabric

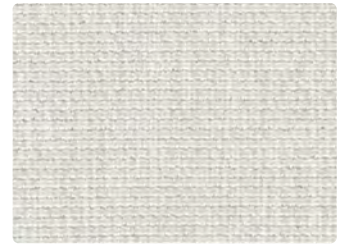
# ESSENCE



ES-002  
Sunray



ES-013  
Citron



ES-026  
Pearl



ES-009  
Persimmon



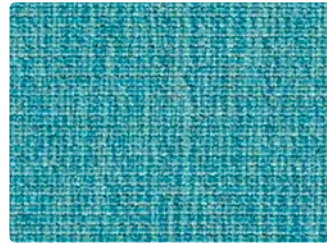
ES-003  
Hedge



ES-007  
Bone



ES-011  
Tomato



ES-023  
Sea



ES-017  
Stone



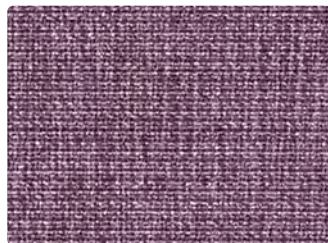
ES-001  
Port



ES-033  
Peacock



ES-016  
Metal



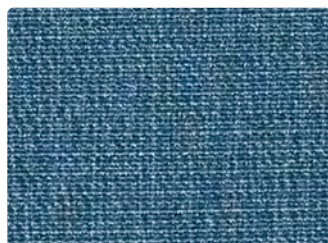
ES-005  
Plum



ES-014  
Indigo



ES-006  
Charcoal



ES-004  
Ink



ES-000  
Cocoa



ES-010  
Truffle

Upholstery  
80% Vinyl - Phthalate Free face,  
20% Polyester backing  
54 inches / 137 cm  
Exceeds 250,000 Double Rubs  
Soil & Stain Resistant Top Coat with  
Ink Resistant Technology  
GREENGUARD Certified

# ESSENCE

---

## TECHNICAL INFORMATION

Application: Upholstery

Content: 80% Vinyl - Phthalate Free face, 20% Polyester backing

Weight: 30 oz./linear yard / 930.10 g/lm

Width: 54 inches / 137 cm

Finish: Soil & Stain Resistant Top Coat with Ink Resistant Technology

Approx. Repeat: None

Directional: Yes

Shown Railroaded: No

---

## PERFORMANCE

Abrasion: Exceeds 250,000 Double Rubs  
(Wyzenbeek/Cotton Duck)

Abrasion test results exceeding ACT Performance Guidelines are not an indicator of product lifespan. Multiple factors affect durability and appearance retention.

Crocking: Dry: Grade 4 min / Wet: Grade 4 min

Colorfastness to Light: Grade 5 at 200 hours

---

## FLAMMABILITY

California Technical Bulletin 117-2013  
NFPA 260/UFAC Class 1

---

## REDUCED ENVIRONMENTAL IMPACT

This product is GREENGUARD Certified for low chemical and particle emissions to UL standard UL 2818 and may contribute to LEED certification. For complete information visit [mayerfabrics.com](http://mayerfabrics.com).

No FR Additives    No Antimicrobial/Antibacterial Additives

---

## CLEANING INFORMATION

WS: Water/Solvent Cleaner

BC: Bleach Cleanable –

1 part bleach, 9 parts water = 10% bleach, 90% water solution.

CFC: Coated Fabrics Cleaning – Refer to Mayer website for complete cleaning info.

---

## DYE TRANSFER DISCLAIMER

Certain clothing and accessory dyes (such as those used on denim jeans) may migrate to lighter colors. This phenomenon is increased by humidity and temperature and is irreversible. Mayer Fabrics will not assume responsibility for dye transfer caused by external contaminants. Please check compatibility when using this product in combination with painted or varnished surfaces.

---

## ADDITIONAL INFORMATION

Custom Colors: All patterns can be custom colored. Minimum yardage applies.

Warranty: Please refer to the Mayer website for warranty information by pattern.

Digital Swatch Card Color Matching: Due to color variations on different monitors and color printers, actual swatch colors may vary slightly. Please request a memo sample from Mayer Fabrics to ensure proper color representation.

Complete and current product information available at [mayerfabrics.com](http://mayerfabrics.com).

---



 **MAYERFABRICS**



ESCD ©2017 MF1021

T 800.428.4415    [mayerfabrics.com](http://mayerfabrics.com)  
500 S. Kitley Ave. Indianapolis, IN 46219