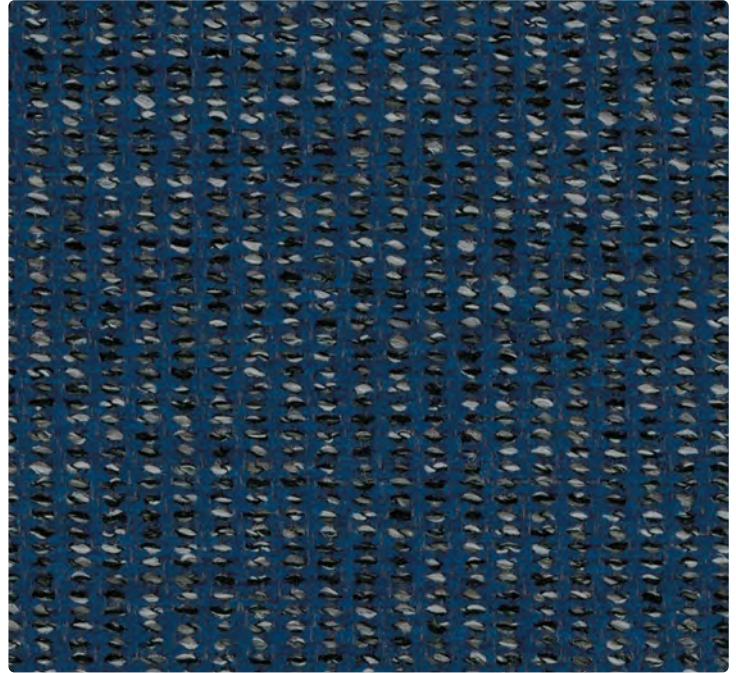




458-007
Creme



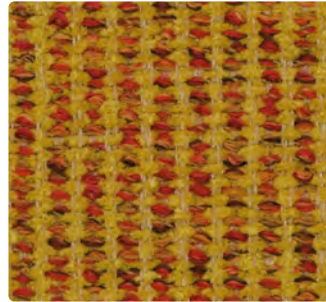
458-017
Aluminum



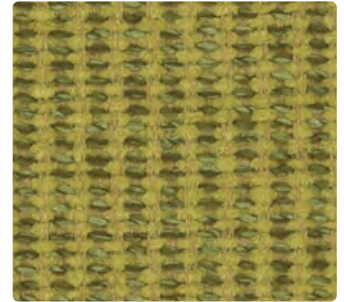
458-004
Marine



458-006
Storm



458-002
Goldenrod



458-003
Loden



458-016
Charcoal



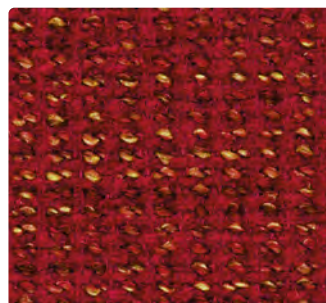
458-009
Cinnamon



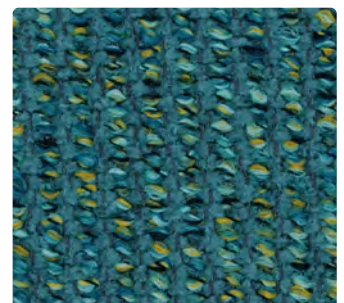
458-013
Evergreen



458-005
Plum



458-001
Wine



458-014
Grotto

Upholstery

61% Polyester, 39% Olefin

54 inches / 137 cm

Passes 60,000 Double Rubs

Nano-Stain Repellent -
PFOA & PFOS Free

GREENGUARD Gold Certified

FIJI

TECHNICAL INFORMATION

Application: Upholstery

Content: 61% Polyester, 39% Olefin

Backing: Acrylic

Weight: 17.184 oz./linear yard / 532.76 g/lm

Width: 54 inches / 137 cm

Finish: Nano-Stain Repellent - PFOA & PFOS Free

Approx. Repeat: 0.906 in/2.3 cm H, 0.406 in/1.03 cm V Non-Matching

Directional: Yes

Shown Railroaded: No

PERFORMANCE

Abrasion: Passes 60,000 Double Rubs
(Wyzenbeek/Cotton Duck)

Abrasion test results exceeding ACT Performance Guidelines are not an indicator of product lifespan. Multiple factors affect durability and appearance retention.

Crocking: Dry: Grade 4 min / Wet: Grade 3 min

Colorfastness to Light: Grade 4 min at 40 hours

FLAMMABILITY

California Technical Bulletin 117-2013
NFPA 260/UFAC Class 1

REDUCED ENVIRONMENTAL IMPACT

This product is GREENGUARD Gold Certified for low chemical and particle emissions to UL standard UL 2818 and may contribute to LEED certification. For complete information visit mayerfabrics.com.

CLEANING INFORMATION

WS: Water/Solvent Cleaner

BC: Bleach Cleanable –

1 part bleach, 9 parts water = 10% bleach, 90% water solution.

DYE TRANSFER DISCLAIMER

Certain clothing and accessory dyes (such as those used on denim jeans) may migrate to lighter colors. This phenomenon is increased by humidity and temperature and is irreversible. Mayer Fabrics will not assume responsibility for dye transfer caused by external contaminants. Please check compatibility when using this product in combination with painted or varnished surfaces.

ADDITIONAL INFORMATION

Custom Colors: All patterns can be custom colored. Minimum yardage applies.

Warranty: Please refer to the Mayer website for warranty information by pattern.

Digital Swatch Card Color Matching: Due to color variations on different monitors and color printers, actual swatch colors may vary slightly. Please request a memo sample from Mayer Fabrics to ensure proper color representation.

Complete and current product information available at mayerfabrics.com.



 **MAYER FABRICS**



458CD ©2019 MF1121

T 800.428.4415 mayerfabrics.com
500 S. Kitley Ave. Indianapolis, IN 46219