



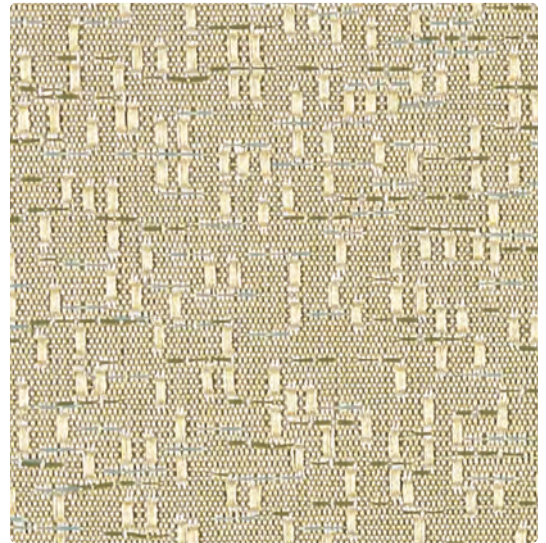
166-007
Quartz



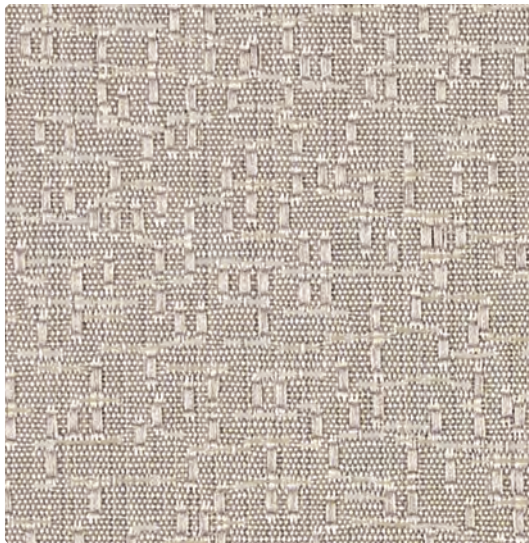
166-002
Straw



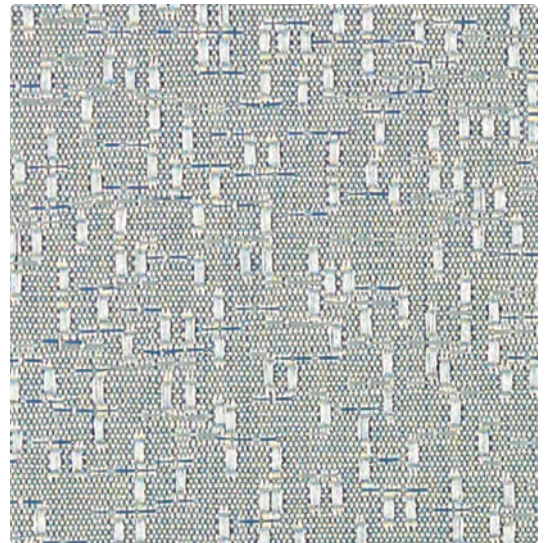
166-017
Sand



166-003
Pistachio



166-006
Zinc



166-004
Sky

Application
Panel/Wall

Content
100% Recycled Polyester

Width
66 inches

Finish
None

Reduced Environmental Impact
GREENGUARD Gold Certified

 Eco System®
Sustainable. Attainable at Mayer Fabrics.

TECHNICAL INFORMATIONContent: **100% Recycled Polyester (65% Pre-/35% Post-Consumer)**

Width: 66"

Weight: 10.208 oz./linear yard

Backing: None

Finish: None

Approx. Repeat: 8.25" H, 0" V Non-Matching

Directional: Yes

Railroaded: No

PERFORMANCE

Colorfastness to Crocking AATCC-8

Results
Dry: Class 4 min / Wet: Class 3 min

Colorfastness to Light AATCC-16

Class 4 min at 40 hours

FLAMMABILITY

ASTM E84 (Unadhered) Class 1 or A

California Technical Bulletin 117-2013

NFPA 260/UFAC Class 1

REDUCED ENVIRONMENTAL IMPACT

This product is **GREENGUARD Gold Certified** for low chemical and particle emissions to **UL standard UL 2818** and may contribute to **LEED certification**. For complete information visit mayerfabrics.com and UL.com/gg.



The Eco System icon indicates 100% recycled content.

CLEANING INFORMATION

WS: Water/Solvent Cleaner

BC: Bleach Cleanable – 1 part bleach, 9 parts water = 10% bleach, 90% water solution. Do not clean/disinfect fabric for longer than 10 minutes using the 10% bleach solution. Always rinse promptly with clean water after applying the bleach solution. Failure to do so will void any and all warranties.

ADDITIONAL INFORMATION

Custom Capabilities: All patterns can be custom colored. Minimum yardage applies.

Digital Swatch Card Color Matching: Due to color variations on different monitors and color printers, actual swatch colors may vary slightly. Please request a memo sample from Mayer Fabrics to ensure proper color representation.

Specifications: Specifications are correct at the time of printing. Current specifications are available on our website.



This fabric meets or exceeds these ACT performance guidelines.
Certification Marks owned by ACT



This 100% polyester fabric is included in the Underwriter's Laboratory Fabric Recognition Program. Additional testing of this U.L. recognized component is not required on approved panels from participating manufacturers.

