

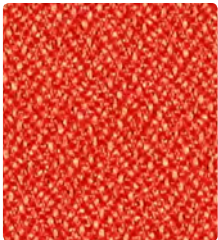
298-012  
Sunray



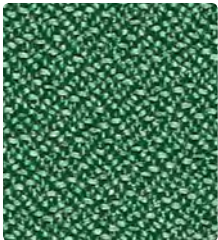
298-013  
Avocado



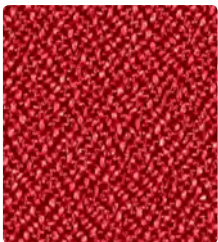
298-053  
Grass



298-009  
Pimento



298-043  
Hedge



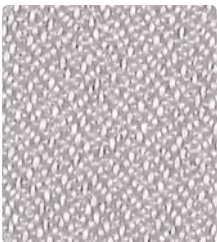
298-001  
Rouge



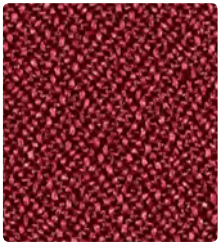
298-033  
Fairway



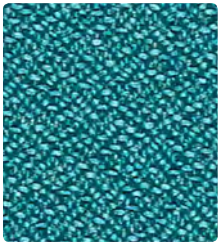
298-017  
Pumice



298-026  
Flint



298-011  
Port



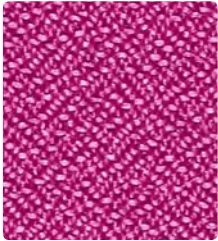
298-044  
Peacock



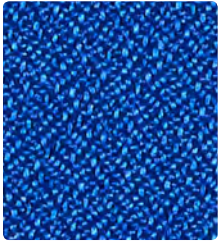
298-027  
Oatmeal



298-036  
Char



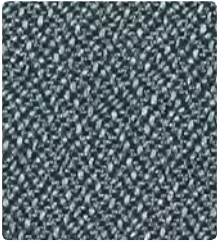
298-035  
Magenta



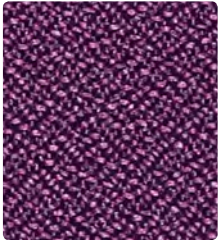
298-014  
Blue Ray



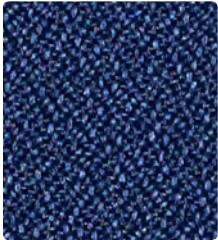
298-010  
Mocha



298-016  
Slate



298-025  
Grape



298-004  
Cadet



298-000  
Fudge



298-006  
Tuxedo

Application  
Upholstery Seating

Content  
100% Polyester

Width  
54 inches

Abrasion (Wyzenbeek/Cotton Duck)  
Passes 183,000 Double Rubs

Finish  
Stain Repellent

Reduced Environmental Impact  
GREENGUARD Gold Certified

**TECHNICAL INFORMATION**

Content: 100% Polyester  
 Width: 54"  
 Backing: Acrylic  
 Approx. Repeat: None

Weight: 12.10 oz./linear yard  
 Finish: Stain Repellent  
 Directional: No  
 Railroaded: No

**PERFORMANCE**

Surface Abrasion: Heavy Duty ASTM D 4157  
 (Wyzenbeek/Cotton Duck)  
 Pilling Resistance ASTM D 3511  
 Colorfastness to Crocking AATCC-8  
 Colorfastness to Light AATCC 16

**Results**

Passes 183,000 Double Rubs  
 Multiple factors affect fabric durability and appearance retention, including end-user application and proper maintenance. Wyzenbeek results above 100,000 double rubs have not been shown to be a reliable indicator of increased fabric lifespan.  
 Class 5  
 Dry: Class 4 min / Wet: Class 4  
 Class 5 at 40 hours

**FLAMMABILITY**

California Technical Bulletin 117-2013  
 NFPA 260/UFAC Class 1  
 ASTM E84 (Adhered) Class 2 or B  
 May comply with California Technical Bulletin 133 when combined with appropriate components.

**REDUCED ENVIRONMENTAL IMPACT**

This product is GREENGUARD Gold Certified for low chemical and particle emissions to UL standard UL 2818 and may contribute to LEED certification. For complete information visit [mayerfabrics.com](http://mayerfabrics.com) and [UL.com/gg](http://UL.com/gg).

**CLEANING INFORMATION**

WS: Water/Solvent Cleaner

**ADDITIONAL INFORMATION**

**Custom Capabilities:** All patterns can be custom colored. Minimum yardage applies.  
**Digital Swatch Card Color Matching:** Due to color variations on different monitors and color printers, actual swatch colors may vary slightly. Please request a memo sample from Mayer Fabrics to ensure proper color representation.  
**Specifications:** Specifications are correct at the time of printing. Current specifications are available on our website.



This fabric meets or exceeds these ACT performance guidelines.  
 \*Certification Marks owned by ACT\*



Water and Stain Repellent Finish



This 100% polyester fabric is included in the Underwriter's Laboratory Fabric Recognition Program. Additional testing of this U.L. recognized component is not required on approved panels from participating manufacturers.



MAYERFABRICS