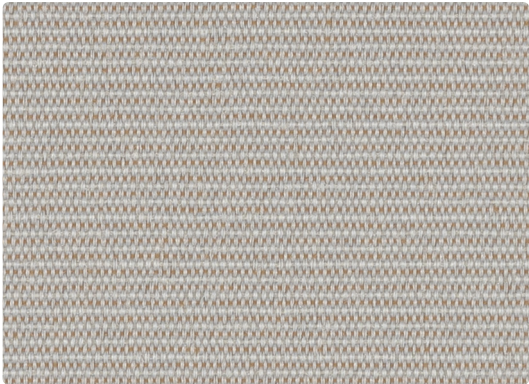
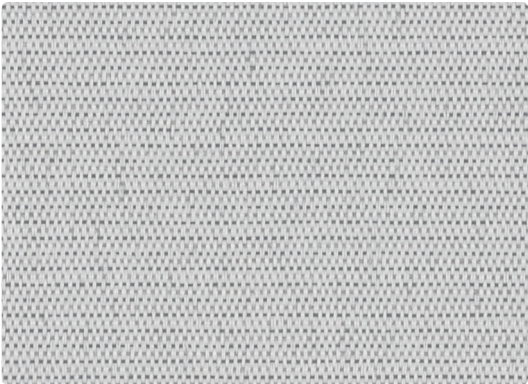


173-000
Cement



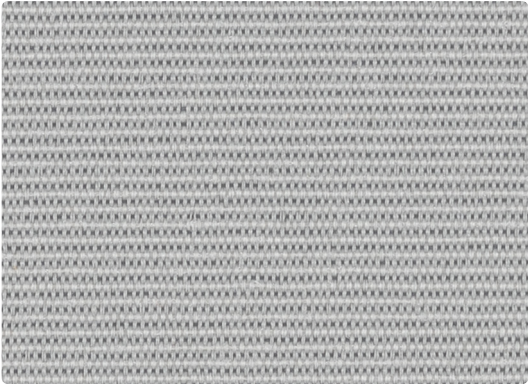
173-007
Dune



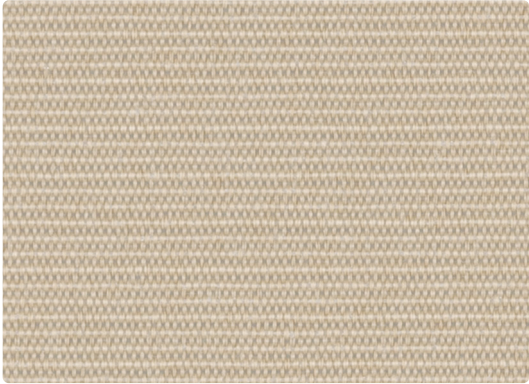
173-016
Silver



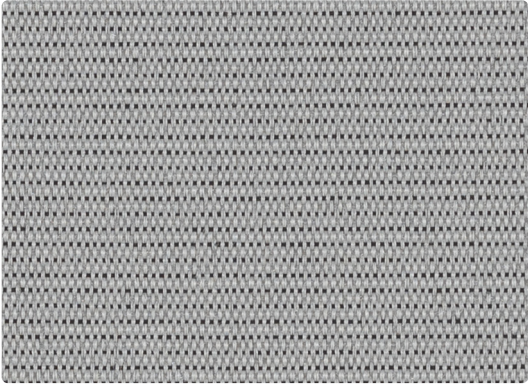
173-017
Sand



173-026
Fog



173-002
Almond



173-006
Nickel

Panel/Wall/Acoustic
100% Recycled Polyester
(92% Post-Consumer/
8% Post-Industrial)
66 inches / 168 cm
No Finish
GREENGUARD Gold Certified

FURROW

TECHNICAL INFORMATION

Application: Panel/Wall/Acoustic

Content: 100% Recycled Polyester (92% Post-Consumer/8% Post-Industrial)

Backing: Acrylic Latex

Weight: 9.728 oz./linear yard / 301.60 g/lm

Width: 66 inches / 168 cm

Finish: None

Approx. Repeat: 0.063 in/0.16 cm H, 0.063 in/0.16 cm V

Directional: Yes

Shown Railroaded: No

PERFORMANCE

Crocking: Dry: Grade 4 / Wet: Grade 3

Colorfastness to Light: Grade 4 at 40 hours

FLAMMABILITY

ASTM E84 (Unadhered) Class 1 or A
California Technical Bulletin 117-2013
NFPA 260/UFAC Class 1

REDUCED ENVIRONMENTAL IMPACT

This product is GREENGUARD Gold Certified for low chemical and particle emissions to UL standard UL 2818 and may contribute to LEED certification. For complete information visit mayerfabrics.com.

No FR Additives No Antimicrobial/Antibacterial Additives PFAS Free

CLEANING INFORMATION


WS: Water/Solvent Cleaner
BC: Bleach Cleanable –
1 part bleach, 9 parts water = 10% bleach, 90% water solution.

DYE TRANSFER DISCLAIMER

Certain clothing and accessory dyes (such as those used on denim jeans) may migrate to lighter colors. This phenomenon is increased by humidity and temperature and is irreversible. Mayer Fabrics will not assume responsibility for dye transfer caused by external contaminants. Please check compatibility when using this product in combination with painted or varnished surfaces.

ADDITIONAL INFORMATION

Custom Colors: All patterns can be custom colored. Minimum yardage applies. Warranty: Please refer to the Mayer website for warranty information by pattern. Digital Swatch Card Color Matching: Due to color variations on different monitors and color printers, actual swatch colors may vary slightly. Please request a memo sample from Mayer Fabrics to ensure proper color representation. Complete and current product information available at mayerfabrics.com.

 This 100% polyester fabric is included in the Underwriter's Laboratory Fabric Recognition Program. Additional testing of this U.L. recognized component is not required on approved panels from participating manufacturers.



MAYERFABRICS