

HAARLEM

Upholstery Seating



MAYERFABRICS

# Upholstery Seating



Mayer Fabrics' Wonderlust Collection, designed by Kimberle Frost, is inspired by the travels and collected objects of Alexander Girard at the Museum of International Folk Art. Mayer Fabrics will donate a portion of all sales to the Museum of International Folk Art.



**Application**  
Upholstery Seating

**Content**  
98% Sunbrella® Acrylic,  
2% Sunbrella® Polyester

**Width**  
54 inches / 137 cm

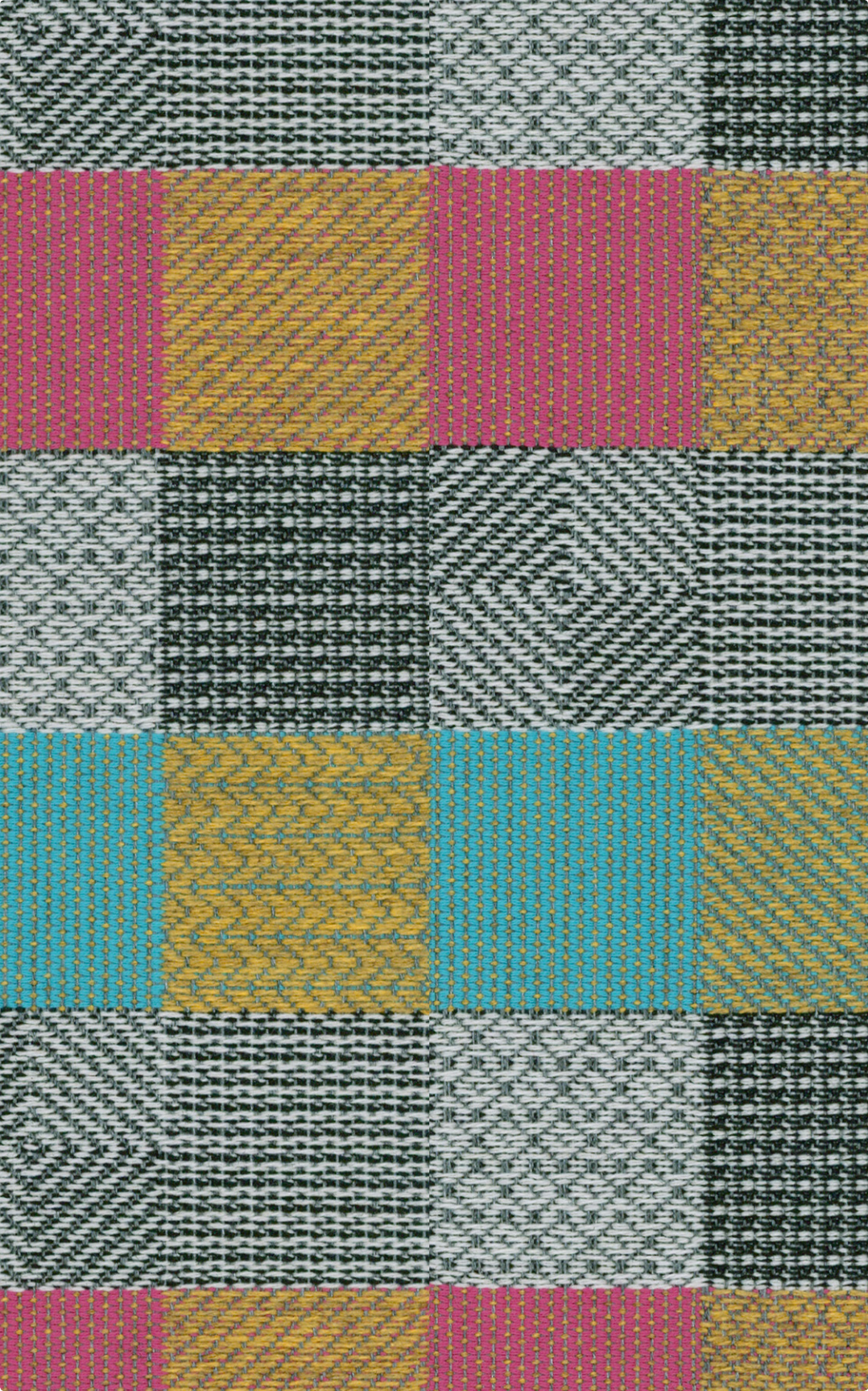
**Abrasion** (Wyzenbeek/Cotton Duck)  
Passes 100,000 Double Rubs

**Finish**  
Liquid and Stain Repel

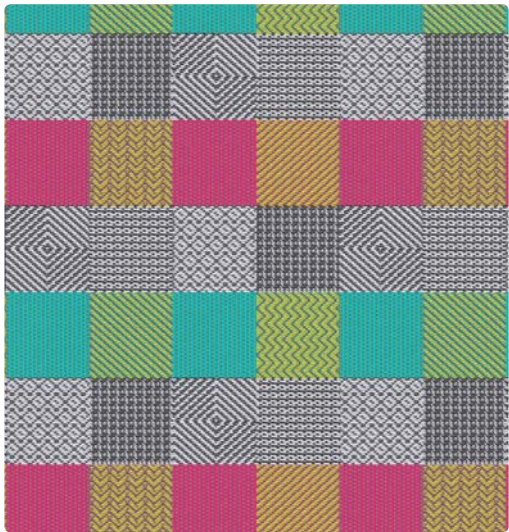
**Reduced Environmental Impact**  
GREENGUARD Gold Certified



447-014  
Modern



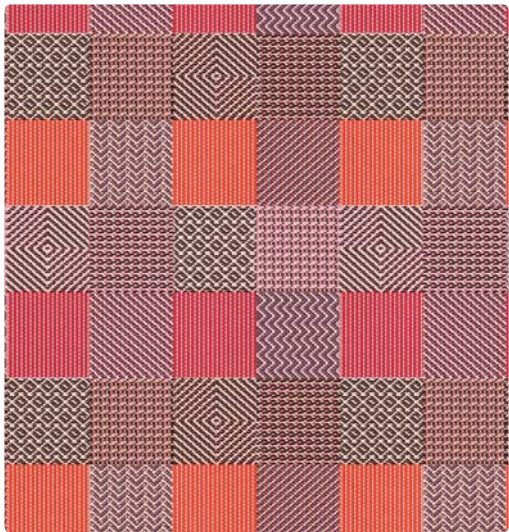




447-014  
Modern



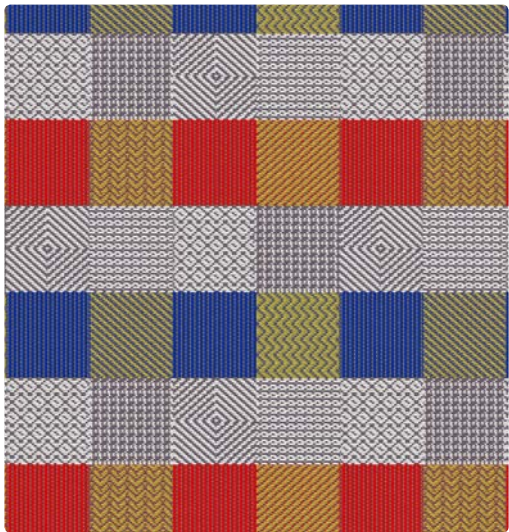
447-000  
Desert



447-001  
Sunset



447-003  
Spring



447-011  
Primary



447-004  
Big Sky

Shown at approximately 25% scale.  
Due to color variations in printing, actual swatch colors may vary slightly.  
Please order a memo sample prior to placing any order.

Mayer Fabrics' Wonderlust Collection, designed by Kimberle Frost, is inspired by the travels and collected objects of Alexander Girard at the Museum of International Folk Art. Mayer Fabrics will donate a portion of all sales to the Museum of International Folk Art.

TECHNICAL INFORMATION

Content: 98% Sunbrella® Acrylic, 2% Sunbrella® Polyester		
Width: 54 inches / 137 cm	Weight: 19.09 oz./linear yard / 591.86 g/lm	
Backing: Acrylic Latex	Finish: Liquid and Stain Repel	
Approx. Repeat: 7.14 in/18.14 cm H, 7.15 in/18.16 cm V	Directional: Yes	Railroaded: No

PERFORMANCE

Surface Abrasion: Heavy Duty ASTM D4157 (Wyzenbeek/Cotton Duck)	Results Passes 100,000 Double Rubs
Warranty	5 Years
Pilling Resistance ASTM D3511	Class 4 min
Colorfastness to Crocking AATCC 8	Dry: Grade 4 min / Wet: Grade 4 min
Colorfastness to Light AATCC 16 Option 3 SAE J 2527	Grade 4 at 2000 hours Grade 4 min at 1500 KJ

FLAMMABILITY

California Technical Bulletin 117-2013  
NFPA 260/UFAC Class 1  
May comply with California Technical Bulletin 133 when combined with appropriate components.

REDUCED ENVIRONMENTAL IMPACT

This product is GREENGUARD Gold Certified for low chemical and particle emissions to UL standard UL 2818 and may contribute to LEED certification. For complete information visit [mayerfabrics.com](http://mayerfabrics.com) and [UL.com/gg](http://UL.com/gg).

**facts\***  
Silver

The Facts icon indicates that a textile has been evaluated based on the requirements of the multi-attribute sustainability standard NSF/ANSI 336 through an independent third-party certification body authorized by the Association for Contract Textiles.

FINISH OPTIONS


Mayer Barrier – Liquid, fluid barrier. Available for 10 yard minimums. Call for pricing.

CLEANING INFORMATION

WS: Water/Solvent Cleaner  
BC: Bleach Cleanable – 1 part bleach, 9 parts water = 10% bleach, 90% water solution. Do not clean/disinfect fabric for longer than 10 minutes using the 10% bleach solution. Always rinse promptly with clean water after applying the bleach solution. Failure to do so will void any and all warranties.

ADDITIONAL INFORMATION

**Custom Capabilities:** All patterns can be custom colored. Minimum yardage applies.  
**Digital Swatch Card Color Matching:** Due to color variations on different monitors and color printers, actual swatch colors may vary slightly. Please request a memo sample from Mayer Fabrics to ensure proper color representation.  
**Specifications:** Specifications are correct at the time of printing. Current specifications are available on our website.



This fabric meets or exceeds these ACT performance guidelines.  
\*Certification Marks owned by ACT®



**CONTRACT**  
Sunbrella® is a registered trademark of Glen Raven, Inc.



**FOLK ART**

