



WC932-007
Lily

HARPER



WC932-017
Dogwood



WC932-002
Primrose



WC932-000
Walnut



WC932-006
Grey

HARPER



WC932-009
Marigold



WC932-003
Bamboo



WC932-001
Carnation



WC932-004
Indigo

HARPER

TECHNICAL INFORMATION

Application: Upholstery

Content: 51% Solution-Dyed Olefin/49% Solution-Dyed Polyester

Backing: Crypton®

Weight: 25 oz./linear yard / 775.09 g/lm

Width: 54 inches / 137 cm

Finish: Crypton® with Antimicrobial Silver Ion Technology

Approx. Repeat: 4 in/10.16 cm H, 4.25 in/10.80 cm V

Directional: Yes

Shown Railroaded: No

PERFORMANCE

Abrasion: Exceeds 100,000 Double Rubs
(Wyzenbeek/Cotton Duck)

Abrasion test results exceeding ACT Performance Guidelines are not an indicator of product lifespan. Multiple factors affect durability and appearance retention.

Crocking: Dry: Grade 4 min / Wet: Grade 4 min

Colorfastness to Light AATCC 16, Option 3: Grade 4 min at 40 hours

FLAMMABILITY

California Technical Bulletin 117-2013
NFPA 260/UFAC Class 1

REDUCED ENVIRONMENTAL IMPACT

This product is GREENGUARD Gold Certified for low chemical and particle emissions to UL standard UL 2818 and may contribute to LEED certification. For complete information visit mayerfabrics.com.

No FR Additives PFAS Free

CLEANING INFORMATION

W: Water-Based Cleaner C: Crypton Cleaning

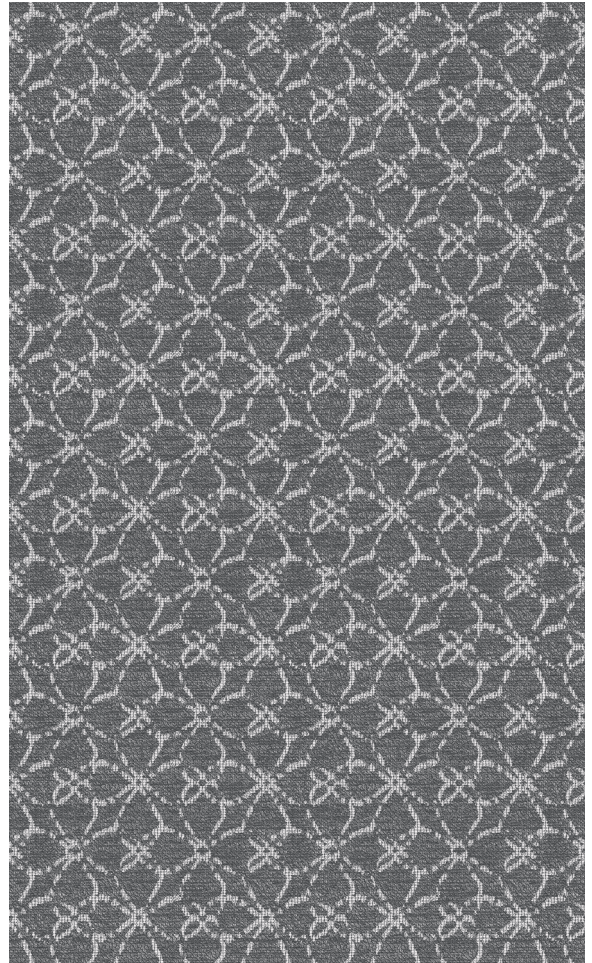
BC: Bleach Cleanable –
1 part bleach, 9 parts water = 10% bleach, 90% water solution.

DYE TRANSFER DISCLAIMER

Certain clothing and accessory dyes (such as those used on denim jeans) may migrate to lighter colors. This phenomenon is increased by humidity and temperature and is irreversible. Mayer Fabrics will not assume responsibility for dye transfer caused by external contaminants. Please check compatibility when using this product in combination with painted or varnished surfaces.

ADDITIONAL INFORMATION

Custom Colors: All patterns can be custom colored. Minimum yardage applies.
Warranty: Please refer to the Mayer website for warranty information by pattern.
Digital Swatch Card Color Matching: Due to color variations on different monitors and color printers, actual swatch colors may vary slightly. Please request a memo sample from Mayer Fabrics to ensure proper color representation.
Complete and current product information available at mayerfabrics.com.



MAYER FABRICS



WC932CD ©2023 51123

T 800.428.4415 mayerfabrics.com
500 S. Kitley Ave. Indianapolis, IN 46219