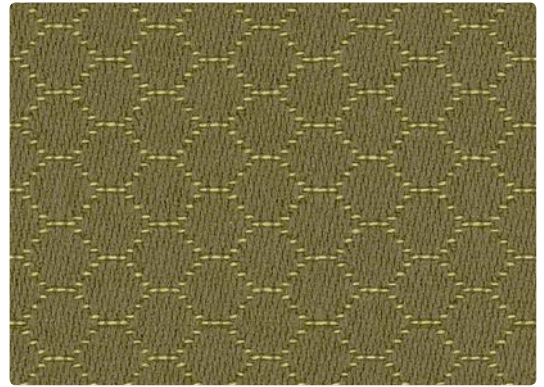
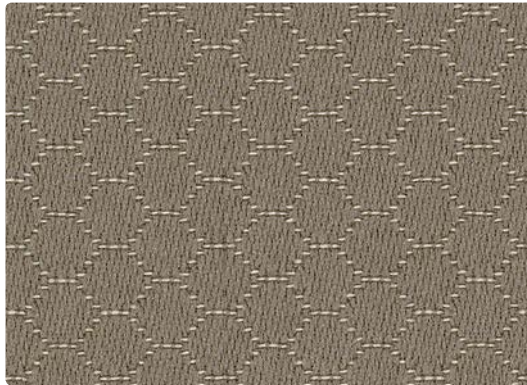




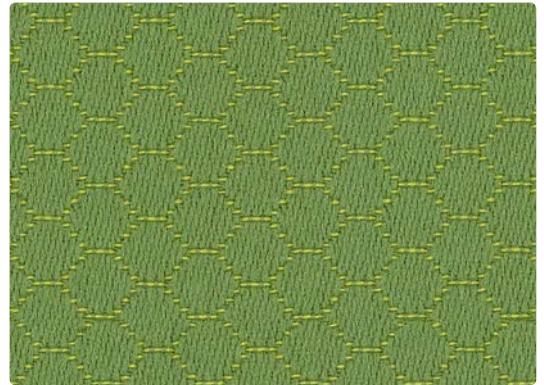
453-007
Alabaster



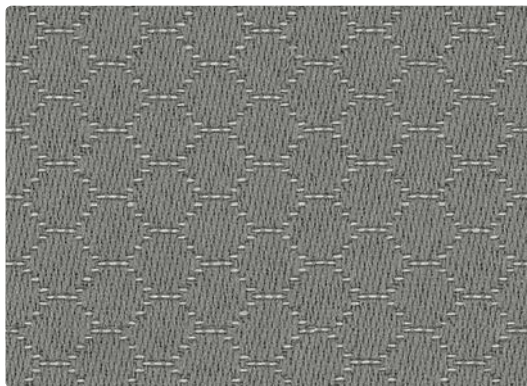
453-013
Olive



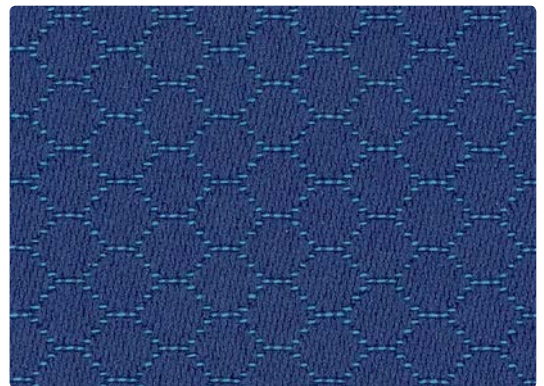
453-000
Pumice



453-003
Lime



453-016
Metal



453-004
Sapphire

Application
Upholstery Seating

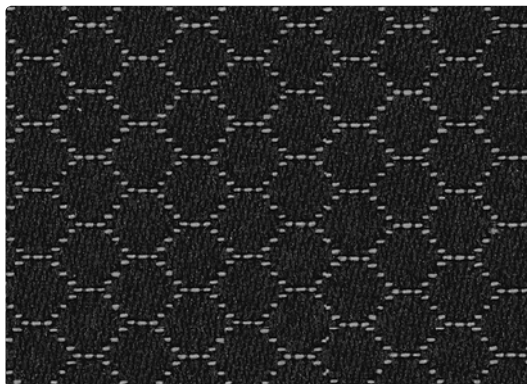
Content
80% Recycled Polyester,
20% Rayon

Width
54 inches / 137 cm

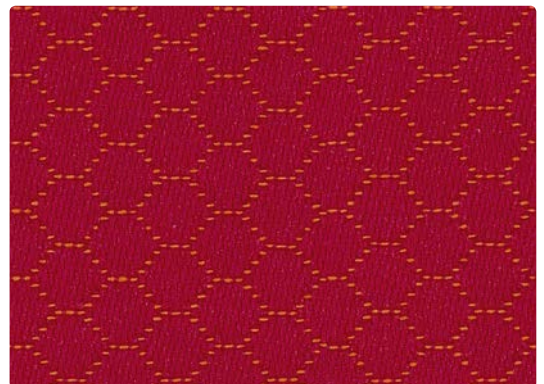
Abrasion (Wyzenbeek/Cotton Duck)
Passes 160,000 Double Rubs

Finish
GreenShield - PFOA and
PFOS Free

Reduced Environmental Impact
GREENGUARD Gold Certified



453-006
Ebony



453-001
Berry



TECHNICAL INFORMATION

Content: **80% Post-Consumer Recycled Polyester**, 20% Rayon

Width: 54 inches / 137 cm

Backing: Acrylic

Approx. Repeat: 0.5625 in/1.43 cm H, 0.375 in/0.95 cm V Non-Matching

Weight: 13 oz./linear yard / 403.04 g/lm

Finish: **GreenShield - PFOA and PFOS Free**

Directional: Yes

Railroaded: No

PERFORMANCE

Surface Abrasion: Heavy Duty ASTM D4157
(Wyzenbeek/Cotton Duck)

Pilling Resistance ASTM D3511

Colorfastness to Crocking AATCC 8

Colorfastness to Light AATCC 16 Option 3

Results

Passes 160,000 Double Rubs Multiple factors affect fabric durability and appearance retention, including end-user application and proper maintenance. Wyzenbeek results above 100,000 double rubs have not been shown to be a reliable indicator of increased fabric lifespan.

Class 5

Dry: Grade 4 min / Wet: Grade 4 min

Grade 4.5 at 40 hours

FLAMMABILITY

California Technical Bulletin 117-2013

NFPA 260/UFAC Class 1

May comply with California Technical Bulletin 133 when combined with appropriate components.

REDUCED ENVIRONMENTAL IMPACT

This product is **GREENGUARD Gold Certified for low chemical and particle emissions to UL standard UL 2818 and may contribute to LEED certification. For complete information visit mayerfabrics.com and UL.com/gg.**

CLEANING INFORMATION

WS: Water/Solvent Cleaner

DYE TRANSFER DISCLAIMER

Certain clothing and accessory dyes (such as those used on denim jeans) may migrate to lighter colors. This phenomenon is increased by humidity and temperature and is irreversible. Mayer Fabrics will not assume responsibility for dye transfer caused by external contaminants. Please check compatibility when using this product in combination with painted or varnished surfaces.

ADDITIONAL INFORMATION

Custom Capabilities: All patterns can be custom colored. Minimum yardage applies.

Digital Swatch Card Color Matching: Due to color variations on different monitors and color printers, actual swatch colors may vary slightly. Please request a memo sample from Mayer Fabrics to ensure proper color representation.

Specifications: Specifications are correct at the time of printing. Current specifications are available on our website.



This fabric meets or exceeds these ACT performance guidelines.
*Certification Marks owned by ACT®

