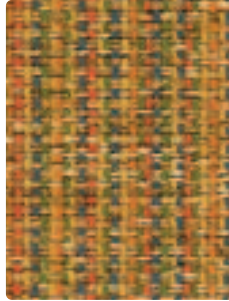
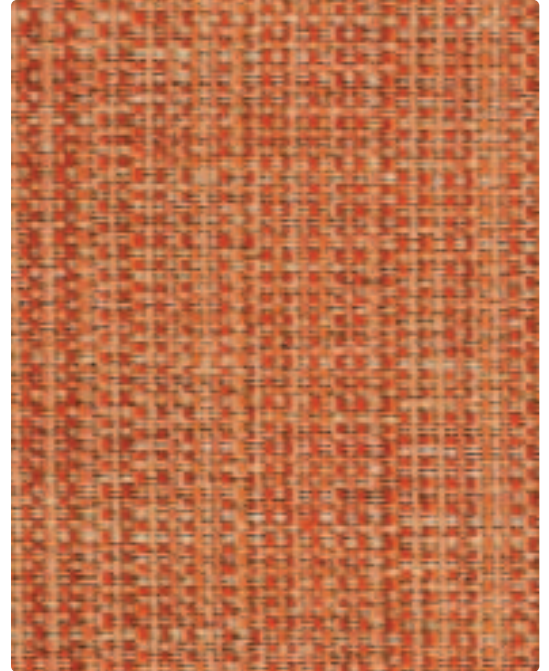




WC757-034 Ice Blue



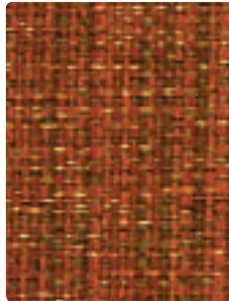
WC757-011 Rainbow



WC757-039 Fiesta



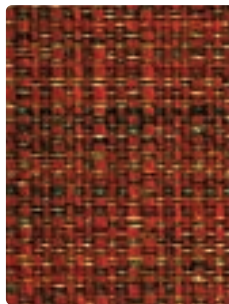
WC757-044 Bluegrass



WC757-009 Spice



WC757-013 Basil



WC757-001 Sangria



WC757-012 Chamois



WC757-007 Sand Dune



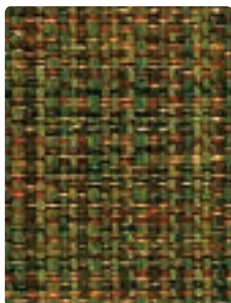
Use
Seating

Content
57% Cotton, 43% Polyester

Width
54 inches

Abrasion
Exceeds 60,000 Double Rubs

Finish
Crypton®



WC757-003 Garland



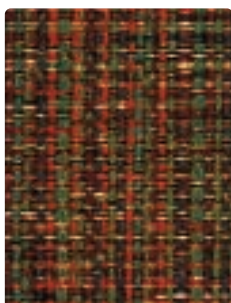
WC757-014 Harbor



WC757-002 Tiger's Eye



WC757-000 Harvest



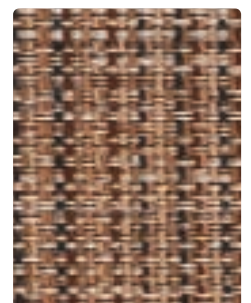
WC757-024 Peacock



WC757-004 Deep Water



WC757-029 Autumn



WC757-016 Granite



TECHNICAL INFORMATION

Content: 57% Cotton, 43% Polyester
 Width: 54"
 Weight: 15.04 oz./linear yd.

Backing: Crypton®
 Finish: Crypton®
 Cleaning Code: C

Approx. Repeat: 11.438" H, 0" V Random Match
 Directional: Yes
 Railroaded: Yes

PERFORMANCE

Test Method	Results
Surface Abrasion: Heavy Duty A *	ASTM-D-4157 (Cotton Duck) Exceeds 60,000 Double Rubs
Breaking Strength: ✂*	ASTM-D-5034 Exceeds Warp 100 lbs/Fill 91 lbs
Pilling Resistance: ✂*	ASTM-D-3511 Passes Class 5
Colorfastness to Crocking: ●*	AATCC-8 Dry: Passes Class 4 min/Wet: Passes Class 3 min
Colorfastness to Light: ☀*	AATCC-16 Exceeds 40 Hours - Class 4

Class in the colorfastness requirements is based on a numerical scale of 5 for negligible or no color transfer to 1 for very severe color change or color transfer.

FLAMMABILITY

California Technical Bulletin 117, Section E (Equivalent to BIFMA) Passes
 NFPA 260 (Equivalent to UFAC) Class 1 Passes
 May comply with California Technical Bulletin 133 when combined with appropriate components.

CLEANING INFORMATION

C: Crypton Cleaning Information – Generally stains are removed with plain water and powdered enzyme detergent. Upholstery foam shampoo, water-based cleaning products and germicidal detergents can be used. Be sure to remove all residue from cleaning products with clean water. Do not use solvent-based cleaners or dry cleaning products. For best cleaning solutions, use CRYPTON UPHOLSTERY CLEANER. Contact Mayer Fabrics.

STAIN RESISTANCE

	After 5 min./After 24 hrs.		After 5 min./After 24 hrs.
Blood	Class 4.5/Class 4.5	Urine	Class 5/Class 5
Iodine	Class 4/Class 4.5	Suntan Lotion	Class 4/Class 4
Ketchup	Class 5/Class 5	Black Coffee	Class 5/Class 5
Milk	Class 5/Class 5	Cola	Class 5/Class 5

BACTERIAL RESISTANCE

Excellent anti-bacterial properties as evidenced by 4 and 5 millimeter-wide growth-free zones produced against the staphylococcus aureus test organism. Crypton resists fungal growth, test AATCC 30-1998, AATCC 6275. Crypton resists bacterial growth, test AATCC 147-1998, AATCC 6538. EPA Approved - When Crypton's Disinfectant and Deodorizer is used on Crypton Super Fabric, you have a disinfected fabric system. Crypton is the first and only fabric approved by the EPA proven to be disinfected.

ADDITIONAL INFORMATION

For information or assistance with products or services, call us at 800.428.4415 or refer to our web site. www.mayerfabrics.com.

Custom Capabilities: All patterns can be custom colored. Minimum yardage applies.

Memo Samples: Please keep this card intact. Individual memo samples and additional colors can be ordered on our web site or by contacting customer service.

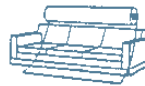
Color Matching: Mayer Fabrics always attempts to ship a satisfactory commercial match. Because of industry standard dye lot variation, colors may not match exactly.

Specifications: Specifications are correct at the time of printing. Current specifications are available on our website.

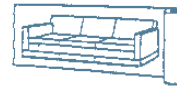
*ACT® Registered Certification Marks



Railroaded: This feature allows reduction of seams and enables smoother furniture tailoring.

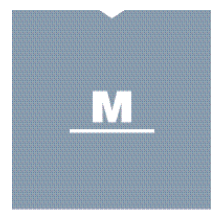


Fabric "up the roll" or "regular" position



Fabric "railroaded" or "top selvage" position

All patterns should be upholstered as shown on card.



MAYERFABRICS

GSA Contract #GS-28F-0022P