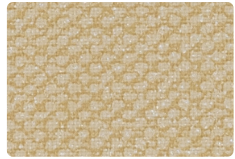




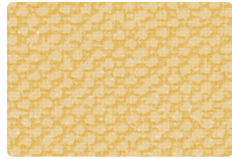
IC-007
Alabaster



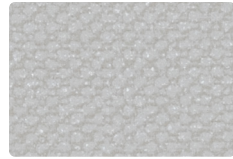
IC-017
Sand



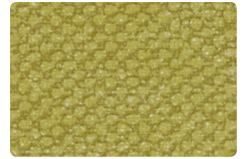
IC-027
Almond



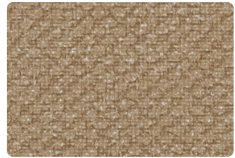
IC-002
Lemon



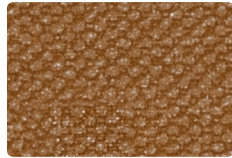
IC-006
Silver



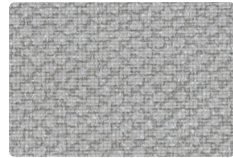
IC-003
Celery



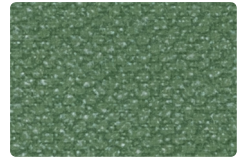
IC-000
Rattan



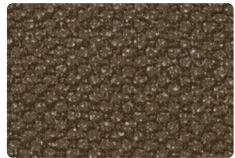
IC-009
Copper



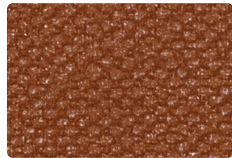
IC-016
Tin



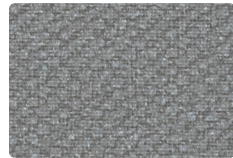
IC-013
Grass



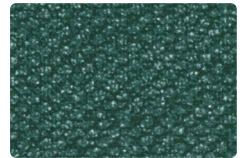
IC-010
Coffee



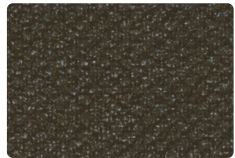
IC-019
Terra



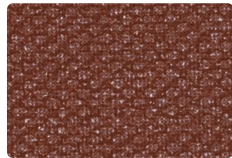
IC-026
Pewter



IC-023
Spruce



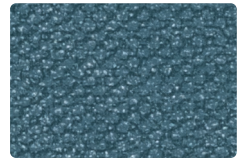
IC-020
Earth



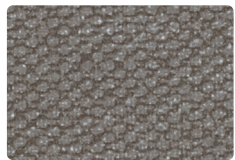
IC-029
Spice



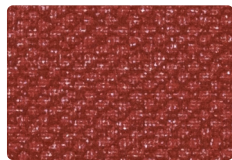
IC-036
Steel



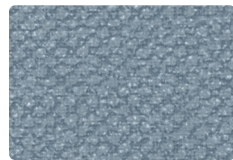
IC-014
Ocean



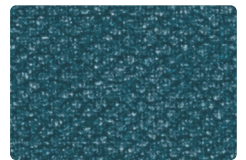
IC-030
Metal



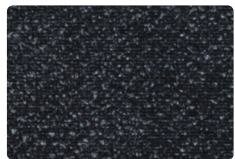
IC-001
Sangria



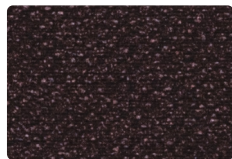
IC-004
Cadet



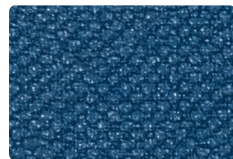
IC-024
Aegean



IC-046
Shadow



IC-005
Raisin



IC-034
Marine



IC-044
Indigo

Upholstery
80% Vinyl - Phthalate Free face,
20% Polyester backing
54 inches / 137 cm
Exceeds 1,000,000 Double Rubs
Soil & Stain Resistant Top Coat
with Ink Resistant Technology
GREENGUARD Certified

TECHNICAL INFORMATION

Application: Upholstery

Content: 80% Vinyl - Phthalate Free face, 20% Polyester backing

Weight: 31 oz./linear yard / 961.11 g/lm

Width: 54 inches / 137 cm

Finish: Soil & Stain Resistant Top Coat with Ink Resistant Technology

Approx. Repeat: None

Directional: Yes

Shown Railroaded: No

PERFORMANCE

Abrasion: Exceeds 1,000,000 Double Rubs
(Wyzenbeek/Cotton Duck)

Abrasion test results exceeding ACT Performance Guidelines are not an indicator of product lifespan. Multiple factors affect durability and appearance retention.

Crocking: Dry: Grade 5 / Wet: Grade 5

Colorfastness to Light: Grade 4.5 at 300 hours

FLAMMABILITY

California Technical Bulletin 117-2013
NFPA 260/UFAC Class 1
FMVSS 302

REDUCED ENVIRONMENTAL IMPACT

This product is GREENGUARD Certified for low chemical and particle emissions to UL standard UL 2818 and may contribute to LEED certification. For complete information visit mayerfabrics.com.

No FR Additives No Antimicrobial/Antibacterial Additives

CLEANING INFORMATION

WS: Water/Solvent Cleaner

BC: Bleach Cleanable –

1 part bleach, 9 parts water = 10% bleach, 90% water solution.

CFC: Coated Fabrics Cleaning – Refer to Mayer website for complete cleaning info.

DYE TRANSFER DISCLAIMER

Certain clothing and accessory dyes (such as those used on denim jeans) may migrate to lighter colors. This phenomenon is increased by humidity and temperature and is irreversible. Mayer Fabrics will not assume responsibility for dye transfer caused by external contaminants. Please check compatibility when using this product in combination with painted or varnished surfaces.

ADDITIONAL INFORMATION

Custom Colors: All patterns can be custom colored. Minimum yardage applies.

Warranty: Please refer to the Mayer website for warranty information by pattern.

Complete and current product information available at mayerfabrics.com.

