

with Ink Resistant Technology



IP-036
Stone



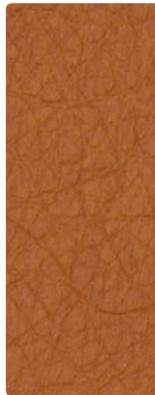
IP-007
Oatmeal



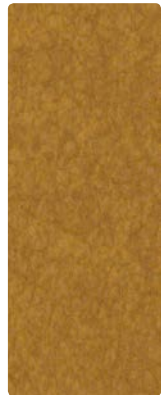
IP-017
Almond



IP-019
Allspice



IP-009
Pumpkin



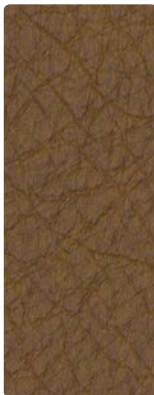
IP-002
Topaz



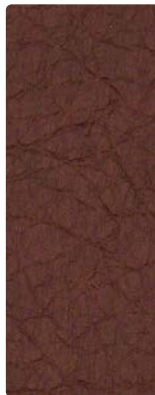
IP-026
Metal



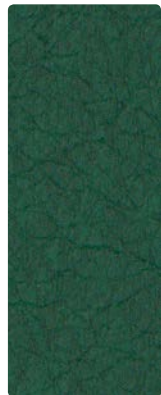
IP-020
Carmel



IP-010
Mushroom



IP-008
Raisin



IP-003
Evergreen



IP-006
Onyx



IP-016
Granite



IP-000
Cocoa Bean



IP-001
Crimson



IP-004
Navy

Application
Upholstery Seating

Content
78% Vinyl face
22% Polyester backing

Width
54 inches / 137 cm

Abrasion (Wyzenbeek/Cotton Duck)
Exceeds 100,000 Double Rubs

Finish
Soil and Stain Resistant Top Coat
with Ink Resistant Technology

Reduced Environmental Impact
GREENGUARD Certified
Phthalate Free - Prop 65
Compliant
No AM/AB/FR added chemicals

TECHNICAL INFORMATION

Content: 78% Vinyl face,
22% Polyester backing

Width: 54 inches / 137 cm

Approx. Repeat: None

Weight: 30 oz./linear yard / 930.10 g/lm

Finish: Soil and Stain Resistant Top Coat with Ink Resistant Technology

Directional: No

Railroaded: No

PERFORMANCE

Surface Abrasion: Heavy Duty ASTM D4157
(Wyzenbeek/Cotton Duck)

Colorfastness to Crocking AATCC 8

Colorfastness to Light AATCC 16, Option 3

Results

Exceeds 100,000 Double Rubs

Dry: Grade 4 min / Wet: Grade 4 min

Grade 5 at 300 hours

FLAMMABILITY

California Technical Bulletin 117-2013

NFPA 260/UFAC Class 1

FMVSS 302

May comply with California Technical Bulletin 133 when combined with appropriate components.

REDUCED ENVIRONMENTAL IMPACT

This product is GREENGUARD Certified for low chemical and particle emissions to UL standard UL 2818 and may contribute to LEED certification. For complete information visit mayerfabrics.com and UL.com/gg.

Phthalate Free (includes all Phthalates listed in CAL Prop 65 & CPSIA)

Lead Free

BPA Free/TRIS Free/Formaldehyde Free

Does not contain Conflict Minerals

SB1019 Compliant - Does not contain added Flame Retardant Chemicals

Does not contain any added Anti-Microbial or Anti-Bacterial Chemicals

CLEANING INFORMATION

BC: Bleach Cleanable – 1 part bleach, 9 parts water = 10% bleach, 90% water solution. Do not clean/disinfect fabric for longer than 10 minutes using the 10% bleach solution. Always rinse promptly with clean water after applying the bleach solution. Failure to do so will void any and all warranties.

CFC: Coated Fabrics Cleaning – Refer to Mayer website for complete cleaning info.

DYE TRANSFER DISCLAIMER

Certain clothing and accessory dyes (such as those used on denim jeans) may migrate to lighter colors. This phenomenon is increased by humidity and temperature and is irreversible. Mayer Fabrics will not assume responsibility for dye transfer caused by external contaminants. Please check compatibility when using this product in combination with painted or varnished surfaces.

ADDITIONAL INFORMATION

Custom Capabilities: All patterns can be custom colored. Minimum yardage applies.

Digital Swatch Card Color Matching: Due to color variations on different monitors and color printers, actual swatch colors may vary slightly. Please request a memo sample from Mayer Fabrics to ensure proper color representation.

Specifications: Specifications are correct at the time of printing. Current specifications are available on our website.



This fabric meets or exceeds these ACT performance guidelines.
*Certification Marks owned by ACT®



MAYERFABRICS