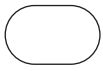


161-017 Gravel



161-002 Straw



**Application**  
Panel

**Content**  
100% Recycled Polyester

**Width**  
66 inches

**Finish**  
None

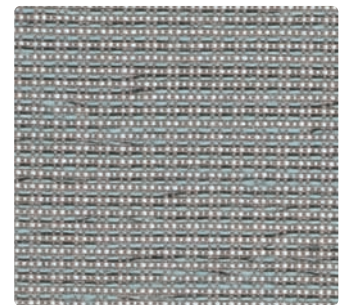
**Reduced Environmental Impact**  
Recycled Content



161-010 Shadow



161-007 Driftwood



161-024 Aquamarine



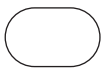
161-016 Gray Mix



161-009 Spice



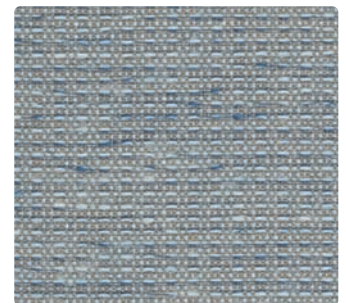
161-014 Pewter



161-006 Charcoal



161-000 Fog



161-004 Denim

## TECHNICAL INFORMATION

Content: **100% Recycled Polyester**  
(73% Pre-/27% Post-Consumer)

Width: 66"  
Weight: 11.3 oz./linear yard

Backing: None  
Finish: None  
Cleaning Code: WS

Visual Repeat: Non-Matching  
Directional: Yes  
Railroaded: No

## PERFORMANCE (\*ACT\* Registered Certification Marks)

Breaking Strength: ✂\*

Test Method  
ASTM-D-5034

Results  
Warp 180 lbs min / Fill 160 lbs min

Colorfastness to Crocking: ☹\*

AATCC-8

Dry: Class 4 min / Wet: Class 3 min

Colorfastness to Light: ☀\*

AATCC-16 Option 3

Class 4 min at 40 hours

Class in the colorfastness requirements is based on a numerical scale of 5 for negligible or no color transfer to 1 for very severe color change or color transfer.

## FLAMMABILITY 🔥\*

ASTM E84 Class 1 or A

Passes

## REDUCED ENVIRONMENTAL IMPACT

### Recycled Content



**GREENGUARD Indoor Air Quality Certification requires products to meet some of the world's toughest chemical emissions standards. GREENGUARD Children & Schools Certification requires those products to meet or exceed additional criteria, including CA Section 01350, to account for the unique health sensitivities of children.**



**Eco System®**

Sustainable. Attainable at Mayer Fabrics

## CLEANING INFORMATION

WS: Water/Solvent Cleaner – Spot clean, with a mild solvent, an upholstery shampoo, or the foam from a mild detergent. When using a solvent or dry cleaning product, follow instructions carefully and clean only in a well-ventilated room. Avoid any product that contains carbon tetrachloride or other toxic materials. With either method, pretest a small area before proceeding.

## ADDITIONAL INFORMATION

**Custom Capabilities:** All patterns can be custom colored. Minimum yardage applies.

**Memo Samples:** Please keep this card intact. Individual memo samples can be ordered on our web site or by contacting customer service.

**Color Matching:** Mayer Fabrics always attempts to ship a satisfactory commercial match. Because of industry standard dye lot variation, colors may not match exactly.

**Specifications:** Specifications are correct at the time of printing. Current specifications are available on our web site.

**For information or assistance with products or services, call us at 800.428.4415 or refer to our web site, [www.mayerfabrics.com](http://www.mayerfabrics.com).**



This 100% polyester panel fabric is included in the Underwriters Laboratory Fabric Recognition Program.

Additional testing of this U.L. recognized component fabric is not required on approved panels from participating manufacturers.



**MAYERFABRICS**

GSA Contract # **GS-28F-0022P**