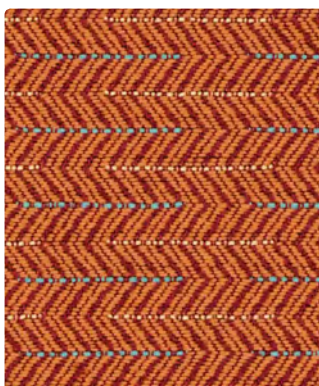




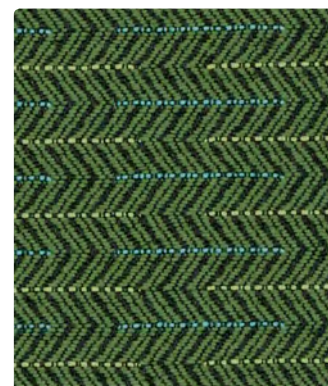
461-007  
Alabaster



461-017  
Stone



461-009  
Mango



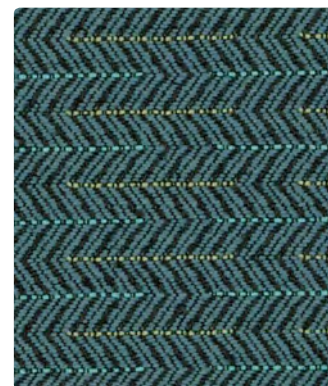
461-003  
Emerald



461-016  
Pewter



461-001  
Bordeaux



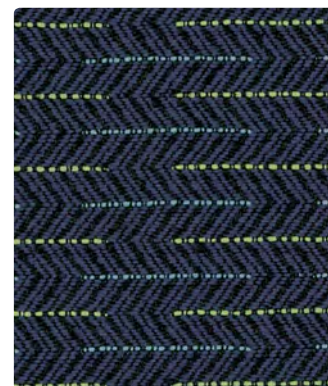
461-014  
Aegean



461-006  
Smoke



461-005  
Aubergine



461-004  
Midnight

**Application**  
Upholstery Seating

**Content**  
100% Polyester

**Width**  
57 inches / 145 cm

**Abrasion** (Wyzenbeek/Cotton Duck)  
Passes 82,000 Double Rubs

**Finish**  
Stain Repellent -  
PFOA & PFOS Free

**Reduced Environmental Impact**  
GREENGUARD Gold Certified

**TECHNICAL INFORMATION**

Content: 100% Polyester

Width: 57 inches / 145 cm

Backing: Acrylic

Approx. Repeat: 1.2 in/3.05 cm H, 0.4 in/1.02 cm V

Weight: 12.43 oz./linear yard / 385.37 g/lm

Finish: Stain Repellent - **PFOA & PFOS Free**

Directional: Yes

Railroaded: No

**PERFORMANCE**

Surface Abrasion: Heavy Duty ASTM D4157  
(Wyzenbeek/Cotton Duck)

Pilling Resistance ASTM D3511

Colorfastness to Crocking AATCC 8

Colorfastness to Light AATCC 16 Option 3

**Results**

Passes 82,000 Double Rubs

Class 4.5

Dry: Grade 4 min / Wet: Grade 4 min

Grade 5 at 40 hours

**FLAMMABILITY**

California Technical Bulletin 117-2013

NFPA 260/UFAC Class 1

May comply with California Technical Bulletin 133 when combined with appropriate components.

**REDUCED ENVIRONMENTAL IMPACT**

This product is **GREENGUARD Gold Certified for low chemical and particle emissions to UL standard UL 2818 and may contribute to LEED certification.** For complete information visit [mayerfabrics.com](http://mayerfabrics.com) and [UL.com/gg](http://UL.com/gg).

**CLEANING INFORMATION**

S: Solvent Cleaner

**DYE TRANSFER DISCLAIMER**

Certain clothing and accessory dyes (such as those used on denim jeans) may migrate to lighter colors. This phenomenon is increased by humidity and temperature and is irreversible. Mayer Fabrics will not assume responsibility for dye transfer caused by external contaminants. Please check compatibility when using this product in combination with painted or varnished surfaces.

**ADDITIONAL INFORMATION**

**Custom Capabilities:** All patterns can be custom colored. Minimum yardage applies.

**Digital Swatch Card Color Matching:** Due to color variations on different monitors and color printers, actual swatch colors may vary slightly. Please request a memo sample from Mayer Fabrics to ensure proper color representation.

**Specifications:** Specifications are correct at the time of printing. Current specifications are available on our website.



This fabric meets or exceeds these ACT performance guidelines.  
\*Certification Marks owned by ACT\*



Water and Stain Repellent Finish



**MAYERFABRICS**

