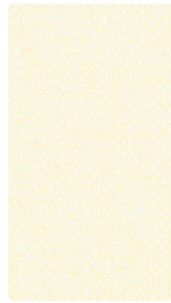
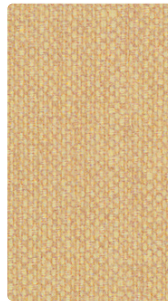


Coated Fabric

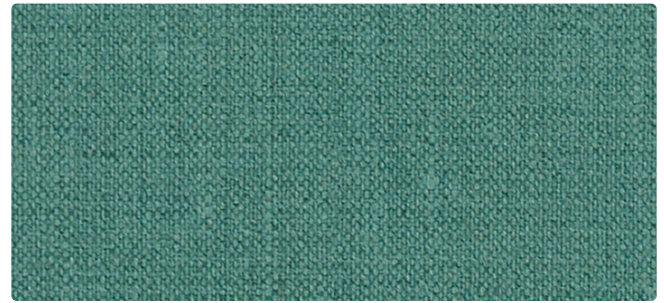
KEY LARGO



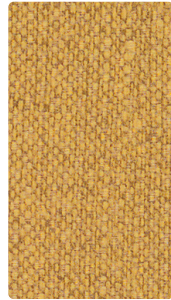
KL-007
Parchment



KL-017
Khaki



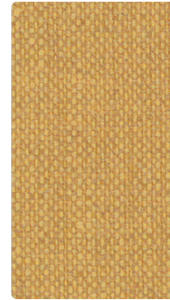
KL-024
Nassau



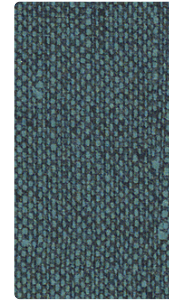
KL-002
Gold Coast



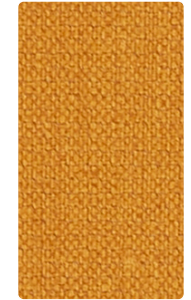
KL-020
Sandstone



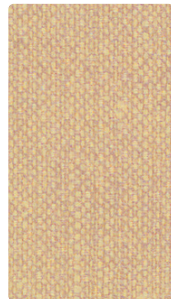
KL-012
Wheat



KL-014
Aegean



KL-022
Jonquil



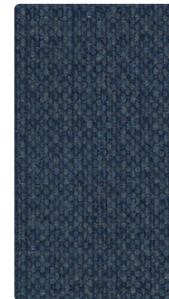
KL-027
Sand



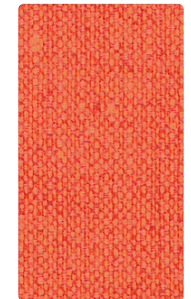
KL-026
Quarry



KL-033
Pear



KL-004
Ultramarine



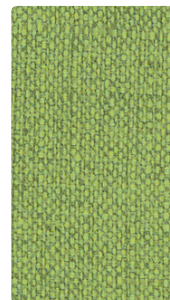
KL-009
Tangerine



KL-010
Toast



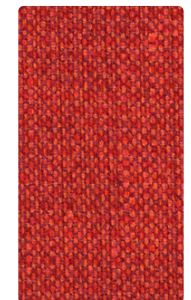
KL-006
Graphite



KL-013
Palm



KL-011
Raspberry



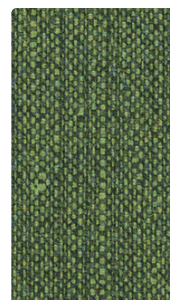
KL-019
Cayenne



KL-000
Chocolate



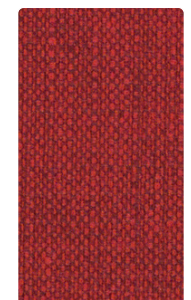
KL-016
Ebony



KL-003
Jungle



KL-015
Crocus



KL-001
Crimson

Upholstery
85% Vinyl - Phthalate Free face,
15% Polyester backing
54 inches / 137 cm
Exceeds 250,000 Double Rubs
Soil & Stain Resistant Top Coat
with Ink Resistant Technology
GREENGUARD Certified

KEY LARGO

TECHNICAL INFORMATION

Application: Upholstery

Content: 85% Vinyl - Phthalate Free face, 15% Polyester backing

Weight: 28 oz./linear yard / 868.10 g/lm

Width: 54 inches / 137 cm

Finish: Soil & Stain Resistant Top Coat with Ink Resistant Technology

Approx. Repeat: None

Directional: Yes

Shown Railroaded: No

PERFORMANCE

Abrasion: Exceeds 250,000 Double Rubs
(Wyzenbeek/Cotton Duck)

Abrasion test results exceeding ACT Performance Guidelines are not an indicator of product lifespan. Multiple factors affect durability and appearance retention.

Crocking: Dry: Grade 4 min / Wet: Grade 4 min

Colorfastness to Light AATCC 16: Grade 4.5 at 650 hours - Suitable for marine use

FLAMMABILITY

California Technical Bulletin 117-2013
NFPA 260/UFAC Class 1
FMVSS 302

REDUCED ENVIRONMENTAL IMPACT

This product is GREENGUARD Certified for low chemical and particle emissions to UL standard UL 2818 and may contribute to LEED certification. For complete information visit mayerfabrics.com.

No FR Additives No Antibacterial/Antimicrobial Additives

CLEANING INFORMATION

BC: Bleach Cleanable –

1 part bleach, 9 parts water = 10% bleach, 90% water solution.

CFC: Coated Fabrics Cleaning – Refer to Mayer website for complete cleaning info.

DYE TRANSFER DISCLAIMER

Certain clothing and accessory dyes (such as those used on denim jeans) may migrate to lighter colors. This phenomenon is increased by humidity and temperature and is irreversible. Mayer Fabrics will not assume responsibility for dye transfer caused by external contaminants. Please check compatibility when using this product in combination with painted or varnished surfaces.

ADDITIONAL INFORMATION

Custom Colors: All patterns can be custom colored. Minimum yardage applies.

Warranty: Please refer to the Mayer website for warranty information by pattern.

Complete and current product information available at mayerfabrics.com.



MAYER FABRICS



KL2CD ©2006 50722

T 800.428.4415 mayerfabrics.com
500 S. Kitley Ave. Indianapolis, IN 46219