

Application
Seating

Raw Material Content
Domestic Top Grain Leather, Aniline Dyed

Hide Size
50-55 Sq. Ft.

Abrasion
ASTM D 7255 - CS10 Wheel Taber, 1,000 cycles with 1,000 gram weight,
Exceeds Heavy Duty

Finish
Semi-aniline, solvent free, also available **Powered by Crypton**

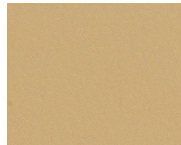
Reduced Environmental Impact
No PCP's or CFC's in the Tanning Process; Low VOC



LLA-010
Saddle



LLA-009
Tangerine



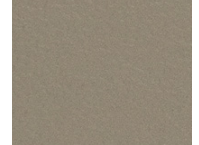
LLA-002
Curry



LLA-043
Bellaire



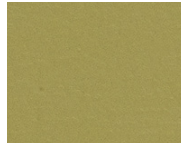
LLA-017
Parchment



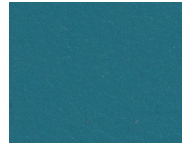
LLA-030
Cobblestone



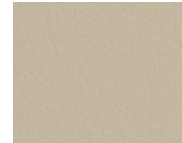
LLA-011
Poppy



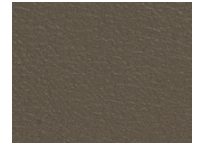
LLA-033
Wasabi



LLA-034
Calypso



LLA-007
Pearl



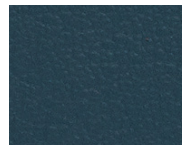
LLA-020
Boulder



LLA-001
Ruby



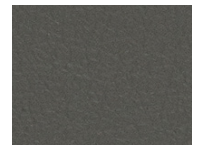
LLA-023
Yucca



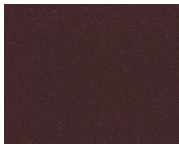
LLA-024
Marina



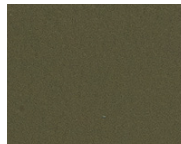
LLA-012
Caramel



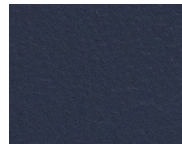
LLA-016
Charcoal



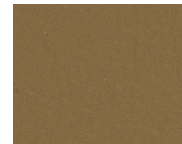
LLA-008
Merlot



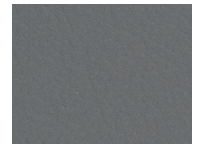
LLA-013
Artichoke



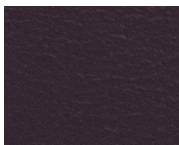
LLA-014
Sapphire



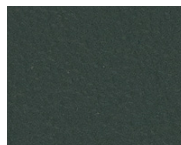
LLA-053
Moss



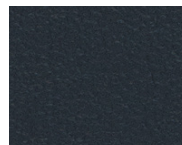
LLA-026
Blue Stone



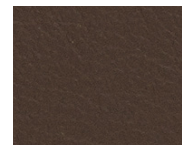
LLA-005
Mulberry



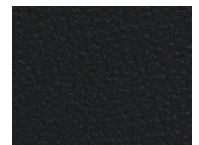
LLA-003
Orchard



LLA-004
Indigo



LLA-000
Cocoa



LLA-006
Ebony

TECHNICAL AND PERFORMANCE INFORMATION

Raw Material Content:	Domestic Top Grain Leather, Aniline Dyed		
Finish:	Semi-aniline, solvent free, also available Powered by Crypton		
Hide Size:	50-55 sq. ft.		
Weight:	2.5-3 oz. / sq. ft.		
Thickness:	FT MS 311-1011.1 - 1.0-1.2 MM		
Abrasion Resistance:	ASTM D 7255 - CS10 Wheel Taber, 1,000 cycles with 1,000 gram weight, Exceeds Heavy Duty		
Blocking:	FT MS 311-312.1 - Separate with ease and no finish damage		
Elongation:	FT MS 311-2031 - 40% max. at 100 lbs		
Grab Strength:	FT MS 311-2031 - 100 lbs. min.		
Stitch Tear:	FT MS 311-2151 - 15 lbs. min. (double hole)		
Flexibility:	ASTM D2097 - 60,000 cycles		
Colorfastness to Light:	AATCC 16 Xenon, 72 hour exposure - Class 4 min.		
Dry / Wet Crocking:	AATCC 8 - Class 4 min. / AATCC 8 - Class 4 min.		
Flammability:	California Technical Bulletin #117 NFPA 260 Boston Fire Code Can be treated to pass IMO A.652(16) 8.3 and FAR 25.853 (FAA spec), please specify Can comply with California Technical Bulletin 133 when combined with appropriate components	Passes Passes Passes	FMVSS 302 (Automotive) IMO A.652 (16) 8.2 NY/NJ Port Authority Passes Passes Passes

REDUCED ENVIRONMENTAL IMPACT

Domestic Leather **No PCP's or CFC's In The Tanning Process, Lead Free** **Low VOC**

CARE AND CLEANING INFORMATION

Genuine leather requires the least care of all upholstery materials. Dusting with a clean dry cloth is the recommended routine cleaning method. For spots and spills, wipe excess liquid immediately and let air dry. If necessary, use lukewarm water with mild non-detergent soap, work into a thin lather with a soft cloth, rinse with clean water and buff to restore lustre.

ADDITIONAL INFORMATION

Custom Capabilities: Custom colors are available with a 10-hide minimum. The **Powered by Crypton** option is available with a one-hide minimum. Please consult your Mayer representative on cost and lead-time.

Fire Codes: For compliance with more stringent fire codes, please consult Mayer Fabrics.

Memo Samples: Please keep this card intact. Individual memo samples can be ordered on our web site or by contacting customer service.

Color Matching: Mayer Fabrics always attempts to ship a satisfactory commercial match. Because of industry standard dye lot variation, colors may not match exactly.

Specifications: Specifications are correct at the time of printing. Current specifications are available on our web site.

For information or assistance with products or services, call us at 800.428.4415 or refer to our web site, www.mayerfabrics.com.



LOW VOC



GSA Contract #GS-28F-0022P