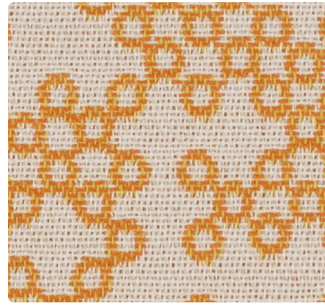
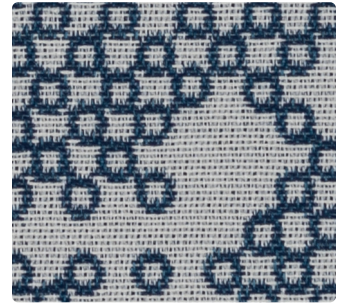


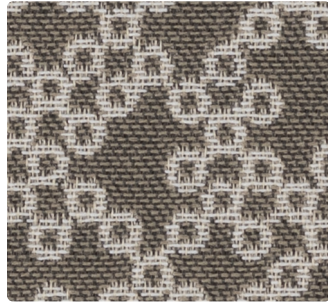
637-007  
**Mineral**



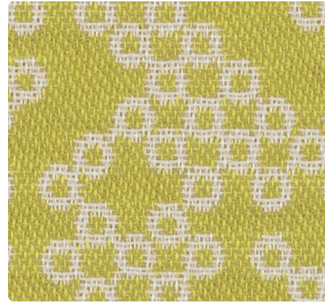
637-009  
**Tangelo**



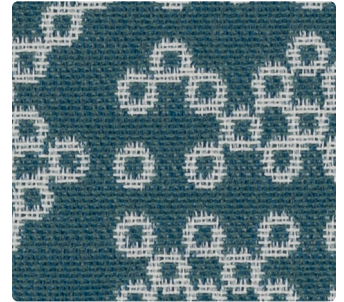
637-004  
**Admiral**



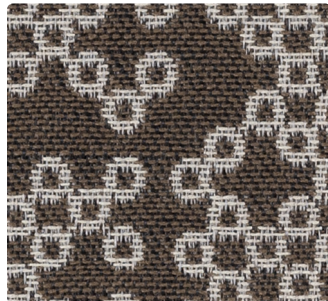
637-000  
**Driftwood**



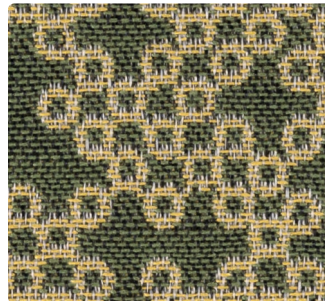
637-003  
**Citron**



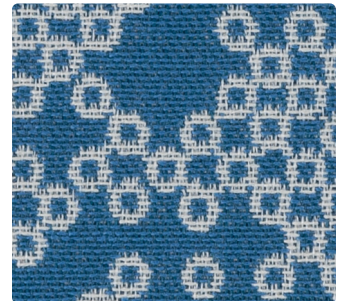
637-014  
**Ocean**



637-010  
**Earth**



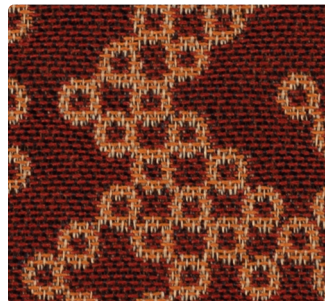
637-013  
**Grass**



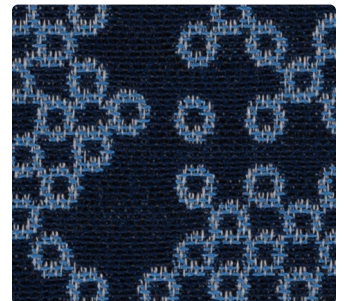
637-024  
**Marine**



637-006  
**Smoke**



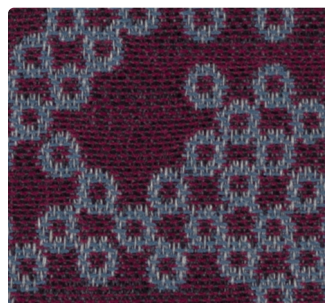
637-001  
**Tomato**



637-034  
**Cobalt**



637-016  
**Shadow**



637-005  
**Plum**



637-044  
**Indigo**

Upholstery  
100% Post-Consumer Recycled Polyester  
54 inches / 137 cm  
Exceeds 100,000 Double Rubs  
Stain Repellent - PFAS Free  
GREENGUARD Gold Certified

# LOOP

## TECHNICAL INFORMATION

Application: Upholstery

Content: 100% Post-Consumer Recycled Polyester

Backing: Acrylic

Weight: 13.488 oz./linear yard / 418.17 g/lm

Width: 54 inches / 137 cm

Finish: Stain Repellent - PFAS Free

Approx. Repeat: 14.5 in/36.83 cm H, 7.375 in/18.73 cm V

Directional: Yes

Shown Railroaded: No

## PERFORMANCE

Abrasion: Exceeds 100,000 Double Rubs  
(Wyzenbeek/Cotton Duck)

Abrasion test results exceeding ACT Performance Guidelines are not an indicator of product lifespan. Multiple factors affect durability and appearance retention.

Crocking: Dry: Grade 4 min / Wet: Grade 3 min

Colorfastness to Light AATCC 16, Option 3: Grade 4 min at 40 hours

## FLAMMABILITY

California Technical Bulletin 117-2013  
NFPA 260/UFAC Class 1

## REDUCED ENVIRONMENTAL IMPACT

This product is GREENGUARD Gold Certified for low chemical and particle emissions to UL standard UL 2818 and may contribute to LEED certification. For complete information visit [mayerfabrics.com](https://mayerfabrics.com).

No FR Additives No Antimicrobial/Antibacterial Additives PFAS Free

## CLEANING INFORMATION

WS: Water/Solvent Cleaner

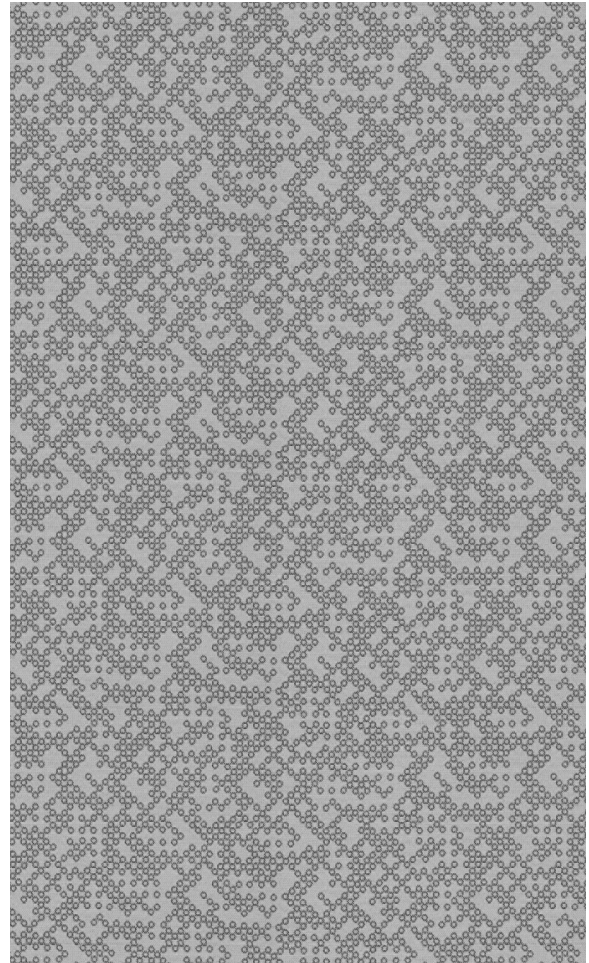
BC: Bleach Cleanable –  
1 part bleach, 9 parts water = 10% bleach, 90% water solution.

## DYE TRANSFER DISCLAIMER

Certain clothing and accessory dyes (such as those used on denim jeans) may migrate to lighter colors. This phenomenon is increased by humidity and temperature and is irreversible. Mayer Fabrics will not assume responsibility for dye transfer caused by external contaminants. Please check compatibility when using this product in combination with painted or varnished surfaces.

## ADDITIONAL INFORMATION

Custom Colors: All patterns can be custom colored. Minimum yardage applies.  
Warranty: Please refer to the Mayer website for warranty information by pattern.  
Digital Swatch Card Color Matching: Due to color variations on different monitors and color printers, actual swatch colors may vary slightly. Please request a memo sample from Mayer Fabrics to ensure proper color representation.  
Complete and current product information available at [mayerfabrics.com](https://mayerfabrics.com).



# MAYERFABRICS



637CD ©2023 50123

T 800.428.4415 [mayerfabrics.com](https://mayerfabrics.com)  
500 S. Kitley Ave. Indianapolis, IN 46219