



419-017
Almond



419-009
Blaze



419-000
Bark



419-007
Sandstone



419-003
Pistachio



419-002
Dijon

Upholstery
100% Recycled Polyester
54 inches / 137 cm
Passes 75,000 Double Rubs

No Finish
GREENGUARD Gold Certified

 Eco-System®
Sustainable. Attainable at Mayer Fabrics.

 facts
Silver



419-016
Greystone



419-014
Surf



419-001
Pomegranate



419-006
Basalt



419-004
Bluebell



419-005
Aubergine

MEANDER

TECHNICAL INFORMATION

Application: Multi-use for upholstery, panels, wrapped walls, and acoustic

Content: 100% Recycled Polyester (52% Pre-/48% Post-Consumer)

Backing: None

Weight: 9.6 oz./linear yard / 297.63 g/lm

Width: 54 inches / 137 cm

Finish: None

Approx. Repeat: 14.3 in/36.32 cm H, 9.5 in/24.13 cm V Random Match

Directional: Yes

Shown Railroaded: No

PERFORMANCE

Abrasion: Passes 75,000 Double Rubs
(Wyzenbeek/Cotton Duck)

Abrasion test results exceeding ACT Performance Guidelines are not an indicator of product lifespan. Multiple factors affect durability and appearance retention.

Crocking: Dry: Grade 4 min / Wet: Grade 3 min

Colorfastness to Light: Grade 4 min at 60 hours

FLAMMABILITY

California Technical Bulletin 117-2013

NFPA 260/UFAC Class 1

ASTM E84 (Unadhered) Class 1 or A

REDUCED ENVIRONMENTAL IMPACT

This product is GREENGUARD Gold Certified for low chemical and particle emissions to UL standard UL 2818 and may contribute to LEED certification. For complete information visit mayerfabrics.com.



Eco-System®
Sustainable. Attainable at Mayer Fabrics.

The Eco-System icon
indicates 100% recycled content.



facts
Silver

The Facts icon indicates that a textile has been evaluated based on the requirements of the multi-attribute sustainability standard NSF/ANSI 336 through an independent third-party certification body authorized by the Association for Contract Textiles.

CLEANING INFORMATION

WS: Water/Solvent Cleaner

BC: Bleach Cleanable –

1 part bleach, 9 parts water = 10% bleach, 90% water solution.

DYE TRANSFER DISCLAIMER

Certain clothing and accessory dyes (such as those used on denim jeans) may migrate to lighter colors. This phenomenon is increased by humidity and temperature and is irreversible. Mayer Fabrics will not assume responsibility for dye transfer caused by external contaminants. Please check compatibility when using this product in combination with painted or varnished surfaces.

ADDITIONAL INFORMATION

Custom Colors: All patterns can be custom colored. Minimum yardage applies.

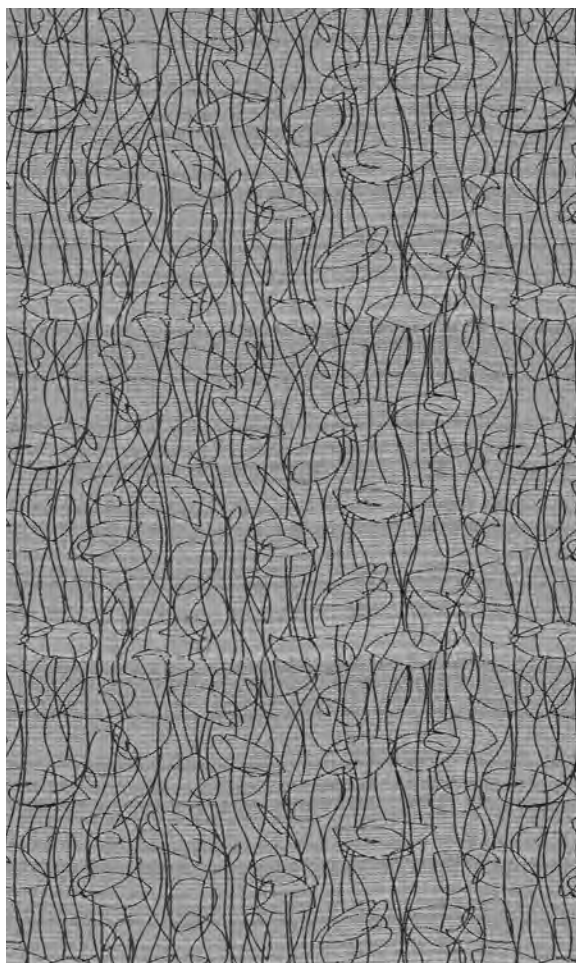
Warranty: Please refer to the Mayer website for warranty information by pattern.

Digital Swatch Card Color Matching: Due to color variations on different monitors and color printers, actual swatch colors may vary slightly. Please request a memo sample from Mayer Fabrics to ensure proper color representation.

Complete and current product information available at mayerfabrics.com.



This 100% polyester fabric is included in the Underwriter's Laboratory Fabric Recognition Program. Additional testing of this U.L. recognized component is not required on approved panels from participating manufacturers.



419CD ©2015 MF1121

 **MAYERFABRICS**

T 800.428.4415 mayerfabrics.com
500 S. Kitley Ave. Indianapolis, IN 46219