



MO-007
Pearl



MO-017
Flax



MO-003
Celery



MO-000
Burlap



MO-002
Straw



MO-013
Jade



MO-010
Mocha



MO-020
Cinnamon



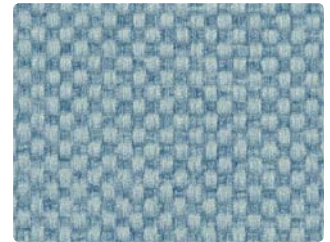
MO-014
Caribbean



MO-016
Silver



MO-011
Paprika



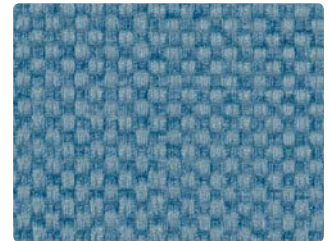
MO-004
Chambray



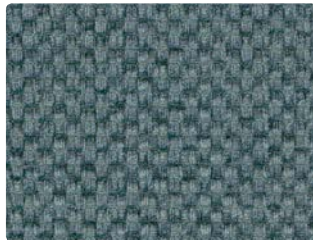
MO-006
Pewter



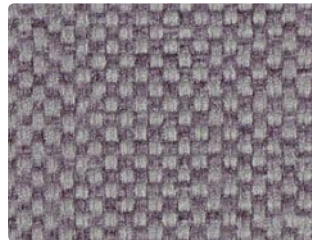
MO-001
Persimmon



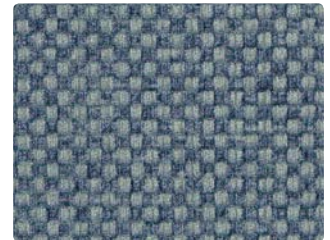
MO-024
Denim



MO-044
Spruce



MO-005
Orchid



MO-034
Ink



Application
Upholstery Seating

Content
81% Vinyl - **Phthalate Free** face
19% Polyester backing

Width
54 inches / 137 cm

Abrasion (Wyzenbeek/Cotton Duck)
Exceeds 100,000 Double Rubs

Finish
Soil and Stain Resistant Top Coat

Reduced Environmental Impact
GREENGUARD Certified
No AM/AB/FR added chemicals
Phthalate Free



TECHNICAL INFORMATION

Content: 81% Vinyl - **Phthalate Free** face,
19% Polyester backing

Width: 54 inches / 137 cm

Approx. Repeat: Non-Matching

Weight: 30 oz./linear yard / 930.10 g/lm

Finish: Soil and Stain Resistant Top Coat

Directional: Yes

Railroaded: No

PERFORMANCE

Surface Abrasion: Heavy Duty CFFA 1a / ASTM D4157
(Wyzenbeek/Cotton Duck)

Colorfastness to Crocking CFFA 7 / AATCC 8

Colorfastness to Light Xenotest: AATCC 16, Option 3 /
NTC 1479 / CFFA-2 a1 - Blue Wool

Results

Exceeds 100,000 Double Rubs

Dry: Grade 4 / Wet: Grade 4

Grade 5 at 1000 hours

FLAMMABILITY

California Technical Bulletin 117-2013

NFPA 260/UFAC Class 1

May comply with California Technical Bulletin 133 when combined with appropriate components.

REDUCED ENVIRONMENTAL IMPACT

This product is **GREENGUARD Certified** for low chemical and particle emissions to **UL standard UL 2818** and may contribute to **LEED certification**. For complete information visit mayerfabrics.com and UL.com/gg.

Prop 65 Compliant

Phthalate Free

Biocide Free

No Fire Retardants

No Heavy Metals

Formaldehyde Free

CLEANING INFORMATION

BC: Bleach Cleanable – 1 part bleach, 9 parts water = 10% bleach, 90% water solution. **Do not clean/disinfect fabric for longer than 10 minutes using the 10% bleach solution. Always rinse promptly with clean water after applying the bleach solution. Failure to do so will void any and all warranties.**

CFC: Coated Fabrics Cleaning – Refer to Mayer website for complete cleaning info.

DYE TRANSFER DISCLAIMER

Certain clothing and accessory dyes (such as those used on denim jeans) may migrate to lighter colors. This phenomenon is increased by humidity and temperature and is irreversible. Mayer Fabrics will not assume responsibility for dye transfer caused by external contaminants. Please check compatibility when using this product in combination with painted or varnished surfaces.

ADDITIONAL INFORMATION

Custom Capabilities: All patterns can be custom colored. Minimum yardage applies.

Digital Swatch Card Color Matching: Due to color variations on different monitors and color printers, actual swatch colors may vary slightly. Please request a memo sample from Mayer Fabrics to ensure proper color representation.

Specifications: Specifications are correct at the time of printing. Current specifications are available on our website.



This fabric meets or exceeds these ACT performance guidelines.
*Certification Marks owned by ACT®



MAYERFABRICS