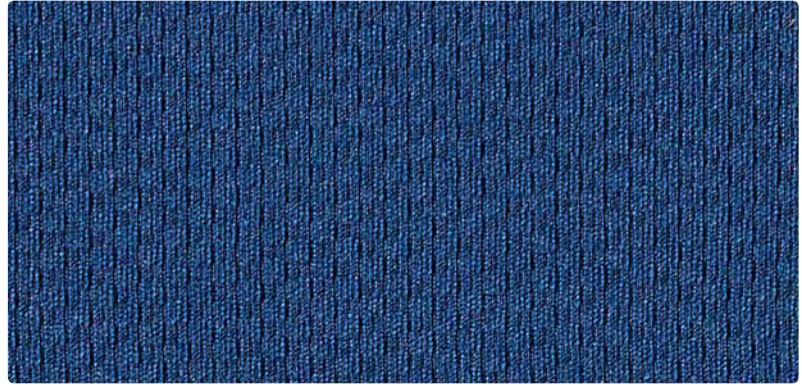




333-019
Tangerine



333-014
Cobalt



333-001
Flame



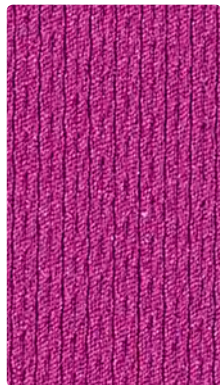
333-023
Grass



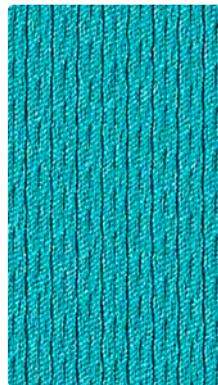
333-007
Pumice



333-036
Flint



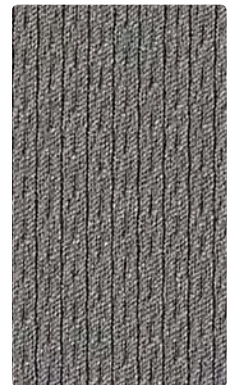
333-005
Mulberry



333-024
Teal



333-010
Mocha



333-026
Storm



333-011
Ruby



333-004
Indigo



333-000
Bark



333-006
Ebony

Application
Upholstery Seating

Content
100% Recycled Polyester

Width
54 inches

Abrasion (Wyzenbeek/Cotton Duck)
Passes 378,000 Double Rubs

Finish
None

Reduced Environmental Impact
GREENGUARD Gold Certified

Eco-System®
Sustainable. Attainable at Mayer Fabrics.

TECHNICAL INFORMATIONContent: **100% Repreve® Post-Consumer Recycled Polyester**

Width: 54"

Weight: 13.5 oz./linear yard

Backing: None

Finish: None

Approx. Repeat: .25" H, .25" V

Directional: Yes

Railroaded: No

PERFORMANCESurface Abrasion: Heavy Duty ASTM D 3597/4157
(Wyzenbeek/Cotton Duck)**Results**Passes 378,000 Double Rubs Multiple factors affect fabric durability and appearance retention, including end-user application and proper maintenance. Wyzenbeek results above 100,000 double rubs have not been shown to be a reliable indicator of increased fabric lifespan.

Pilling Resistance ASTM D 3511

Class 5

Colorfastness to Crocking AATCC 8

Dry: Class 4 min / Wet: Class 4 min

Colorfastness to Light AATCC 16

Class 4.5 at 40 hours

Stretchability ASTM 5034

Length 45% / Width 40%

Recovery AATCC-135, table 1, method 3

2% X 2%

FLAMMABILITY

California Technical Bulletin 117-2013

NFPA 260/UFAC Class 1

May comply with California Technical Bulletin 133 when combined with appropriate components.

REDUCED ENVIRONMENTAL IMPACT**This product is GREENGUARD Gold Certified for low chemical and particle emissions to UL standard UL 2818 and may contribute to LEED certification. For complete information visit mayerfabrics.com and UL.com/gg.**

The Eco-System icon indicates 100% recycled content.

CLEANING INFORMATION

WS: Water/Solvent Cleaner

ADDITIONAL INFORMATION**Custom Capabilities:** All patterns can be custom colored. Minimum yardage applies.**Digital Swatch Card Color Matching:** Due to color variations on different monitors and color printers, actual swatch colors may vary slightly. Please request a memo sample from Mayer Fabrics to ensure proper color representation.**Specifications:** Specifications are correct at the time of printing. Current specifications are available on our website.This fabric meets or exceeds these ACT performance guidelines.
Certification Marks owned by ACT**MAYERFABRICS**