



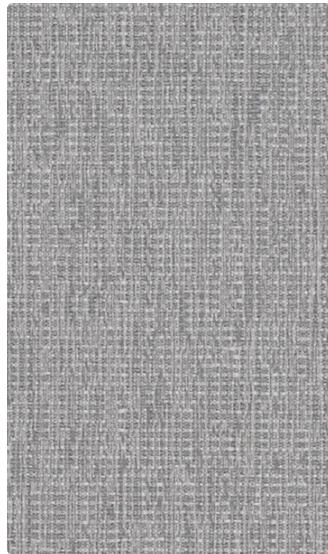
157-014
Blue Mist



157-003
Ambrosia



157-007
Quartz



157-004
Sky



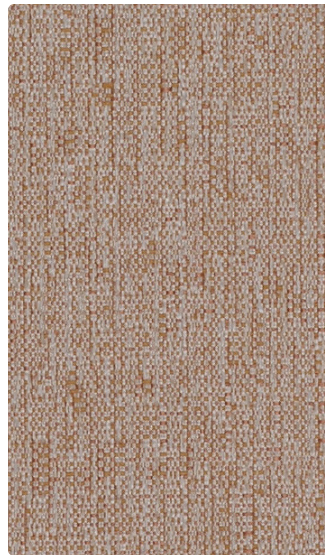
157-016
Fog



157-017
Sand



157-006
Pewter



157-009
Spice



157-000
Cliff


Application
Panel/Wall

Content
100% Recycled Polyester

Width
66 inches / 168 cm

Finish
None

Reduced Environmental Impact
GREENGUARD Gold Certified

 **Eco System®**
Sustainable. Attainable at Mayer Fabrics.

TECHNICAL INFORMATION

Content: **100% Recycled Polyester (61% Pre-/39% Post-Consumer)**

Width: 66 inches / 168 cm

Weight: 11.536 oz./linear yard / 357.66 g/lm

Backing: None

Finish: None

Approx. Repeat: Non-Matching

Directional: Yes

Railroaded: No

PERFORMANCE

Colorfastness to Crocking AATCC 8

Dry: Grade 4 min / Wet: Grade 3 min

Colorfastness to Light AATCC 16

Grade 4 min at 40 hours

FLAMMABILITY

ASTM E84 (Unadhered) Class 1 or A
California Technical Bulletin 117-2013
NFPA 260/UFAC Class 1

Results

REDUCED ENVIRONMENTAL IMPACT

This product is GREENGUARD Gold Certified for low chemical and particle emissions to UL standard UL 2818 and may contribute to LEED certification. For complete information visit mayerfabrics.com and UL.com/gg.



The Eco System icon indicates 100% recycled content.

CLEANING INFORMATION

WS: Water/Solvent Cleaner

BC: Bleach Cleanable – 1 part bleach, 9 parts water = 10% bleach, 90% water solution. Do not clean/disinfect fabric for longer than 10 minutes using the 10% bleach solution. Always rinse promptly with clean water after applying the bleach solution. Failure to do so will void any and all warranties.

ADDITIONAL INFORMATION

Custom Capabilities: All patterns can be custom colored. Minimum yardage applies.

Digital Swatch Card Color Matching: Due to color variations on different monitors and color printers, actual swatch colors may vary slightly. Please request a memo sample from Mayer Fabrics to ensure proper color representation.

Specifications: Specifications are correct at the time of printing. Current specifications are available on our website.



This fabric meets or exceeds these ACT performance guidelines. *Certification Marks owned by ACT*



This 100% polyester fabric is included in the Underwriter's Laboratory Fabric Recognition Program. Additional testing of this U.L. recognized component is not required on approved panels from participating manufacturers.



MAYERFABRICS

