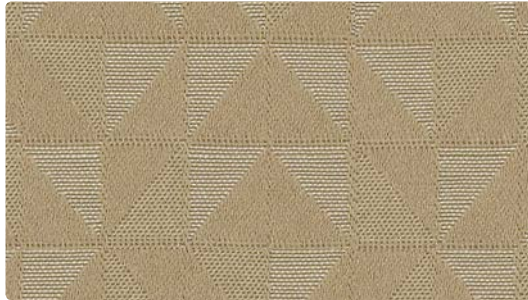




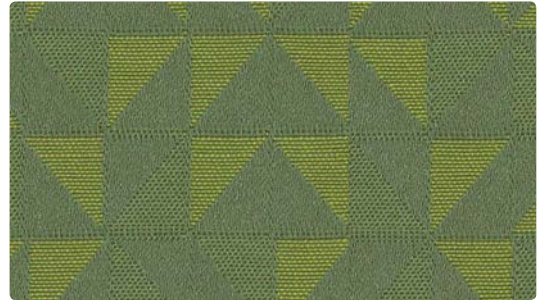
452-017  
Stone



452-002  
Citron



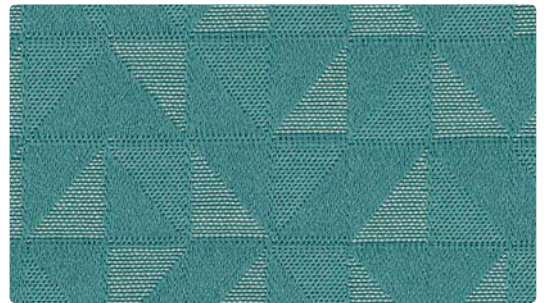
452-007  
Jute



452-003  
Grass



452-000  
Sable



452-013  
Ocean

**Application**  
Upholstery Seating

**Content**  
60% Recycled Polyester,  
40% Rayon

**Width**  
54 inches / 137 cm

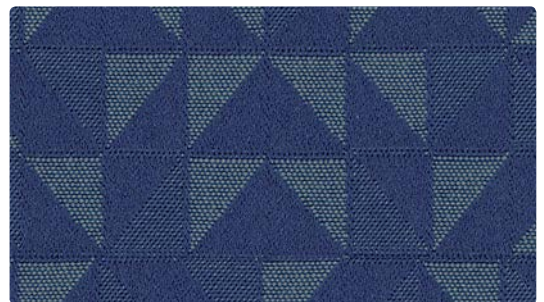
**Abrasion** (Wyzenbeek/Cotton Duck)  
Exceeds 100,000 Double Rubs

**Finish**  
GreenShield - PFOA and  
PFOS Free

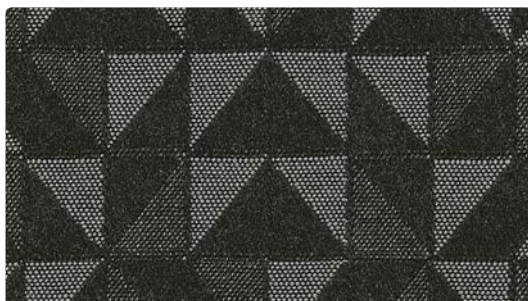
**Reduced Environmental Impact**  
GREENGUARD Gold Certified



452-016  
Smoke



452-004  
Navy



452-006  
Onyx



452-001  
Mulberry

**TECHNICAL INFORMATION**Content: **60% Post-Consumer Recycled Polyester**, 40% Rayon

Width: 54 inches / 137 cm

Backing: Acrylic

Approx. Repeat: 3.5 in/8.89 cm H, 4.5 in/11.43 cm V

Weight: 13 oz./linear yard / 403.04 g/lm

Finish: **GreenShield - PFOA and PFOS Free**

Directional: Yes

Railroaded: No

**PERFORMANCE**Surface Abrasion: Heavy Duty ASTM D4157  
(Wyzenbeek/Cotton Duck)

Pilling Resistance ASTM D3511

Colorfastness to Crocking AATCC 8

Colorfastness to Light AATCC 16 Option 3

**Results**

Exceeds 100,000 Double Rubs

Class 5

Dry: Grade 4 min / Wet: Grade 4 min

Grade 4 min at 40 hours

**FLAMMABILITY**

California Technical Bulletin 117-2013

NFPA 260/UFAC Class 1

May comply with California Technical Bulletin 133 when combined with appropriate components.

**REDUCED ENVIRONMENTAL IMPACT****This product is GREENGUARD Gold Certified for low chemical and particle emissions to UL standard UL 2818 and may contribute to LEED certification. For complete information visit [mayerfabrics.com](http://mayerfabrics.com) and [UL.com/gg](http://UL.com/gg).****CLEANING INFORMATION**

WS: Water/Solvent Cleaner

**DYE TRANSFER DISCLAIMER**

Certain clothing and accessory dyes (such as those used on denim jeans) may migrate to lighter colors. This phenomenon is increased by humidity and temperature and is irreversible. Mayer Fabrics will not assume responsibility for dye transfer caused by external contaminants. Please check compatibility when using this product in combination with painted or varnished surfaces.

**ADDITIONAL INFORMATION****Custom Capabilities:** All patterns can be custom colored. Minimum yardage applies.**Digital Swatch Card Color Matching:** Due to color variations on different monitors and color printers, actual swatch colors may vary slightly. Please request a memo sample from Mayer Fabrics to ensure proper color representation.**Specifications:** Specifications are correct at the time of printing. Current specifications are available on our website.This fabric meets or exceeds these ACT performance guidelines.  
\*Certification Marks owned by ACT®