

444-007 Modern



Mayer Fabrics' Wonderlust Collection, designed by Kimberle Frost, is inspired by the travels and collected objects of Alexander Girard at the Museum of International Folk Art. Mayer Fabrics will donate a portion of all sales to the Museum of International Folk Art.



444-001 Fiesta



CONTRACT



444-008 Sunset

Application
Upholstery Seating

Content
98% Sunbrella® Acrylic,
2% Sunbrella® Polyester

Width
54 inches / 137 cm

Abrasion (Wyzenbeek/Cotton Duck)
Exceeds 100,000 Double Rubs

Finish
Liquid and Stain Repel

Reduced Environmental Impact
GREENGUARD Gold Certified



444-000 Stone



444-002 Spring



444-003 Cacti



Mayer Fabrics' Wonderlust Collection, designed by Kimberle Frost, is inspired by the travels and collected objects of Alexander Girard at the Museum of International Folk Art. Mayer Fabrics will donate a portion of all sales to the Museum of International Folk Art.

TECHNICAL INFORMATION

Content: 98% Sunbrella® Acrylic, 2% Sunbrella® Polyester
 Width: 54 inches / 137 cm
 Backing: Acrylic Latex
 Approx. Repeat: 7.39 in/18.77 cm H, 0 in/0 cm V

Weight: 16.72 oz./linear yard / 518.38 g/lm
 Finish: Liquid and Stain Repel
 Directional: Yes Shown Railroaded: Yes

PERFORMANCE

Surface Abrasion: Heavy Duty ASTM D4157
 (Wyzenbeek/Cotton Duck)

Results
 Exceeds 100,000 Double Rubs

Warranty
 Pilling Resistance ASTM D3511
 Colorfastness to Crocking AATCC 8
 Colorfastness to Light AATCC 16 Option 3
 SAE J 2527

5 Years
 Class 5 min
 Dry: Grade 4 min / Wet: Grade 4 min
 Grade 4 at 2000 hours
 Grade 4 min at 1500 KJ

FLAMMABILITY

California Technical Bulletin 117-2013
 NFPA 260/UFAC Class 1
 May comply with California Technical Bulletin 133 when combined with appropriate components.

REDUCED ENVIRONMENTAL IMPACT

This product is GREENGUARD Gold Certified for low chemical and particle emissions to UL standard UL 2818 and may contribute to LEED certification. For complete information visit mayerfabrics.com and UL.com/gg.

 The Facts icon indicates that a textile has been evaluated based on the requirements of the multi-attribute sustainability standard NSF/ANSI 336 through an independent third-party certification body authorized by the Association for Contract Textiles.

FINISH OPTIONS

Mayer Barrier – Liquid, fluid barrier. Available for 10 yard minimums. Call for pricing.

CLEANING INFORMATION

WS: Water/Solvent Cleaner

BC: Bleach Cleanable – 1 part bleach, 9 parts water = 10% bleach, 90% water solution. Do not clean/disinfect fabric for longer than 10 minutes using the 10% bleach solution. Always rinse promptly with clean water after applying the bleach solution. Failure to do so will void any and all warranties.

ADDITIONAL INFORMATION

Custom Capabilities: All patterns can be custom colored. Minimum yardage applies.

Digital Swatch Card Color Matching: Due to color variations on different monitors and color printers, actual swatch colors may vary slightly. Please request a memo sample from Mayer Fabrics to ensure proper color representation.

Specifications: Specifications are correct at the time of printing. Current specifications are available on our website.



This fabric meets or exceeds these ACT performance guidelines. *Certification Marks owned by ACT®

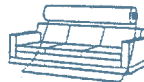


CONTRACT

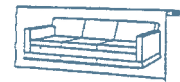
Sunbrella® is a registered trademark of Glen Raven, Inc.



Railroaded: This feature allows reduction of seams and enables smoother furniture tailoring.

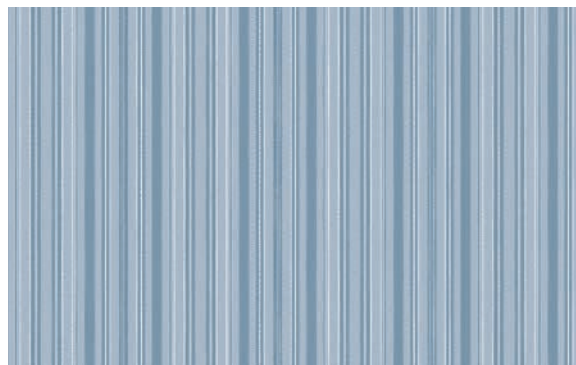


Fabric "up the roll" or "regular" position



Fabric "railroaded" or "top selvage" position

We recommend all railroaded patterns should be upholstered as shown on card.



PUNO – Approx. Repeat: 7.39 in/18.77 cm H, 0 in/0 cm V
 Shown Railroaded



MAYERFABRICS