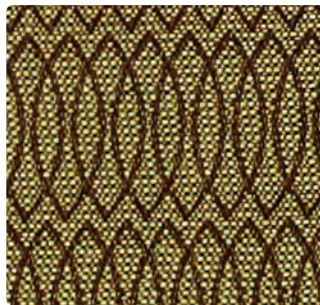


421-024 Aquatic



421-002 Mellow



421-003 Pistachio



421-013 Caribbean



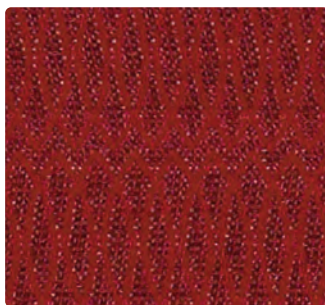
421-009 Tangelo



421-034 Powder Blue



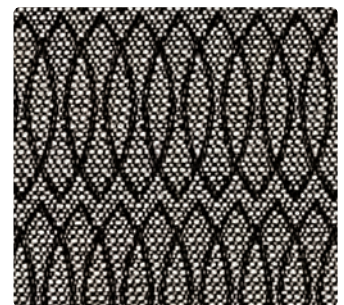
421-007 Taupe



421-001 Garnet



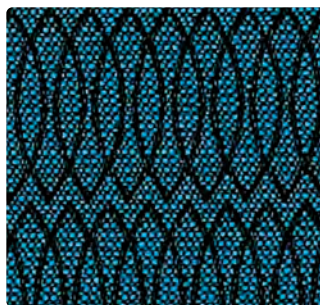
421-014 Delft



421-006 Charcoal



421-005 Violet



421-004 Marine



421-000 Granite



Application
Multi-purpose for panels,
wrapped walls & upholstery

Content
100% Recycled Polyester

Width
54 inches

Abrasion
Exceeds 100,000 Double Rubs

Finish
None

Reduced Environmental Impact
Recycled Content
GREENGUARD Gold Certified



REPREVE
IT'S WHAT'S IN IT™



TECHNICAL INFORMATION

Content: 100% Recycled Polyester (52% Repreve® Post-/48% Pre-Consumer)	Backing: None	Approx. Repeat: 0.375" H, 1.875" V
Width: 54"	Finish: None	Directional: Yes
Weight: 9.3 oz./linear yd.	Cleaning Code: WS, BC	Railroaded: No

PERFORMANCE (*Certification Marks Owned by ACT)	Test Method	Results
Surface Abrasion: Heavy Duty A*	ASTM D-4157 (Cotton Duck)	Exceeds 100,000 Double Rubs
Breaking Strength: X*	ASTM D-5034	Warp 250 min lbs / Fill 180 min lbs
Seam Slippage: X*	ASTM D-4034	Warp 70 lbs min / Fill 50 lbs min
Pilling Resistance: X*	ASTM D-3511	Class 4 min
Colorfastness to Crocking: ●*	AATCC-8	Dry: Class 4 min / Wet: Class 3 min
Colorfastness to Light: ☀*	AATCC 16 Option 3	Class 4 min at 60 hours

FLAMMABILITY **🔥***

California Technical Bulletin 117-2013	Passes
NFPA 260 (Equivalent to UFAC) Class 1	Passes
ASTM E84 (Unadhered) Class 1 or A	Passes

May comply with California Technical Bulletin 133 when combined with appropriate components.

REDUCED ENVIRONMENTAL IMPACT

Recycled Content

GREENGUARD Gold Certified products are tested for low chemical emissions to standard UL 2818. For more information, visit UL.com/gg.

facts* The Facts icon indicates that a textile has been evaluated based on the requirements of the multi-attribute sustainability standard NSF/ANSI 336 through an independent third-party certification body authorized by the Association for Contract Textiles.

Eco-System® The Eco-System icon indicates 100% recycled content.
Sustainable, Attainable at Mayer Fabrics.

REPREVE® Repreve® polyester is made from post-consumer plastic bottles and pre-consumer fiber waste, making it one of the most earth-friendly fabric ingredients you'll find anywhere. The proprietary Repreve process took years to develop and is third party certified for recycled content. The production of Repreve polyester conserves energy and natural resources by offsetting the need to produce virgin polyester fiber, creating a reprieve for the planet. Repreve is a trademark of Unifi, Inc.

CLEANING INFORMATION

WS: Water/Solvent Cleaner – Spot clean with a mild solvent, an upholstery shampoo, or the foam from a mild detergent. When using a solvent or dry cleaning product, follow instructions carefully and clean only in a well-ventilated room. Avoid any product that contains carbon tetrachloride or other toxic materials. With either method, pretest a small area before proceeding. Always rinse promptly with clean water.

BC: Bleach Cleanable – 1 part bleach, 9 parts water = 10% bleach, 90% water solution. **Do not clean/disinfect fabric for longer than 10 minutes using the 10% bleach solution. Always rinse promptly with clean water after applying the bleach solution. Failure to do so will void any and all warranties.**

ADDITIONAL INFORMATION

- Custom Capabilities:** All patterns can be custom colored. Minimum yardage applies.
 - Memo Samples:** Please keep this card intact. Individual memo samples can be ordered on our website or by contacting customer service.
 - Fabric Color Matching:** Mayer Fabrics always attempts to ship a satisfactory commercial match. Because of industry standard dye lot variation, colors may not match exactly.
 - Digital Swatch Card Color Matching:** Due to color variations on different monitors and color printers, actual swatch colors may vary slightly. Please request a memo sample from Mayer Fabrics to ensure proper color representation.
 - Specifications:** Specifications are correct at the time of printing. Current specifications are available on our website.
- For information or assistance with products or services, call us at 800.428.4415 or refer to our website, www.mayerfabrics.com.**



MAYERFABRICS