



462-007
Bisque



462-006
Abalone



462-002
Butterscotch



462-003
Lime



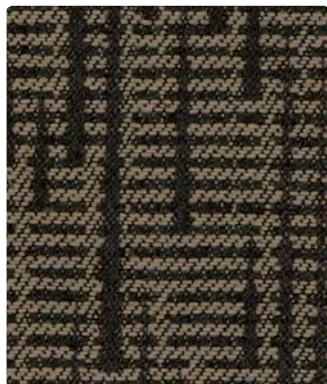
462-017
Fossil



462-009
Cinnabar



462-013
Spa



462-016
Char



462-001
Cardinal



462-004
Cobalt

Application
Upholstery Seating

Content
100% Polyester

Width
57 inches / 145 cm

Abrasion (Wyzenbeek/Cotton Duck)
Passes 55,000 Double Rubs

Finish
Stain Repellent -
PFOA & PFOS Free

Reduced Environmental Impact
GREENGUARD Gold Certified

TECHNICAL INFORMATION

Content: 100% Polyester

Width: 57 inches / 145 cm

Backing: Acrylic

Approx. Repeat: 3.7 in/9.4 cm H, 6.625 in/16.83 cm V

Weight: 10.97 oz./linear yard / 340.11 g/lm

Finish: Stain Repellent - **PFOA & PFOS Free**

Directional: Yes

Railroaded: No

PERFORMANCESurface Abrasion: Heavy Duty ASTM D4157
(Wyzenbeek/Cotton Duck)

Pilling Resistance ASTM D3511

Colorfastness to Crocking AATCC 8

Colorfastness to Light AATCC 16 Option 3

Results

Passes 55,000 Double Rubs

Class 5

Dry: Grade 4 min / Wet: Grade 4 min

Grade 5 at 40 hours

FLAMMABILITY

California Technical Bulletin 117-2013

NFPA 260/UFAC Class 1

May comply with California Technical Bulletin 133 when combined with appropriate components.

REDUCED ENVIRONMENTAL IMPACT

This product is **GREENGUARD Gold Certified for low chemical and particle emissions to UL standard UL 2818** and may contribute to **LEED certification**. For complete information visit mayerfabrics.com and UL.com/gg.

CLEANING INFORMATION

S: Solvent Cleaner

DYE TRANSFER DISCLAIMER

Certain clothing and accessory dyes (such as those used on denim jeans) may migrate to lighter colors. This phenomenon is increased by humidity and temperature and is irreversible. Mayer Fabrics will not assume responsibility for dye transfer caused by external contaminants. Please check compatibility when using this product in combination with painted or varnished surfaces.

ADDITIONAL INFORMATION**Custom Capabilities:** All patterns can be custom colored. Minimum yardage applies.**Digital Swatch Card Color Matching:** Due to color variations on different monitors and color printers, actual swatch colors may vary slightly. Please request a memo sample from Mayer Fabrics to ensure proper color representation.**Specifications:** Specifications are correct at the time of printing. Current specifications are available on our website.

This fabric meets or exceeds these ACT performance guidelines.
*Certification Marks owned by ACT®

**Water and Stain
Repellent Finish****MAYERFABRICS**