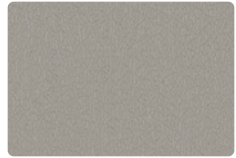


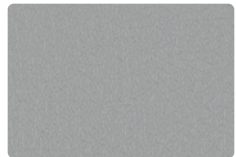
RY-007
Blizzard



RY-017
Light Grey



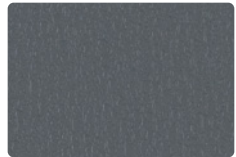
RY-016
Dovetail



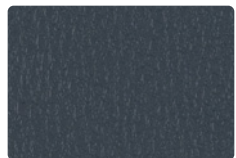
RY-026
Zinc



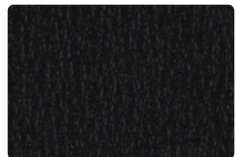
RY-036
Slate



RY-046
Shark Fin



RY-056
Caviar



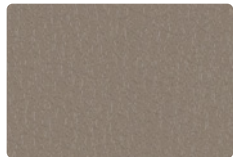
RY-006
Black



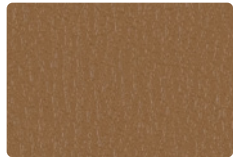
RY-004
Deep Sea



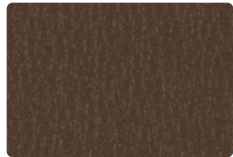
RY-027
Pumice



RY-037
Griffin



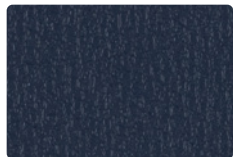
RY-047
Camel



RY-000
Mocha



RY-010
Chocolate



RY-044
Navy



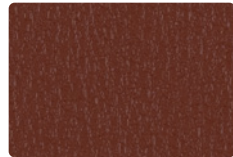
RY-002
Saffron



RY-009
Orange



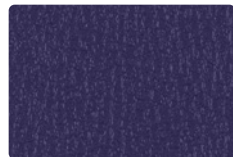
RY-001
Scarlet



RY-019
Burnt Sienna



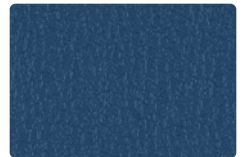
RY-008
Brandy



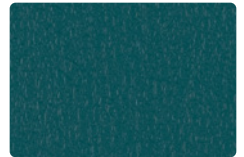
RY-005
Grape



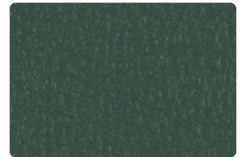
RY-014
Aegean



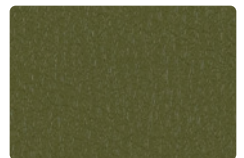
RY-024
Sapphire



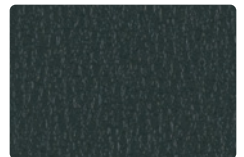
RY-034
Calypso



RY-003
Parsley



RY-013
Herb



RY-023
Spruce

Upholstery
88% Vinyl - Phthalate Free face,
12% Polyester backing
54 inches / 137 cm
Exceeds 500,000 Double Rubs
Soil & Stain Resistant Top Coat

TECHNICAL INFORMATION

Application: Upholstery

Content: 88% Vinyl - Phthalate Free face, 12% Polyester backing

Weight: 30 oz./linear yard / 930.10 g/lm

Width: 54 inches / 137 cm

Finish: Soil & Stain Resistant Top Coat

Directional: No

Shown Railroaded: No

PERFORMANCE

Abrasion: Exceeds 500,000 Double Rubs
(Wyzenbeek/Cotton Duck)

Abrasion test results exceeding ACT Performance Guidelines are not an indicator of product lifespan. Multiple factors affect durability and appearance retention.

Crocking: Dry: Grade 4.5 / Wet: Grade 5

Colorfastness to Light: AATCC 16, Option 3: Grade 4 at 200 hours

FLAMMABILITY

California Technical Bulletin 117-2013
NFPA 260/UFAC Class 1
FMVSS 302

REDUCED ENVIRONMENTAL IMPACT

No FR Additives No Antimicrobial/Antibacterial Additives PFAS Free

CLEANING INFORMATION

WS: Water/Solvent Cleaner

BC: Bleach Cleanable –

1 part bleach, 9 parts water = 10% bleach, 90% water solution.

CFC: Coated Fabrics Cleaning – Refer to Mayer website for complete cleaning info.

DYE TRANSFER DISCLAIMER

Certain clothing and accessory dyes (such as those used on denim jeans) may migrate to lighter colors. This phenomenon is increased by humidity and temperature and is irreversible. Mayer Fabrics will not assume responsibility for dye transfer caused by external contaminants. Please check compatibility when using this product in combination with painted or varnished surfaces.

ADDITIONAL INFORMATION

Custom Colors: All patterns can be custom colored. Minimum yardage applies.

Warranty: Please refer to the Mayer website for warranty information by pattern.

Digital Swatch Card Color Matching: Due to color variations on different monitors and color printers, actual swatch colors may vary slightly. Please request a memo sample from Mayer Fabrics to ensure proper color representation.

Complete and current product information available at mayerfabrics.com.

