

463-007
Pearl



463-006
Pewter



463-009
Melon



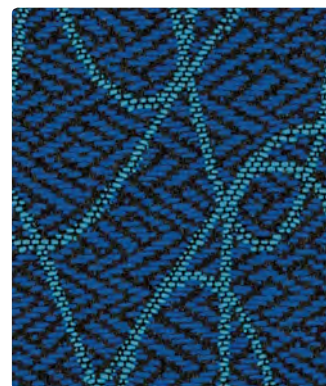
463-014
Cerulean



463-026
Dove



463-001
Persimmon



463-004
Azure



463-016
Onyx



463-011
Burgundy



463-003
Shamrock

Application
Upholstery Seating

Content
100% Polyester

Width
57 inches / 145 cm

Abrasion (Wyzenbeek/Cotton Duck)
Passes 85,000 Double Rubs

Finish
Stain Repellent -
PFOA & PFOS Free

Reduced Environmental Impact
GREENGUARD Gold Certified

TECHNICAL INFORMATION

Content: 100% Polyester

Width: 57 inches / 145 cm

Backing: Acrylic

Approx. Repeat: 5 in/12.7 cm H, 5 in/12.7 cm V

Weight: 14.06 oz./linear yard / 435.91 g/lm

Finish: Stain Repellent - **PFOA & PFOS Free**

Directional: Yes

Railroaded: No

PERFORMANCE

Surface Abrasion: Heavy Duty ASTM D4157
(Wyzenbeek/Cotton Duck)

Pilling Resistance ASTM D3511

Colorfastness to Crocking AATCC 8

Colorfastness to Light AATCC 16 Option 3

Results

Passes 85,000 Double Rubs

Class 5

Dry: Grade 4 min / Wet: Grade 4 min

Grade 5 at 40 hours

FLAMMABILITY

California Technical Bulletin 117-2013

NFPA 260/UFAC Class 1

May comply with California Technical Bulletin 133 when combined with appropriate components.

REDUCED ENVIRONMENTAL IMPACT

This product is **GREENGUARD Gold Certified for low chemical and particle emissions to UL standard UL 2818** and may contribute to **LEED certification**. For complete information visit mayerfabrics.com and UL.com/gg.

CLEANING INFORMATION

S: Solvent Cleaner

DYE TRANSFER DISCLAIMER

Certain clothing and accessory dyes (such as those used on denim jeans) may migrate to lighter colors. This phenomenon is increased by humidity and temperature and is irreversible. Mayer Fabrics will not assume responsibility for dye transfer caused by external contaminants. Please check compatibility when using this product in combination with painted or varnished surfaces.

ADDITIONAL INFORMATION

Custom Capabilities: All patterns can be custom colored. Minimum yardage applies.

Digital Swatch Card Color Matching: Due to color variations on different monitors and color printers, actual swatch colors may vary slightly. Please request a memo sample from Mayer Fabrics to ensure proper color representation.

Specifications: Specifications are correct at the time of printing. Current specifications are available on our website.



This fabric meets or exceeds these ACT performance guidelines.
*Certification Marks owned by ACT®



Water and Stain Repellent Finish



MAYERFABRICS

