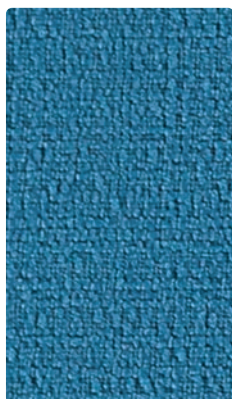


312-039 **Mango** (Nano-Tex® only)  
DB409-039 (Nano-Tex® + DuraBlock®)



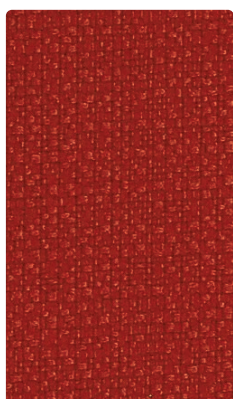
312-044 **Cyan** (Nano-Tex® only)  
DB409-044 (Nano-Tex® + DuraBlock®)



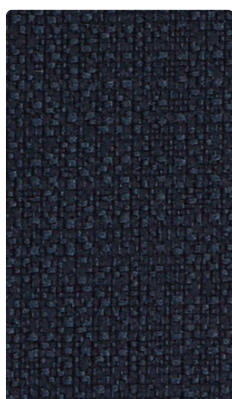
312-012 **Jonquil** (Nano-Tex® only)  
DB409-012 (Nano-Tex® + DuraBlock®)



312-027 **Parchment** (Nano-Tex® only)  
DB409-027 (Nano-Tex® + DuraBlock®)



312-009 **Paprika** (Nano-Tex® only)  
DB409-009 (Nano-Tex® + DuraBlock®)



312-024 **Marine** (Nano-Tex® only)  
DB409-024 (Nano-Tex® + DuraBlock®)



312-063 **Pear** (Nano-Tex® only)  
DB409-063 (Nano-Tex® + DuraBlock®)



312-000 **Mocha** (Nano-Tex® only)  
DB409-000 (Nano-Tex® + DuraBlock®)



**Application**  
Seating

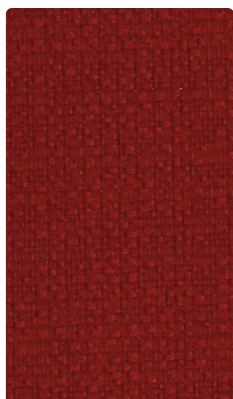
**Content**  
100% Polyester

**Width**  
54 inches

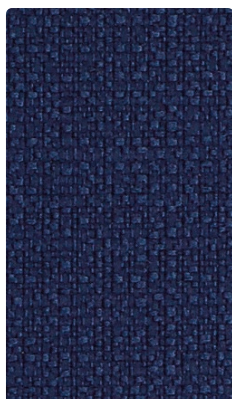
**Abrasion**  
Passes 288,000 Double Rubs

**Finish**  
Nano-Tex®

**Reduced Environmental Impact**  
GREENGUARD Gold Certified



312-001 **Crimson** (Nano-Tex® only)  
DB409-001 (Nano-Tex® + DuraBlock®)



312-004 **Royal** (Nano-Tex® only)  
DB409-004 (Nano-Tex® + DuraBlock®)



312-053 **Forest** (Nano-Tex® only)  
DB409-053 (Nano-Tex® + DuraBlock®)



312-026 **Charcoal** (Nano-Tex® only)  
DB409-026 (Nano-Tex® + DuraBlock®)



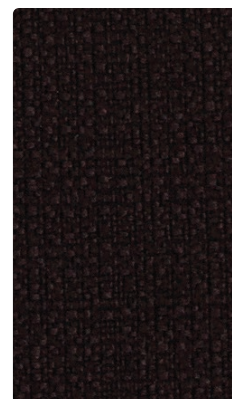
312-005 **Eggplant** (Nano-Tex® only)  
DB409-005 (Nano-Tex® + DuraBlock®)



312-034 **Indigo** (Nano-Tex® only)  
DB409-034 (Nano-Tex® + DuraBlock®)



312-016 **Sandstone** (Nano-Tex® only)  
DB409-016 (Nano-Tex® + DuraBlock®)



312-006 **Ebony** (Nano-Tex® only)  
DB409-006 (Nano-Tex® + DuraBlock®)

## TECHNICAL INFORMATION

Content: 100% Polyester Width: 54" Weight: 13 oz./linear yard	Backing: None (also available with DuraBlock®) Finish: Nano-Tex® Cleaning Code: WS	Approx. Repeat: None Directional: Yes Railroaded: No
---	--	--

PERFORMANCE (*Certifications Marks Owned by ACT.)	Test Method	Results
Surface Abrasion: Heavy Duty <b>A</b> *	ASTM D-3597 (Cotton Duck)	Passes 288,000 Double Rubs
Breaking Strength: <b>X</b> *	ASTM-D-5034	Warp 267 lbs / Fill 271 lbs
Seam Slippage: <b>X</b> *	ASTM-D-4034	Warp 35 lbs / Fill 47 lbs
Pilling Resistance: <b>X</b> *	ASTM D-3511	Class 4
Colorfastness to Crocking: <b>C</b> *	AATCC-8	Dry: Class 4 / Wet: Class 3
Colorfastness to Light: <b>S</b> *	AATCC-16E	Class 4 at 60 hours

Class in the colorfastness requirements is based on a numerical scale of 5 for negligible or no color transfer to 1 for very severe color change or color transfer.

## FLAMMABILITY

California Technical Bulletin 117-2013 NFPA 260 (Equivalent to UFAC)	Passes Passes
---	------------------

May comply with California Technical Bulletin 133 when combined with appropriate components.

## REDUCED ENVIRONMENTAL IMPACT

**GREENGUARD Gold Certified products are tested for low chemical emissions to standard UL 2818. For more information, visit [UL.com/gg](http://UL.com/gg).**

## CARE AND CLEANING INFORMATION

WS: Water/Solvent Cleaner – Spot clean, with a mild solvent, an upholstery shampoo, or the foam from a mild detergent. When using a solvent or dry cleaning product, follow instructions carefully and clean only in a well-ventilated room. Avoid any product that contains carbon tetrachloride or other toxic materials. With either method, pretest a small area before proceeding. Always rinse promptly with clean water.

## FEATURES AND BENEFITS OF NANO-TEX®

Spill/Stain Prevention	<ul style="list-style-type: none"> <li>Fabric aggressively repels liquids (liquid beads and rolls off)</li> <li>Liquids can be blotted off the fabric face preventing staining and penetration</li> <li>Helps prevent staining of fabric from dirt and spills, including hot coffee, mustard, salad dressing, blood, urine and iodine</li> <li>Can be cleaned with detergents, solvents or bleach (fabric appropriate)</li> </ul>
Performance	<ul style="list-style-type: none"> <li>Maintains natural hand</li> <li>Highly breathable</li> <li>Permanent</li> </ul>
Environmentally Friendly	<ul style="list-style-type: none"> <li><b>Nano-Tex® is an environmentally friendly chemistry that is recyclable</b></li> </ul>

## DURABLOCK® INFORMATION

**This pattern is stocked with DuraBlock® and can be ordered from inventory by the yard. Please use the DuraBlock® number below each sample on the face of this card for Nano-Tex® + DuraBlock®.**

Same "Features and Benefits" of Nano-Tex® plus the following:

Durable, Breathable Barrier	<ul style="list-style-type: none"> <li>Prevents liquid or contaminate from reaching cushion</li> <li>Breathability offers comfort for extended seating periods compared to vinyls and polyurethanes</li> <li>Leaves fabric soft and moldable for upholstery applications</li> </ul>
Environmentally Friendly	<ul style="list-style-type: none"> <li><b>100% antimony-free polyester is completely recyclable</b></li> </ul>

## ADDITIONAL INFORMATION

**Custom Capabilities:** All patterns can be custom colored. Minimum yardage applies.  
**Memo Samples:** Please keep this card intact. Individual memo samples can be ordered on our website or by contacting customer service.  
**Fabric Color Matching:** Mayer Fabrics always attempts to ship a satisfactory commercial match. Because of industry standard dye lot variation, colors may not match exactly.  
**Digital Swatch Card Color Matching:** Due to color variations on different monitors and color printers, actual swatch colors may vary slightly. Please request a memo sample from Mayer Fabrics to ensure proper color representation.  
**Specifications:** Specifications are correct at the time of printing. Current specifications are available on our website.  
**For information or assistance with products or services, call us at 800.428.4415 or refer to our website, [www.mayerfabrics.com](http://www.mayerfabrics.com)**

 **NANOTEX®**  **NANOTEX® + DuraBlock®**  
Nano-Tex® is a registered trademark of Nano-Tex®, Inc.



GSA Contract # GS-28F-0022P