

# SERENE

PC18-004 Slate

Privacy Curtain/Multi-Purpose

54% FR Polyester,  
46% Post-Consumer Recycled  
Polyester (23% from SEAQUAL®  
YARN)

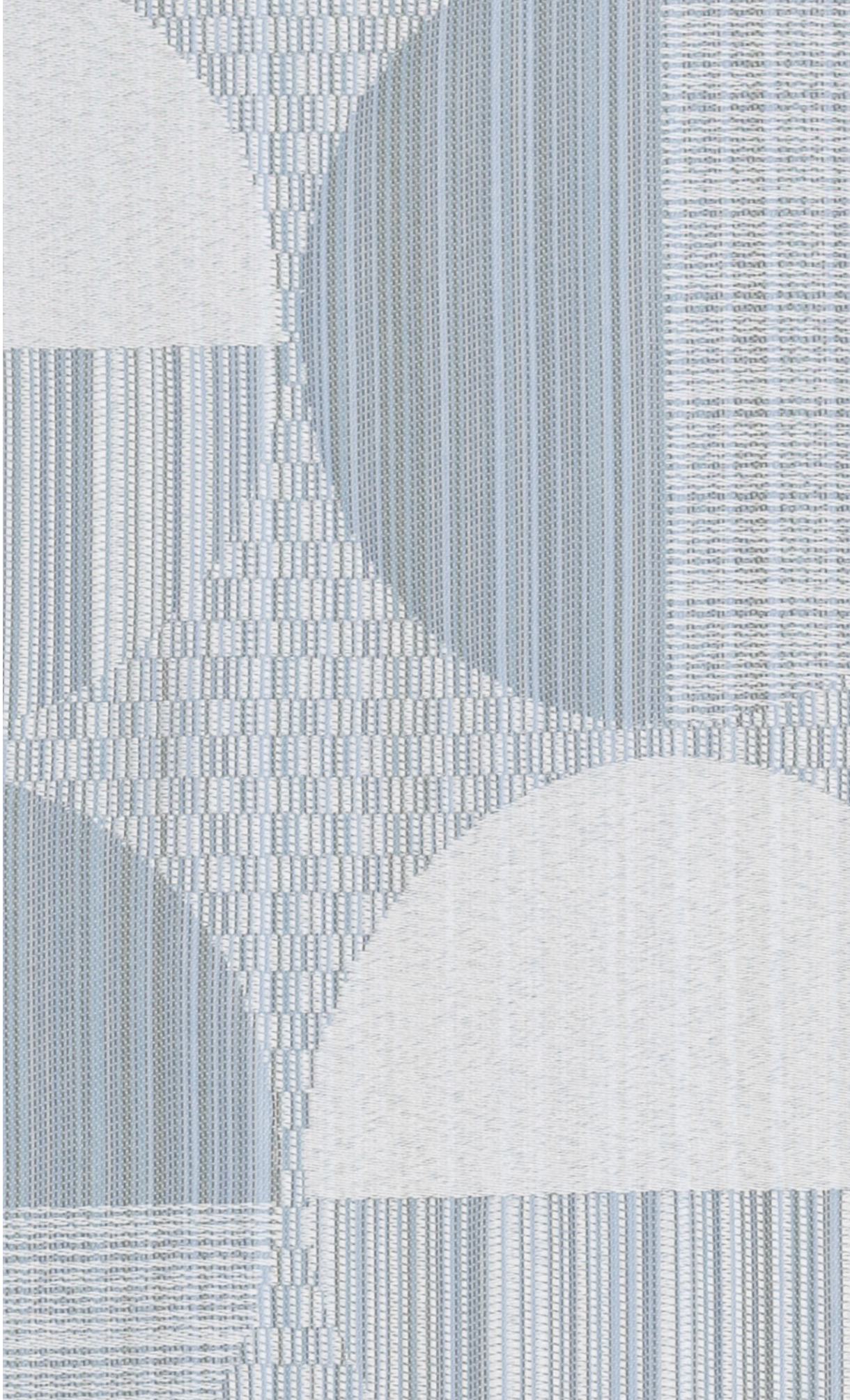
72 inches / 183 cm

GREENGUARD Gold Certified



**SEAQUAL**  
INITIATIVE

**MAYERFABRICS**





Approx. Repeat: 24.875 in/63.18 cm H, 22.75 in/57.79 cm V

Pattern is shown railroaded at approximately 75% scale

# SERENE



PC18-003 Spring



PC18-004 Slate



PC18-005 Plum



PC18-007 Sandstone



PC18-009 Terra

## TECHNICAL INFORMATION

Content: 54% FR Polyester, 46% Post-Consumer Recycled Polyester  
(23% from SEAQUAL® YARN)

Weight: 10.08 oz./linear yard / 312.51 g/lm

Finish: None

Width: 72 inches / 183 cm

Approx. Repeat: 24.875 in/63.18 cm H, 22.75 in/57.79 cm V

Directional: Yes

Shown Railroaded: Yes

## FLAMMABILITY

NFPA 701 Test Method 1



These fabrics meet or exceed these ACT performance guidelines.  
\*Certification Marks owned by ACT®

## REDUCED ENVIRONMENTAL IMPACT

This product is GREENGUARD Gold Certified for low chemical and particle emissions to UL standard UL 2818 and may contribute to LEED certification. For complete information visit [mayerfabrics.com](http://mayerfabrics.com).

No FR Additives No Antimicrobial/Antibacterial Additives PFAS Free

## CARE AND CLEANING INFORMATION

Launder: Machine wash to 160° F, tumble dry at 140° F, remove promptly.

WS: Water/Solvent

BC: Bleach Cleanable –

1 part bleach, 9 parts water = 10% bleach, 90% water solution.

## ADDITIONAL INFORMATION

Custom Colors: All patterns can be custom colored. Minimum yardage applies.

Warranty: Please refer to the Mayer website for warranty information by pattern.

Digital Swatch Card Color Matching: Due to color variations on different monitors and color printers, actual swatch colors may vary slightly. Please request a memo sample from Mayer Fabrics to ensure proper color representation.

# MAYER FABRICS



PC18CD ©2024 50324

T 800.428.4415 [mayerfabrics.com](http://mayerfabrics.com)  
500 S. Kitley Ave. Indianapolis, IN 46219