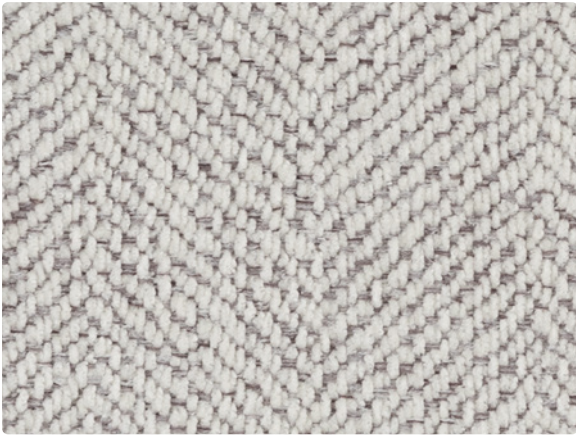


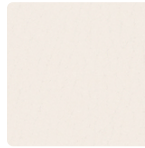


CAMBRIDGE COORDINATES

MAYERFABRICS



ADLER
640-007 Marble



DURANGO
DU-017 Alabaster



DURANGO
DU-007 Natural



OMEGA
OM-002 Khaki



SEVILLE
642-007 Linen



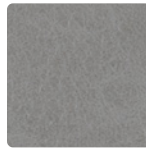
LANCASTER
332-007 Alabaster



OMEGA
OM-017 Bone



OMEGA
OM-027 Stone



OMEGA
OM-006 Quarry



LANCASTER
332-006 Mineral



DELMAR
641-016 Pebble



DELMAR
641-007 Beige



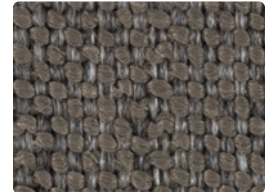
SEVILLE
642-017 Almond



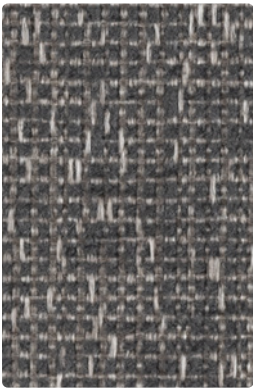
SEVILLE
642-006 Tin



DELMAR
641-000 Coffee



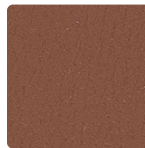
LANCASTER
332-000 Driftwood



SEVILLE
642-016 Smoke



LANCASTER
332-010 Truffle



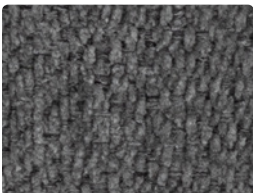
DURANGO
DU-010 Bombay



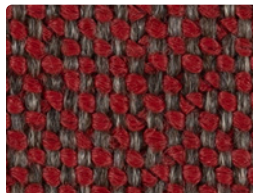
DURANGO
DU-000 Cocoa



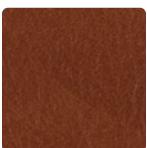
OMEGA
OM-050 Truffle



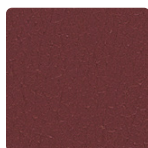
ADLER
640-016 Slate



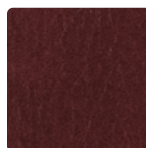
LANCASTER
332-001 Cardinal



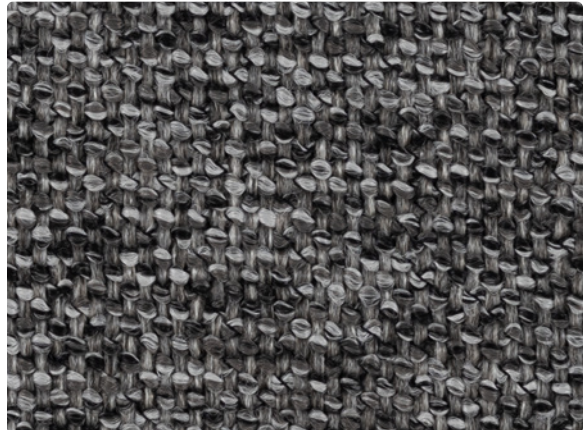
OMEGA
OM-009 Clay



DURANGO
DU-011 Chili

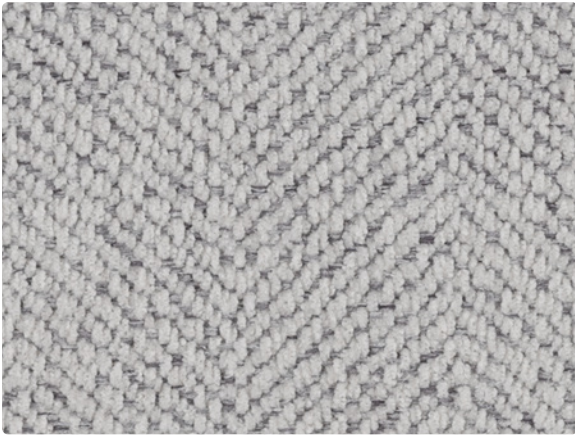


OMEGA
OM-001 Oxblood

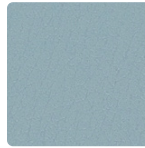


LANCASTER
332-016 Masonry

Additional colors are available. Please refer to the Mayer Fabrics website.



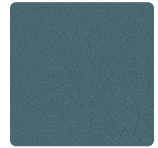
ADLER
640-006 Alloy



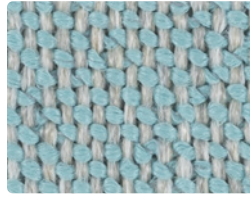
DURANGO
DU-014 Cyan



OMEGA
OM-004 Bluestone



DURANGO
DU-024 Aegean



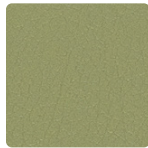
LANCASTER
332-004 Sky



SEVILLE
642-004 Dew



OMEGA
OM-007 Ivory



DURANGO
DU-023 Jade



OMEGA
OM-003 Hunter



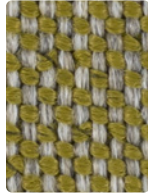
DELMAR
641-004 Water



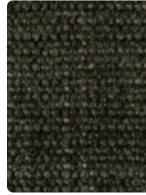
ADLER
640-004 Iceberg



SEVILLE
642-003 Spring



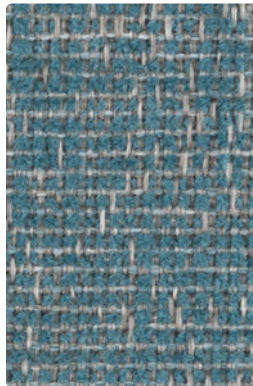
LANCASTER
332-003 Olive



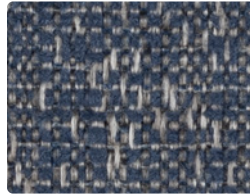
DELMAR
641-003 Pine



LANCASTER
332-014 Ocean



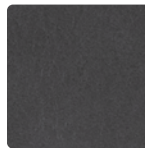
SEVILLE
642-014 Sea



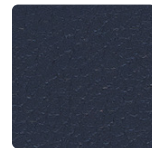
SEVILLE
642-024 River



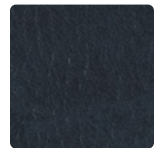
DELMAR
641-014 Marine



OMEGA
OM-016 Granite



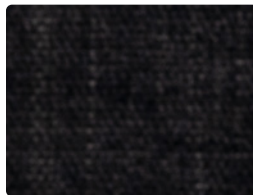
DURANGO
DU-004 Sapphire



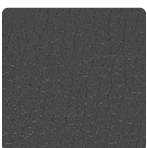
OMEGA
OM-014 Midnight



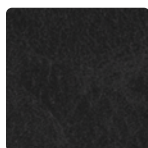
ADLER
640-014 Lake



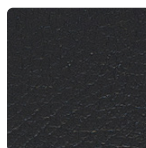
DELMAR
641-006 Black



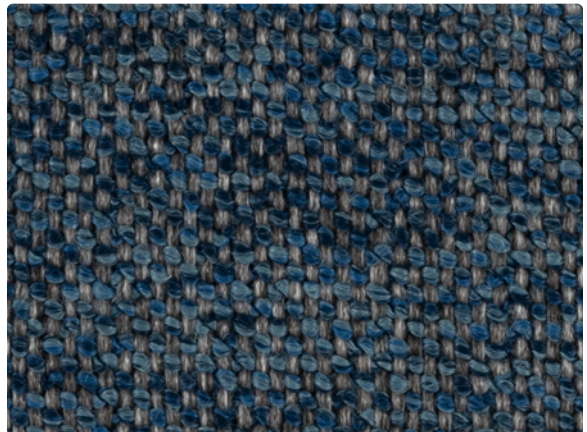
DURANGO
DU-016 Char



OMEGA
OM-026 Onyx



DURANGO
DU-006 Black



LANCASTER
332-024 Denim

Additional colors are available. Please refer to the Mayer Fabrics website.

TECHNICAL INFORMATION

Cambridge Coordinates

| Pattern 54" | Content and Backing | Certifications | Weight/ Linear Yd. | Pattern Repeat | Finish | Abrasion Wyzenbeek | Light- Fastness | Flammability | Cleaning Code |
|---|--|--------------------|-----------------------|-----------------------|--|---------------------------|--------------------|---|------------------|
| ADLER <i>Directional Railroaded</i> | 100% Polyester Backing: Polyester | GREENGUARD Gold | 16.5 oz. | 0.625" H, 1.875" V | Stain Repellent - PFAS Free | 60,000^ Double Rubs | 40 hours | Cal. 117-2013 NFPA 260/UFAC Class 1 | S |
| DELMAR <i>Directional</i> | 100% Polyester Backing: Acrylic | GREENGUARD Gold | 19.7 oz. | None | Stain Repellent - PFAS Free | 60,000^ Double Rubs | 40 hours | Cal. 117-2013 NFPA 260/UFAC Class 1 | S |
| DURANGO™ | 78% Vinyl - Phthalate Free face, 22% Polyester backing | GREENGUARD Gold | 30 oz. | None | Soil & Stain Resistant Top Coat with Ink Resistant Technology | 1,000,000^ Double Rubs | 650 hours | Cal. 117-2013 NFPA 260/UFAC Class 1 BIFMA | BC, CFC |
| LANCASTER <i>Directional</i> | 97% Solution-Dyed Olefin, 3% Solution-Dyed Polyester Backing: Acrylic | GREENGUARD Gold | 21.9 oz. | 0.188" H, 0.188" V | Inherently Cleanable | 50,000^ Double Rubs | 40 hours | Cal. 117-2013 NFPA 260/UFAC Class 1 | WS, BC, IC |
| OMEGA | 43% Polyurethane Polycarbonate face, 57% Polyester backing | GREENGUARD Gold | 25.4 oz. | None | WRITE AWAY® - Soil & Stain Resistant Top Coat with Ink Resistant Technology | 250,000^ Double Rubs | 200 hours | Cal. 117-2013 NFPA 260/UFAC Class 1 | WS, BC, CFC |
| SEVILLE <i>Directional</i> | 67% Solution-Dyed Olefin, 33% Solution-Dyed Polyester Backing: Acrylic | GREENGUARD Gold | 12.5 oz. | None | Inherently Cleanable | 50,000^ Double Rubs | 40 hours | Cal. 117-2013 NFPA 260/UFAC Class 1 | WS, BC, IC |

REDUCED ENVIRONMENTAL IMPACT

These products are GREENGUARD Gold Certified for low chemical and particle emissions to UL standard UL 2818 and may contribute to LEED certification.

No FR Additives No Antimicrobial/Antibacterial Additives PFAS Free

CARE AND CLEANING INFORMATION

S: Solvent WS: Water/Solvent Cleaner IC: Inherently Cleanable

CFC: Coated Fabrics Cleaning – Refer to Mayer website for complete cleaning info.

Bleach Cleanable – 1 part bleach, 9 parts water = 10% bleach, 90% water solution. **Do not clean/disinfect fabric for longer than 10 minutes using the 10% bleach solution. Always rinse promptly with clean water after applying the bleach solution. Failure to do so will void any and all warranties.**

DYE TRANSFER DISCLAIMER

Certain clothing and accessory dyes (such as those used on denim jeans) may migrate to lighter colors. This phenomenon is increased by humidity and temperature and is irreversible. Mayer Fabrics will not assume responsibility for dye transfer caused by external contaminants. Please check compatibility when using this product in combination with painted or varnished surfaces.

ADDITIONAL INFORMATION

^Abrasion test results exceeding ACT Performance Guidelines are not an indicator of product lifespan. Multiple factors affect fabric durability and appearance retention.

Warranty: Please refer to the Mayer website for warranty information by pattern.

Custom Colors: All patterns can be custom colored. Minimum yardage applies.

Digital Swatch Card Color Matching: Due to color variations on different monitors and color printers, actual swatch colors may vary slightly. Please request a memo sample from Mayer Fabrics to ensure proper color representation.

Complete and current product information available at mayerfabrics.com.



These fabrics meet or exceed these ACT performance guidelines.

*Certification Marks owned by ACT®

MAYER FABRICS

