

Coated Fabric

SILVERWEAVE



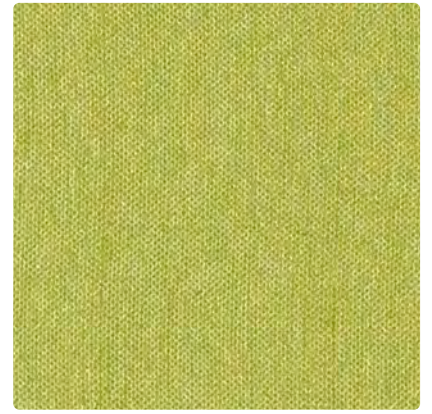
SW-039
Bittersweet



SW-012
Daylily



SW-063
Pear



SW-053
Spring



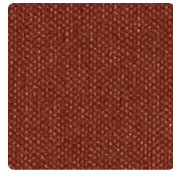
SW-019
Tangerine



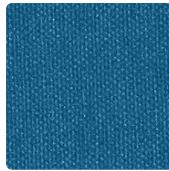
SW-022
Curry



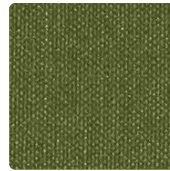
SW-043
Lime



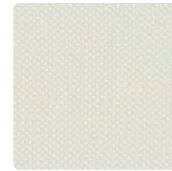
SW-029
Amber



SW-044
Calypso



SW-003
Jade



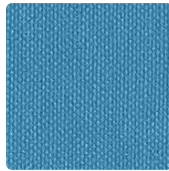
SW-027
Ivory



SW-037
Alabaster



SW-009
Cayenne



SW-034
Cyan



SW-013
Willow



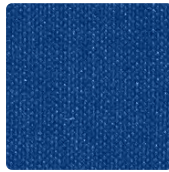
SW-007
Camel



SW-030
Cliff



SW-011
Poppy



SW-024
Cobalt



SW-083
Olive



SW-002
Sienna



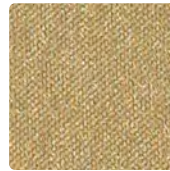
SW-020
Mica



SW-001
Cranberry



SW-004
Indigo



SW-073
Oregano



SW-010
Walnut



SW-036
Pewter



SW-008
Orchid



SW-016
Cadet



SW-033
Lichen



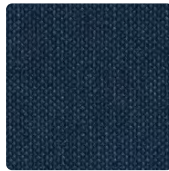
SW-017
Doe



SW-026
Zinc



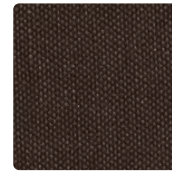
SW-005
Eggplant



SW-014
Baltic



SW-023
Moss



SW-000
Cocoa



SW-006
Graphite

Upholstery
81% Vinyl face,
19% Hi-Loft Polyester backing
54 inches / 137 cm
Passes 930,000 Double Rubs
Soil and Stain Resistant Top Coat
GREENGUARD Certified

SILVERWEAVE

TECHNICAL INFORMATION

Application: Upholstery

Content: 81% Vinyl face, 19% Hi-Loft Polyester backing

Weight: 30 oz./linear yard / 930.10 g/lm

Width: 54 inches / 137 cm

Finish: Soil and Stain Resistant Top Coat

Approx. Repeat: None

Directional: Yes

Shown Railroaded: No

PERFORMANCE

Abrasion: Passes 930,000 Double Rubs
(Wyzenbeek/Cotton Duck)

Abrasion test results exceeding ACT Performance Guidelines are not an indicator of product lifespan. Multiple factors affect durability and appearance retention.

Crocking: Dry: Grade 4 min / Wet: Grade 4 min

Colorfastness to Light: Grade 5 at 1000 hours

FLAMMABILITY

California Technical Bulletin 117-2013
NFPA 260/UFAC Class 1

REDUCED ENVIRONMENTAL IMPACT

This product is GREENGUARD Certified for low chemical and particle emissions to UL standard UL 2818 and may contribute to LEED certification. For complete information visit mayerfabrics.com.

No FR Additives.

CLEANING INFORMATION

BC: Bleach Cleanable –

1 part bleach, 9 parts water = 10% bleach, 90% water solution.

CFC: Coated Fabrics Cleaning – Refer to Mayer website for complete cleaning info.

DYE TRANSFER DISCLAIMER

Certain clothing and accessory dyes (such as those used on denim jeans) may migrate to lighter colors. This phenomenon is increased by humidity and temperature and is irreversible. Mayer Fabrics will not assume responsibility for dye transfer caused by external contaminants. Please check compatibility when using this product in combination with painted or varnished surfaces.

ADDITIONAL INFORMATION

Custom Colors: All patterns can be custom colored. Minimum yardage applies.

Warranty: Please refer to the Mayer website for warranty information by pattern.

Digital Swatch Card Color Matching: Due to color variations on different monitors and color printers, actual swatch colors may vary slightly. Please request a memo sample from Mayer Fabrics to ensure proper color representation.

Complete and current product information available at mayerfabrics.com.



 **MAYERFABRICS**



SW2CD ©2009 50821

T 800.428.4415 mayerfabrics.com
500 S. Kitley Ave. Indianapolis, IN 46219