

# SPOKES

---

Upholstery Seating



**MAYER**FABRICS

# Upholstery Seating



This collection was inspired by Vollis Simpson in support of the Vollis Simpson Whirligig Park & Museum. Mayer Fabrics will donate 2% of all sales to the Vollis Simpson Whirligig Park & Museum.



**Application**  
Upholstery Seating

**Content**  
63% Sunbrella® Solution-Dyed Acrylic,  
37% Sunbrella® Solution-Dyed Polyester

**Width**  
54 inches

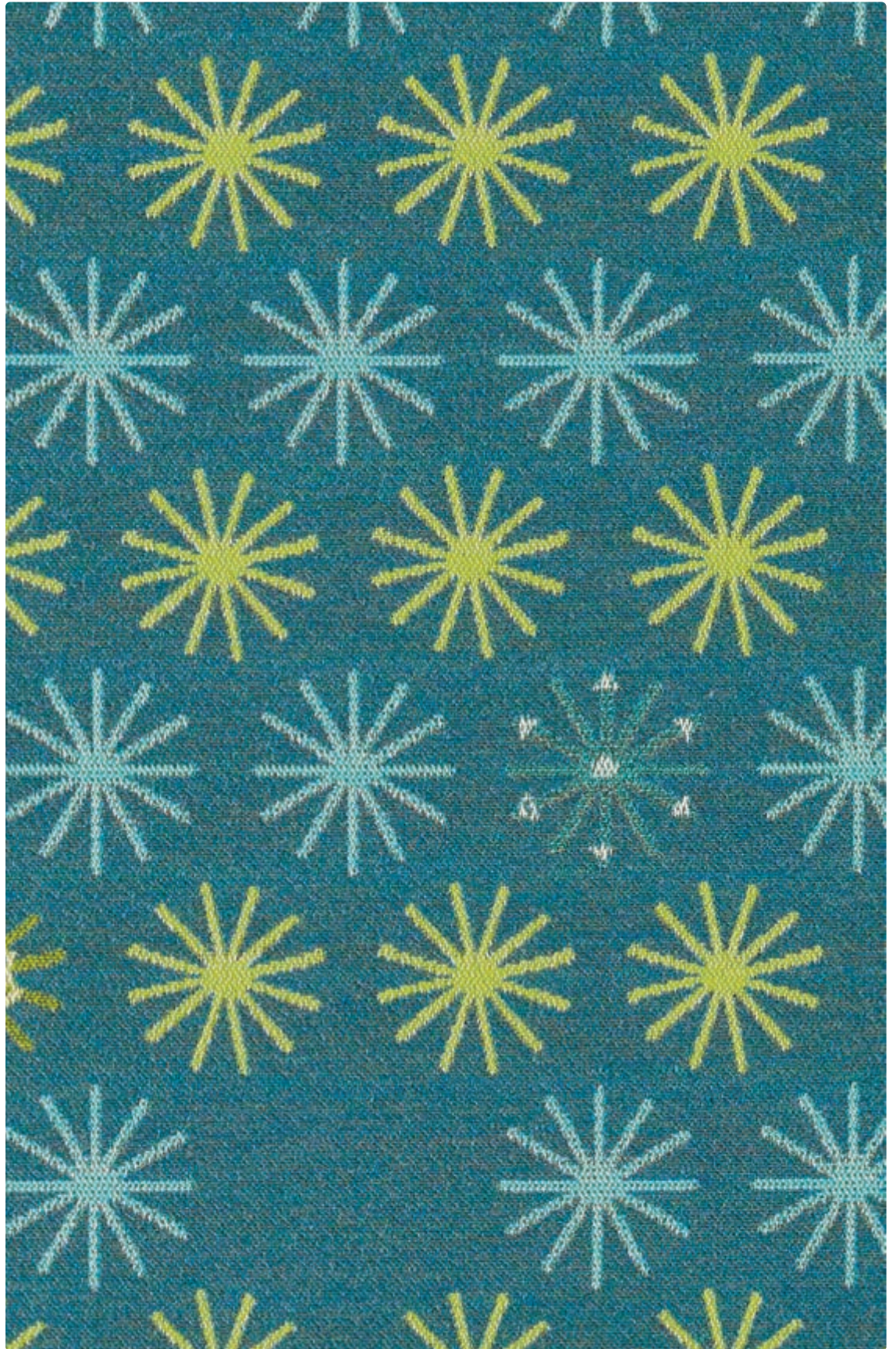
**Abrasion** (Wyzenbeek/Cotton Duck)  
Passes 100,000 Double Rubs

**Finish**  
Liquid and Stain Repel

**Reduced Environmental Impact**  
GREENGUARD Gold Certified



435-004  
Grotto



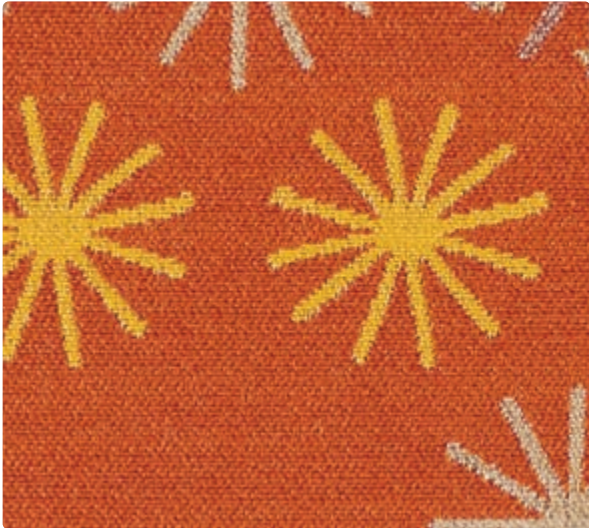




435-002  
Goldenrod



435-007  
Quartz



435-009  
Sunset



435-016  
Twilight



435-000  
Mist



435-006  
Meteor



This collection was inspired by Vollis Simpson in support of the Vollis Simpson Whirligig Park & Museum. Mayer Fabrics will donate 2% of all sales to the Vollis Simpson Whirligig Park & Museum.

**TECHNICAL INFORMATION**

Content: 63% Sunbrella® Solution-Dyed Acrylic, 37% Sunbrella® Solution-Dyed Polyester		
Width: 54"	Weight: 14.96 oz./linear yard	
Backing: None	Finish: Liquid and Stain Repel	
Approx. Repeat: 28.4" H, 24.89" V Random Match	Directional: Yes	Railroaded: No

**PERFORMANCE**

Surface Abrasion: Heavy Duty ASTM D 4157  
(Wyzenbeek/Cotton Duck)

**Results**

Passes 100,000 Double Rubs

Warranty	5 Years
Pilling Resistance ASTM D 3511	Class 5
Colorfastness to Crocking AATCC 8	Dry: Class 4 min / Wet: Class 4 min
Colorfastness to Light AATCC 16E SAE J 2527	Class 4 at 2000 hours Class 4 min at 1500 KJ

**FLAMMABILITY**

California Technical Bulletin 117-2013  
NFPA 260/UFAC Class 1  
May comply with California Technical Bulletin 133 when combined with appropriate components.

**REDUCED ENVIRONMENTAL IMPACT**

This product is GREENGUARD Gold Certified for low chemical and particle emissions to UL standard UL 2818 and may contribute to LEED certification. For complete information visit [mayerfabrics.com](http://mayerfabrics.com) and [UL.com/gg](http://UL.com/gg).



The Facts icon indicates that a textile has been evaluated based on the requirements of the multi-attribute sustainability standard NSF/ANSI 336 through an independent third-party certification body authorized by the Association for Contract Textiles.

**FINISH OPTIONS**

Mayer Barrier – Liquid, fluid barrier. Available for 10 yard minimums. Call for Pricing.

**CLEANING INFORMATION**

WS: Water/Solvent Cleaner

BC: Bleach Cleanable – 1 part bleach, 9 parts water = 10% bleach, 90% water solution. Do not clean/disinfect fabric for longer than 10 minutes using the 10% bleach solution. Always rinse promptly with clean water after applying the bleach solution. Failure to do so will void any and all warranties.

**ADDITIONAL INFORMATION**

**Custom Capabilities:** All patterns can be custom colored. Minimum yardage applies.

**Digital Swatch Card Color Matching:** Due to color variations on different monitors and color printers, actual swatch colors may vary slightly. Please request a memo sample from Mayer Fabrics to ensure proper color representation.

**Specifications:** Specifications are correct at the time of printing. Current specifications are available on our website.



This fabric meets or exceeds these ACT performance guidelines. \*Certification Marks owned by ACT\*



CONTRACT

Sunbrella® is a registered trademark of Glen Raven, Inc.



SPOKES – Approx. Repeat: 28.4" H, 24.89" V Random Match



MAYERFABRICS