

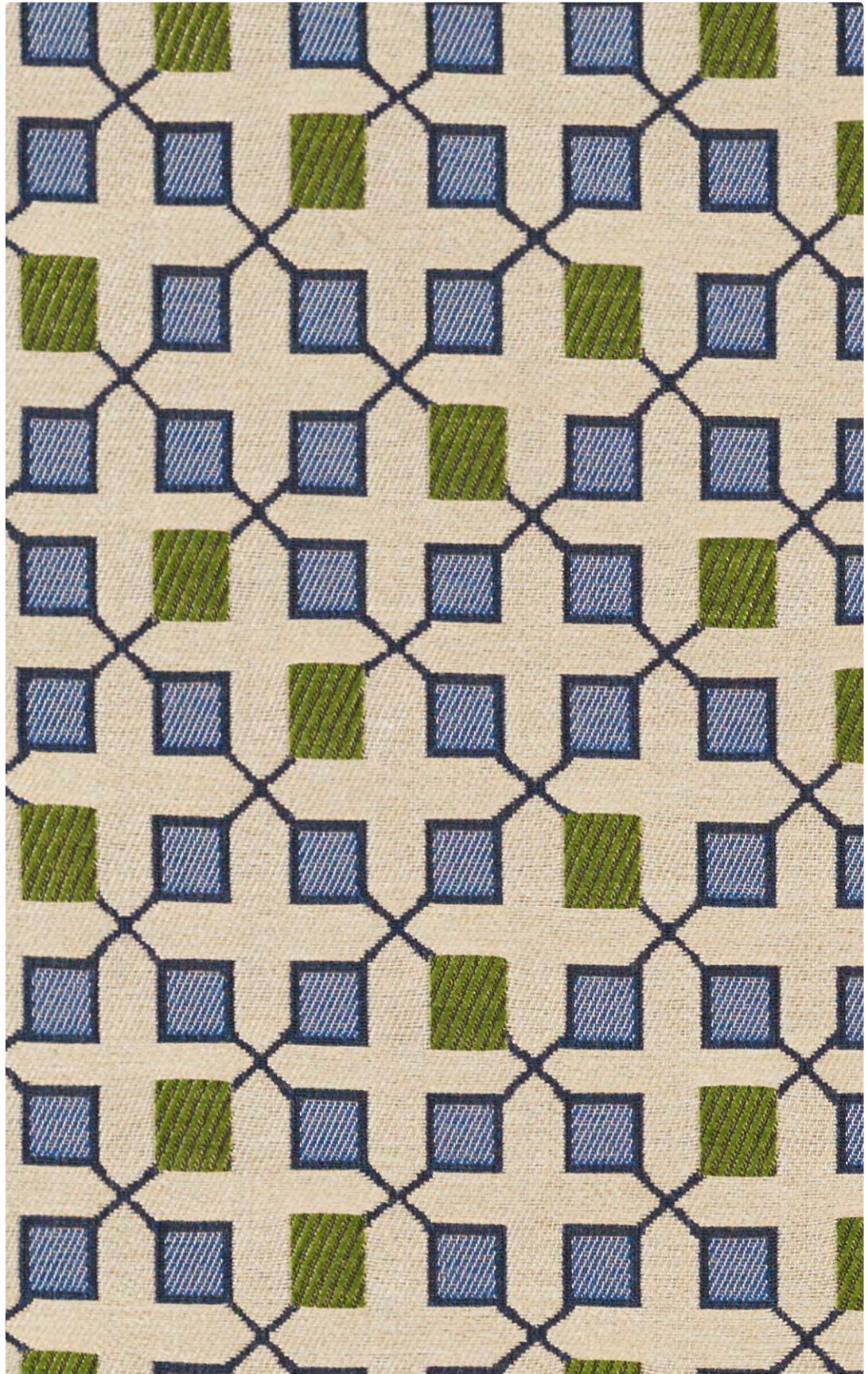
SUNA

Upholstery Seating



MAYERFABRICS

Upholstery Seating



Application
Upholstery Seating

Content
80% Solution-Dyed Recycled
Nylon, 20% Solution-Dyed Nylon

Width
54 inches

Abrasion (Wyzenbeek/Cotton Duck)
Passes 150,000 Double Rubs

Finish
Stain Repellent – PFOA &
PFOC Free

Reduced Environmental Impact
GREENGUARD Gold Certified

437-014
Niagara



437-007
Chamois



437-009
Mandarin



437-003
Leaf



437-001
Vermillion



437-004
Denim



437-006
Coal

TECHNICAL INFORMATIONContent: **80% Solution-Dyed Pre-Consumer Recycled Nylon, 20% Solution-Dyed Nylon**

Width: 54"

Backing: Acrylic

Approx. Repeat: 3.688" H, 7" V

Weight: 17.14 oz./linear yard

Finish: Stain Repellent – PFOA & PFOC Free

Directional: Yes

Railroaded: No

PERFORMANCESurface Abrasion: Heavy Duty ASTM D 4157
(Wyzenbeek/Cotton Duck)

Pilling Resistance ASTM D 3511

Colorfastness to Crocking AATCC-8

Colorfastness to Light AATCC 16

ResultsPasses 150,000 Double Rubs
appearance retention, including end-user application and proper maintenance. Wyzenbeek results above 100,000 double rubs have not been shown to be a reliable indicator of increased fabric lifespan.

Class 4

Dry: Class 4 / Wet: Class 3

Class 5 at 200 hours

FLAMMABILITY

California Technical Bulletin 117-2013

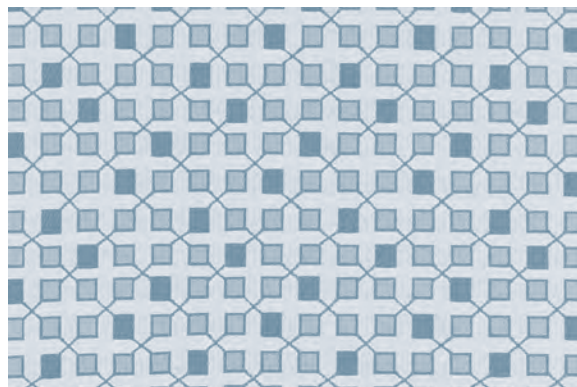
NFPA 260/UFAC Class 1

May comply with California Technical Bulletin 133 when combined with appropriate components.

REDUCED ENVIRONMENTAL IMPACT**This product is GREENGUARD Gold Certified for low chemical and particle emissions to UL standard UL 2818 and may contribute to LEED certification. For complete information visit mayerfabrics.com and UL.com/gg.****CLEANING INFORMATION**

WS: Water/Solvent Cleaner

BC: Bleach Cleanable – 1 part bleach, 9 parts water = 10% bleach, 90% water solution. Do not clean/disinfect fabric for longer than 10 minutes using the 10% bleach solution. Always rinse promptly with clean water after applying the bleach solution. Failure to do so will void any and all warranties.

ADDITIONAL INFORMATION**Custom Capabilities:** All patterns can be custom colored. Minimum yardage applies.**Digital Swatch Card Color Matching:** Due to color variations on different monitors and color printers, actual swatch colors may vary slightly. Please request a memo sample from Mayer Fabrics to ensure proper color representation.**Specifications:** Specifications are correct at the time of printing. Current specifications are available on our website.This fabric meets or exceeds these ACT performance guidelines.
*Certification Marks owned by ACT®Water and Stain
Repellent Finish

SUNA – Approx. Repeat: 3.688" H, 7" V

**MAYERFABRICS**