



TE-007  
Alabaster



TE-003  
Emerald



TE-017  
Linen



TE-027  
Glacier



TE-013  
Bamboo



TE-026  
Storm



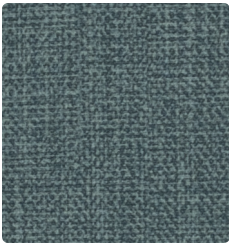
TE-030  
Khaki



TE-002  
Goldfinch



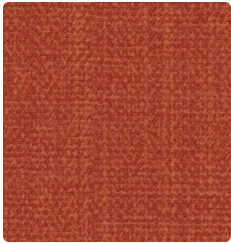
TE-023  
Pesto



TE-034  
Tradewind



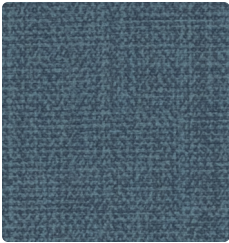
TE-020  
Cobblestone



TE-009  
Bittersweet



TE-033  
Hunter



TE-024  
Blue Jeans



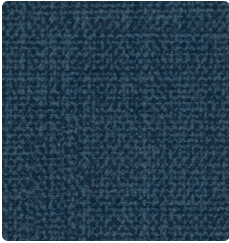
TE-010  
Branch



TE-001  
Garnet



TE-016  
Caviar



TE-014  
Inky Blue



TE-000  
Allspice



TE-005  
Merlot



TE-006  
Charcoal



TE-004  
Naval

Upholstery  
80% Hyphyn™ Biodegradable Vinyl  
face, 20% Hyphyn™ Biodegradable  
Polyester backing  
54 inches / 137 cm  
Exceeds 250,000 Double Rubs  
Soil & Stain Resistant Top Coat  
GREENGUARD Gold Certified

# TELLUS

## TECHNICAL INFORMATION

Application: Upholstery

Content: 80% Hyphyn™ Biodegradable Vinyl face,  
20% Hyphyn™ Biodegradable Polyester backing

Weight: 31 oz./linear yard / 961.11 g/lm

Width: 54 inches / 137 cm

Finish: Soil & Stain Resistant Top Coat

Approx. Repeat: None

Directional: Yes

Shown Railroaded: No

## PERFORMANCE

Abrasion: Exceeds 250,000 Double Rubs  
(Wyzenbeek/Cotton Duck)  
Abrasion test results exceeding ACT Performance Guidelines are not an indicator of product lifespan. Multiple factors affect durability and appearance retention.

Crocking: Dry: Grade 5 / Wet: Grade 5

Colorfastness to Light: Grade 4.5 at 300 hours

## FLAMMABILITY

California Technical Bulletin 117-2013  
NFPA 260/UFAC Class 1  
FMVSS302

## REDUCED ENVIRONMENTAL IMPACT

Hyphyn™ Vinyl biodegrades over 90% within 24 months in landfill conditions, per ASTM D5511 testing. Its patented enzyme system activates only in anaerobic environments.

This product is GREENGUARD Gold Certified for low chemical and particle emissions to UL standard UL 2818 and may contribute to LEED certification. For complete information visit [mayerfabrics.com](http://mayerfabrics.com).

No FR Additives   No Antimicrobial/Antibacterial Additives   PFAS Free

## CLEANING INFORMATION

WS: Water/Solvent Cleaner

BC: Bleach Cleanable –

1 part bleach, 9 parts water = 10% bleach, 90% water solution.

CFC: Coated Fabrics Cleaning – Refer to Mayer website for complete cleaning info.

## DYE TRANSFER DISCLAIMER

Certain clothing and accessory dyes (such as those used on denim jeans) may migrate to lighter colors. This phenomenon is increased by humidity and temperature and is irreversible. Mayer Fabrics will not assume responsibility for dye transfer caused by external contaminants. Please check compatibility when using this product in combination with painted or varnished surfaces.

## ADDITIONAL INFORMATION

Custom Colors: All patterns can be custom colored. Minimum yardage applies.  
Warranty: Please refer to the Mayer website for warranty information by pattern.  
Digital Swatch Card Color Matching: Due to color variations on different monitors and color printers, actual swatch colors may vary slightly. Please request a memo sample from Mayer Fabrics to ensure proper color representation.  
Complete and current product information available at [mayerfabrics.com](http://mayerfabrics.com).



# MAYERFABRICS



TECD ©2025 50625

T 800.428.4415 [mayerfabrics.com](http://mayerfabrics.com)  
500 S. Kitley Ave. Indianapolis, IN 46219