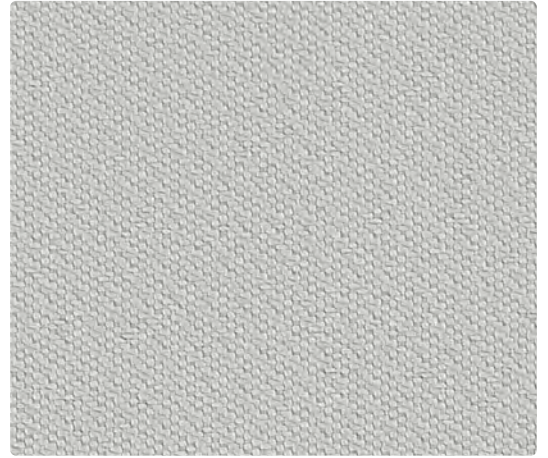




Alabaster
423-037



Cafe Au Lait
423-007



Dove
423-026



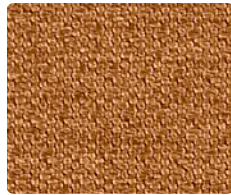
Zinc
423-027



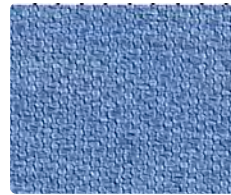
Banana
423-002



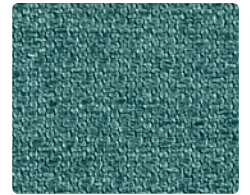
Stone
423-017



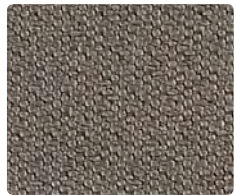
Tobacco
423-019



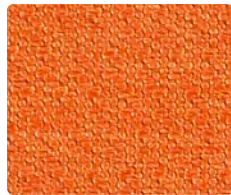
Slate
423-024



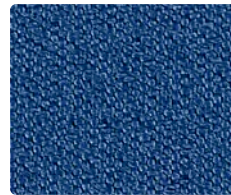
Teal
423-044



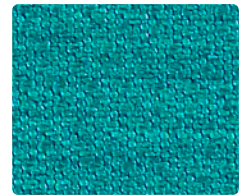
Mocha
423-010



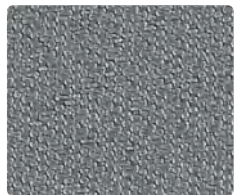
Mango
423-009



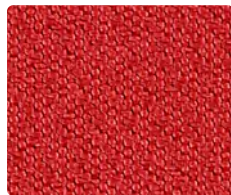
Indigo
423-014



Peacock
423-034



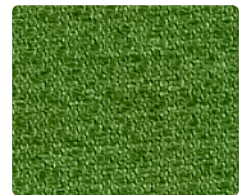
Charcoal
423-016



Lipstick
423-001



Navy
423-004



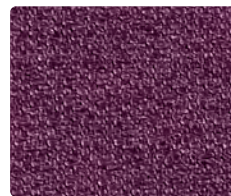
Grass
423-003



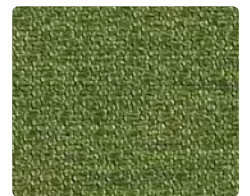
Onyx
423-006



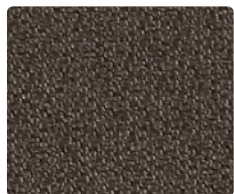
Rouge
423-011



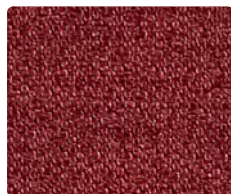
Aubergine
423-005



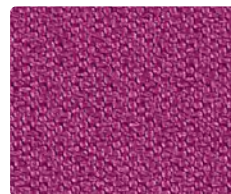
Grove
423-023



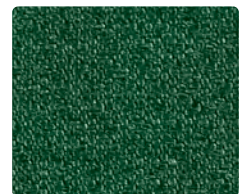
Espresso
423-000



Port
423-008



Raspberry
423-015



Evergreen
423-013

Application
Multi-use for upholstery, panels, wrapped walls, and acoustic

Content
75% Recycled Polyester,
25% Polyester

Width
54 inches

Abrasion (Wyzenbeek/Cotton Duck)
Passes 150,000 Double Rubs

Finish
Stain Repellent -
PFOA & PFOS Free

Reduced Environmental Impact
GREENGUARD Gold Certified

THEORY10

Multi-use for upholstery, panels, wrapped walls, and acoustic

TECHNICAL INFORMATION

Content: **75% Post-Consumer Recycled Polyester**, 25% Polyester
Width: 54"
Backing: Latex
Approx. Repeat: 0.17" H, 0.39" V

Weight: 14.5 oz./linear yard
Finish: Stain Repellent - PFOA & PFOS Free
Directional: Yes
Railroaded: No

PERFORMANCE

Surface Abrasion: Heavy Duty ASTM D 4157
(Wyzenbeek/Cotton Duck)

Pilling Resistance ASTM D 3511
Colorfastness to Crocking AATCC 8
Colorfastness to Light AATCC 16E

Results

Passes 150,000 Double Rubs
Multiple factors affect fabric durability and appearance retention, including end-user application and proper maintenance. Wyzenbeek results above 100,000 double rubs have not been shown to be a reliable indicator of increased fabric lifespan.

Class 4
Dry: Grade 4 / Wet: Grade 4
Grade 4 at 40 hours

FLAMMABILITY

California Technical Bulletin 117-2013
NFPA 260/UFAC Class 1
ASTM E84 (Unadhered) Class 1 or A

REDUCED ENVIRONMENTAL IMPACT

This product is **GREENGUARD Gold Certified for low chemical and particle emissions to UL standard UL 2818 and may contribute to LEED certification.** For complete information visit mayerfabrics.com and UL.com/gg.

No FR/Antimicrobial/Antibacterial additives.

TEN YEAR WARRANTY

THEORY10 is covered by a 10-year limited performance warranty from the date of installation, when used for seating applications. THEORY10 is warranted against wear through (i.e. the complete deterioration of the fabric's structure in a particular area) if properly installed and maintained. This warranty does not cover damage due to abuse, misuse, vandalism, inadequate padding or abrasion from other seating components or furniture, use of improper cleaning agents or methods and use subsequent to ownership by the original purchaser. Mayer Fabrics can provide a copy of the warranty.

If THEORY10 fails to perform during the 10-year warranty period, the affected area of fabric will be repaired or replaced including labor and materials upon written request of the customer.

Except as expressly provided herein, Mayer Fabrics makes no representations or warranties, express or implied, including, without limitation, any warranty of merchantability or fitness of its products for any particular purpose, and hereby disclaim the same.

CLEANING INFORMATION

WS: Water/Solvent Cleaner

DYE TRANSFER DISCLAIMER

Certain clothing and accessory dyes (such as those used on denim jeans) may migrate to lighter colors. This phenomenon is increased by humidity and temperature and is irreversible. Mayer Fabrics will not assume responsibility for dye transfer caused by external contaminants. Please check compatibility when using this product in combination with painted or varnished surfaces.

ADDITIONAL INFORMATION

Custom Capabilities: All patterns can be custom colored. Minimum yardage applies.

Specifications: Specifications are correct at the time of printing. Current specifications are available on our website.

Digital Swatch Card Color Matching: Due to color variations on different monitors and color printers, actual swatch colors may vary slightly. Please request a memo sample from Mayer Fabrics to ensure proper color representation.



This fabric meets or exceeds these ACT performance guidelines.
*Certification Marks owned by ACT®



Water and Stain Repellent Finish



This 100% polyester fabric is included in the Underwriter's Laboratory Fabric Recognition Program. Additional testing of this U.L. recognized component is not required on approved panels from participating manufacturers.



MAYERFABRICS