

TRANQUILITY

PC19-004 Lake

Privacy Curtain/Multi-Purpose

54% FR Polyester,
46% Post-Consumer Recycled
Polyester (23% from SEAQUAL®
YARN)

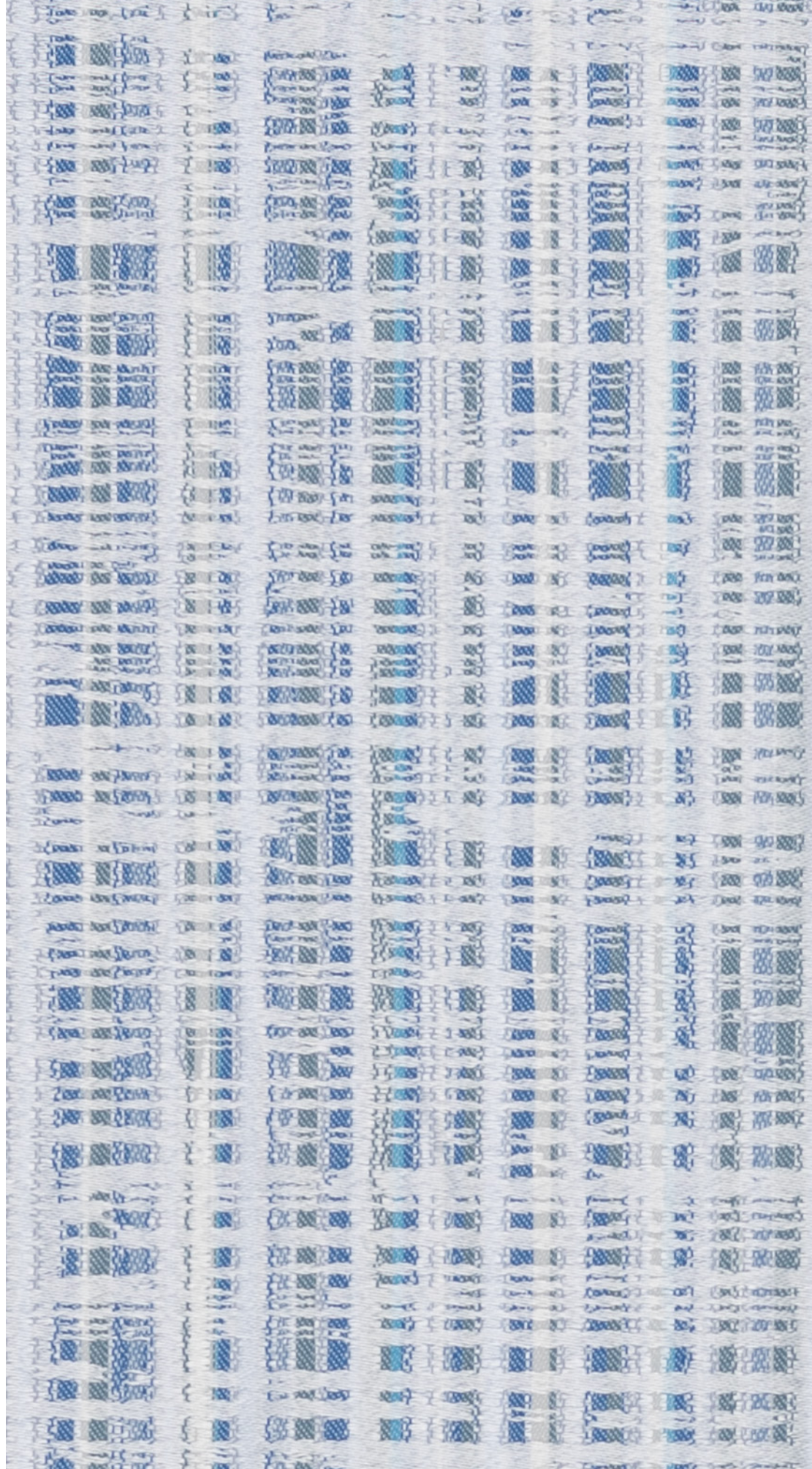
72 inches / 183 cm

GREENGUARD Gold Certified

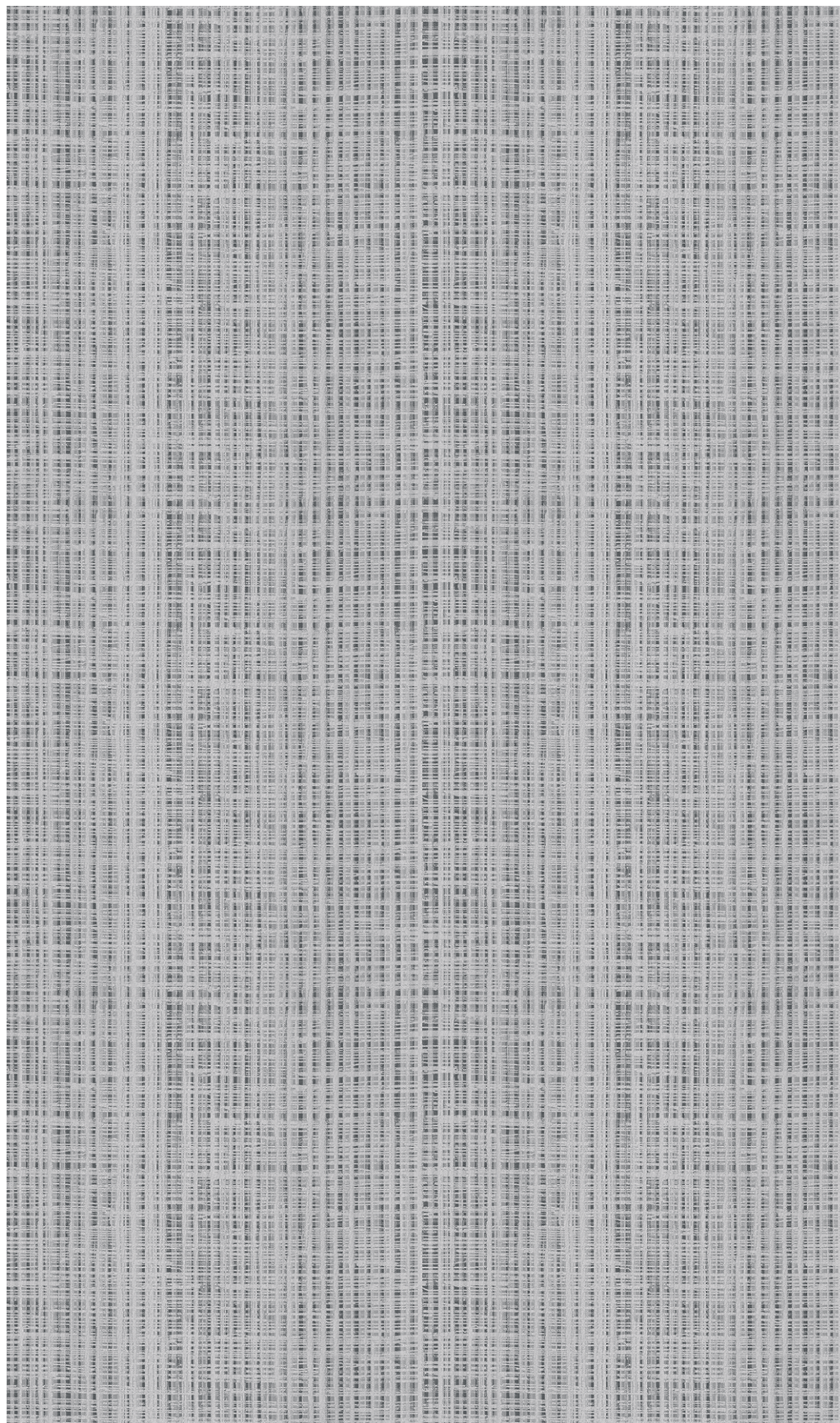


SEAQUAL
INITIATIVE

MAYERFABRICS



TRANQUILITY



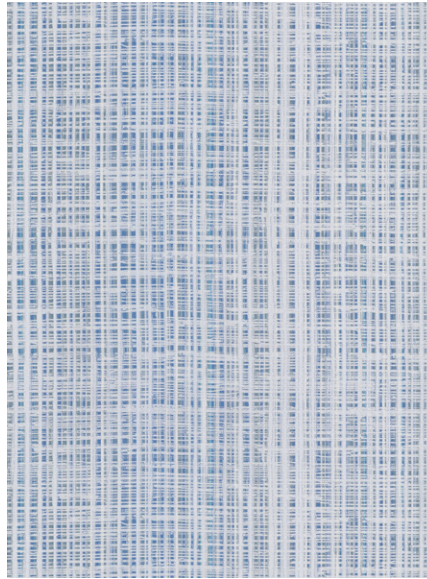
Approx. Repeat: 24.375 in/61.91 cm H, 22.25 in/56.52 cm V

Pattern is shown railroaded at approximately 75% scale

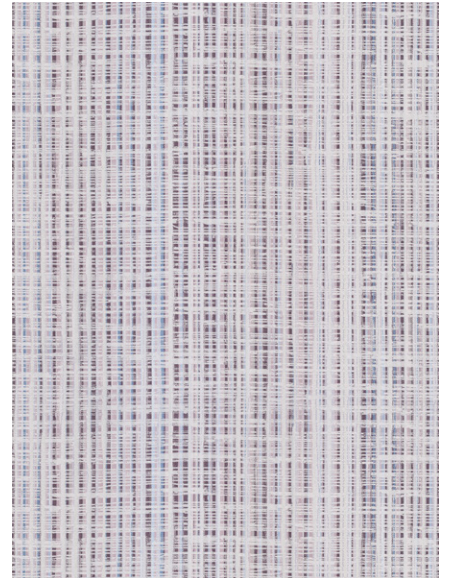
TRANQUILITY



PC19-003 Meadow



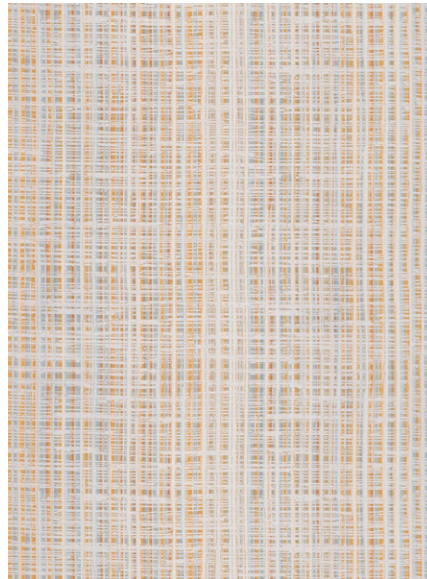
PC19-004 Lake



PC19-005 Heather



PC19-007 Stone



PC19-009 Cinnamon

TECHNICAL INFORMATION

Content: 54% FR Polyester, 46% Post-Consumer Recycled Polyester (23% from SEAQUAL® YARN)

Weight: 10.08 oz./linear yard / 312.51 g/lm

Finish: None

Width: 72 inches / 183 cm

Approx. Repeat: 24.375 in/61.91 cm H, 22.25 in/56.52 cm V

Directional: Yes

Shown Railroaded: Yes

FLAMMABILITY

NFPA 701 Test Method 1



These fabrics meet or exceed these ACT performance guidelines.
Certification Marks owned by ACT

REDUCED ENVIRONMENTAL IMPACT

This product is GREENGUARD Gold Certified for low chemical and particle emissions to UL standard UL 2818 and may contribute to LEED certification. For complete information visit mayerfabrics.com.

No FR Additives No Antimicrobial/Antibacterial Additives PFAS Free

CARE AND CLEANING INFORMATION

Launder: Machine wash to 160° F, tumble dry at 140° F, remove promptly.

WS: Water/Solvent

BC: Bleach Cleanable –

1 part bleach, 9 parts water = 10% bleach, 90% water solution.

ADDITIONAL INFORMATION

Custom Colors: All patterns can be custom colored. Minimum yardage applies.
Warranty: Please refer to the Mayer website for warranty information by pattern.
Digital Swatch Card Color Matching: Due to color variations on different monitors and color printers, actual swatch colors may vary slightly. Please request a memo sample from Mayer Fabrics to ensure proper color representation.
Complete and current product information available at mayerfabrics.com.

MAYER FABRICS



PC19CD ©2024 50324

T 800.428.4415 mayerfabrics.com
500 S. Kitley Ave. Indianapolis, IN 46219