

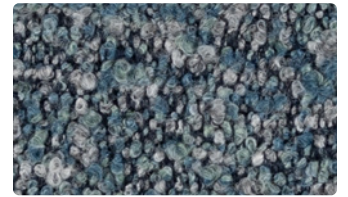
UTOPIA



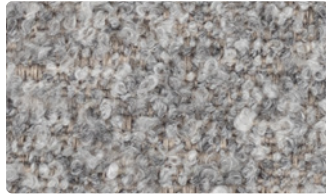
473-007
Dove



473-017
Oats



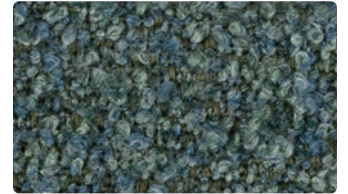
473-024
Capri



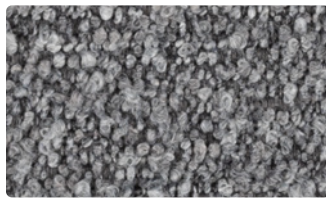
473-016
Fog



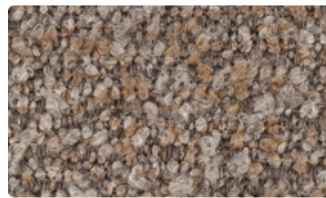
473-027
Driftwood



473-003
Sprout



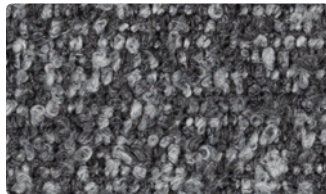
473-026
Smoke



473-037
Fossil



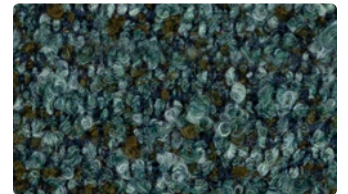
473-034
Rainstorm



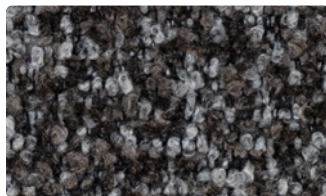
473-036
Carbon



473-002
Sundial



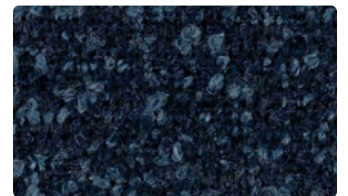
473-013
Spruce



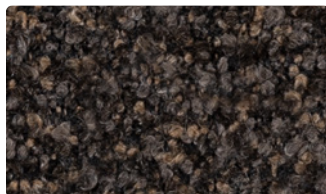
473-046
Cinder



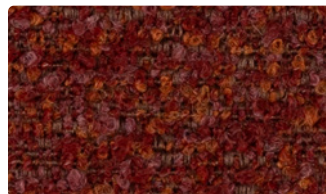
473-009
Autumn



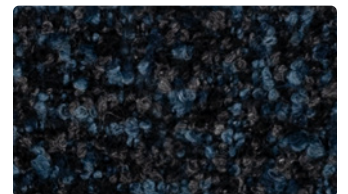
473-004
Twilight



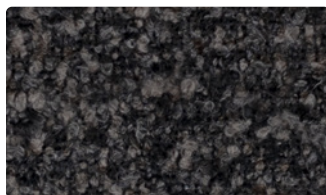
473-000
Sable



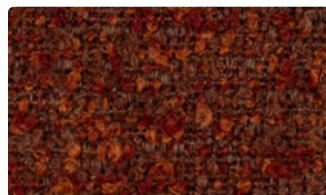
473-001
Flare



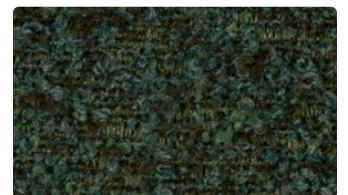
473-014
Midnight



473-006
Obsidian



473-019
Russet



473-023
Turf

Upholstery
88% Polyester, 7% Acrylic,
3% Polyurethane, 2% Silicone
54 inches / 137 cm
Exceeds 100,000 Double Rubs
Supreen (Silicone) - PFAS Free
GREENGUARD Gold Certified

UTOPIA

TECHNICAL INFORMATION

Application: Upholstery

Content: 88% Polyester, 7% Acrylic, 3% Polyurethane, 2% Silicone

Backing: Fluid Barrier (Supreen) Polyurethane

Weight: 24.5 oz./linear yard / 759.58 g/lm

Width: 54 inches / 137 cm

Finish: Supreen (Silicone) - PFAS Free

Approx. Repeat: None

Directional: Yes

Shown Railroaded: No

PERFORMANCE

Abrasion: Exceeds 100,000 Double Rubs
(Wyzenbeek/Cotton Duck)

Abrasion test results exceeding ACT Performance Guidelines are not an indicator of product lifespan. Multiple factors affect durability and appearance retention.

Crocking: Dry: Grade 4 min. / Wet: Grade 4 min.

Colorfastness to Light AATCC 16, Option 3: Grade 5 at 40 hours

FLAMMABILITY

California Technical Bulletin 117-2013
NFPA 260/UFAC Class 1

REDUCED ENVIRONMENTAL IMPACT

This product is GREENGUARD Gold Certified for low chemical and particle emissions to UL standard UL 2818 and may contribute to LEED certification. For complete information visit mayerfabrics.com.

No FR Additives No Antimicrobials/Antibacterials PFAS Free

CLEANING INFORMATION

WS: Water/Solvent Cleaner

BC: Bleach Cleanable –
1 part bleach, 9 parts water = 10% bleach, 90% water solution.

DYE TRANSFER DISCLAIMER

Certain clothing and accessory dyes (such as those used on denim jeans) may migrate to lighter colors. This phenomenon is increased by humidity and temperature and is irreversible. Mayer Fabrics will not assume responsibility for dye transfer caused by external contaminants. Please check compatibility when using this product in combination with painted or varnished surfaces.

ADDITIONAL INFORMATION

Custom Colors: All patterns can be custom colored. Minimum yardage applies.
Warranty: Please refer to the Mayer website for warranty information by pattern.
Digital Swatch Card Color Matching: Due to color variations on different monitors and color printers, actual swatch colors may vary slightly. Please request a memo sample from Mayer Fabrics to ensure proper color representation.
Complete and current product information available at mayerfabrics.com.



MAYERFABRICS



473CD ©2023 51123

T 800.428.4415 mayerfabrics.com
500 S. Kitley Ave. Indianapolis, IN 46219